

Telegrams: HEARD BROTHERS.

Telephone: BIDEFORD 70.

## HEARD BROTHERS, LTD.

WESTCOMBE WORKS  
AND BROAD QUAY. BIDEFORD

The Principal & Largest  
**Motor Engineering Works**  
in North Devon

Morris & Sunbeam Distributors for N. Devon.

M.G. Sports Car Distributors for Devon, Cornwall,  
and N.W. Somerset.

Every make of Car supplied and everything for it.

Officially appointed by the R.A.C. and A.A.  
and Principal Insurance Companies.

Bideford Gazette, Ltd., Printers.



**KINGSLEY'S COUNTRY**  
Bideford, Westward Ho!  
& District.

*It's Quicker by Rail*  
**Cheap Fares by Express  
 Trains to  
 BIDEFORD**

from LONDON (Waterloo) Daily.  
 Corridor Restaurant-Car Train. Seats Reserved.

**CHEAP FARES FROM LONDON**

**Week-end Tickets**

(Friday—Tuesday)

1st Class

**55/-**

3rd Class

**33/-**

**Holiday Tickets**

On various days during the Summer.

Return Fare

**33/-**

Obtain Pamphlets at S.R. Stations.

*When on holiday*

**See the District!**

*by taking advantage of the many Cheap Day  
 Tickets issued from BIDEFORD by numerous  
 trains daily, or by taking a*

**7-DAY SEASON TICKET**

costing **10/6** (Children under 14, half-fare), covering  
 Barnstaple, Ilfracombe and the beautiful Lynton and  
 Barnstaple Line. This ticket is obtainable on demand  
 any day during the summer at any station in the area  
 shown, and is available for 7 days, including  
 date of issue.

Travel **WHEN, WHERE and AS OFTEN** as you  
 like within the area shown

**JUST THE TICKET for HOLIDAY TRAVEL!**

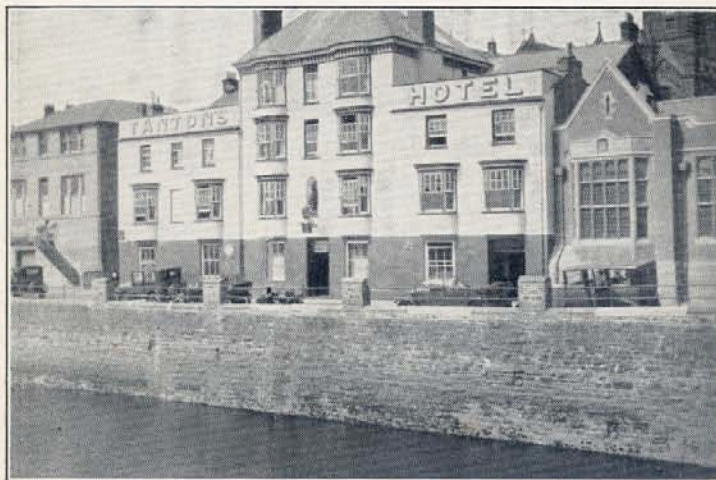
Full details of Train, Times, Cheap Tickets, etc., at any  
 local Station of the

**SOUTHERN RAILWAY**

**TANTON'S HOTEL,  
 BIDEFORD.**

Resident Proprietors - - A. W. E. & A. E. CROCKER

*The Principal Hotel*



Re-decorated throughout. Electric Light. Unrivalled position.  
 Overlooking Promenade, River and Old Bridge. The best centre  
 for North Devon, Kingsley and Tennyson Countries.

Fifteen Minutes from Royal North Devon Golf Links.

Famous <sup>for</sup> its First-class Cuisine and Comforts

TABLE D'HOTE.

Telephone 94

Moderate Tariff and

SEPARATE TABLES.

R.A.C. A.A. M.U.

*en pension* Terms.

# CLOVELLY

THE MOST POPULAR VILLAGE IN NORTH DEVON  
12 Miles from Bideford Station. Regular Bus Services.

## THE NEW INN HOTEL

(R.A.C. A.A. and M.U.)

Thoroughly Modernised. Baths.

Every Home Comfort. Good Cooking  
Tastefully Furnished Rooms  
Prompt Service

Motorists Touring the District specially Catered for

See description in Chapter xxiv. of "Set in Silver."

**OWN LOCK-UP GARAGE.**

*Hot & Cold Luncheons Daily 12 to 3.  
Afternoon Teas.*

Write Proprietor for Terms. Wires: "NEW INN, CLOVELLY."



The Royal Hotel, Bideford.

THE ROYAL HOTEL, at the further end of Bideford Bridge, is far older and more interesting than the somewhat conventional name of it would imply. It was built in 1688 by one of the wealthy Bideford Merchants. The noble oak staircase and the elaborately decorated ceiling of the Drawing-room survive to show us that this old merchant-prince did not consider that the best of everything was too good for him. The moulded plaster ceiling, designed in festoons of fruit, flowers and foliage in high relief, is one of the finest works of an old-time school of Italian



CHARLES KINGSLEY'S ROOM.

Resident Proprietors: MR. AND MRS. C. ADAMS.

craftsmen of this sort. It was in the drawing room of the 'Royal' that Charles Kingsley wrote part of 'Westward Ho!'

(Quotation from Historic and Picturesque Inns, By Chas. E. Harper).

Telephone :  
BIDEFORD 5

**"RIVORA," BIDEFORD. PRIVATE HOTEL**  
PHONE NO. 249.



**BOARD RESIDENCE. DINNER, BED & BREAKFAST**  
In beautifully high-situated house overlooking river. Splendid views  
Three minutes' walk from Railway Station. Within easy reach of Westward  
Ho! Golf Links. Bathrooms—hot and cold. Own Grounds and Tennis  
Lawn. Private Sitting Rooms if required. Good Cooking. Every con-  
venience. Terms moderate. Special Winter Terms. Own Garage.  
Electric Light. *Proprietress—MRS. E. A. CLARK*

**Upover Private Hotel**  
**Bideford**  
N. Devon

Extensive Views. Close to Station.

High Position.

Commanding River and Promenade.

Bath (h. and c.) Garage.

Telephone:  
BIDEFORD 140.

*Proprietress:*  
MISS PERKINS.

**BROMLEY'S CAFES**

LIMITED,

**CATERERS, BAKERS,**  
**and CONFECTIONERS**

*Numerous Awards for Excellence.*

**74 High Street, BIDEFORD**

(Next to G. P. O.)

THE FINEST RESTAURANT IN NORTH DEVON



**Also at BARNSTAPLE**

**THE STRAND BALLROOM**

(Opposite the Motor Park. Seating Accommodation for Five Hundred)

**and 105, HIGH STREET.**

Large Parties Catered for. Send for Menus and Price Lists.

Telephone: BIDEFORD 20. BARNSTAPLE 17.

Phones:—Northam 85 and Bideford 228

## H. W. GREENWOOD, M.P.S.

*Dispensing and Photographic Chemist*

THE PHARMACY, NORTHAM and  
21 HIGH ST., BIDEFORD

For up-to-date personal  
service and attention

*Kodak Film Developing  
and Printing  
Enlargements*

Roll Film  
Expert Developing  
and Printing

*Toilet Requisites*

SOUVENIRS, PERFUMES,  
BATHING CAPS, etc., etc.

LARGE STOCK OF MEDICINAL PREPARATIONS

**The Beach Pharmacy, Westward Ho!**

## HARPER'S *The Bookshop*

PHONE 173

11 High Street, Bideford

Hospital for  
FOUNTAIN  
PENS.

Picture  
Framing in the  
best  
mouldings

REMINGTON  
TYPEWRITER  
AGENTS

S.P.C.K. Depot

**Books.** The largest and most interesting stock of New and Second-hand volumes in North Devon. Books for Children a speciality.

**Stationery** In all sizes and shades. "Waldorf," "Hieratica Bond" etc. Address Dies engraved and paper stamped at London prices. Visiting Cards printed from plates.

**Leather Goods.** Ladies' Handbags, Attache Cases, Purses, Dressing Cases in great variety.

**Lending Library** Over 3,000 volumes. All the Latest Novels by the best Authors added as published. Terms very moderate.

Phone—Bideford 100

Telegrams—Marsh, Engineers, Bideford

## ERIC B. MARSH, Ltd.

*Agricultural, Motor & General Engineers*  
**Torridge Works, BIDEFORD**

All classes of Engines and Machinery supplied  
or repaired

LORRY OVERHAULS A SPECIALITY

Broken machine parts welded by Oxy-Acetylene  
process

HYDRAULIC TYRE PRESS AND MODERN MACHINE TOOLS

**Building Material  
Merchants**

*Workers in Granite  
Marble, Stone  
and Slate*

**Coal  
Merchants**

*Coke, Firewood, Culm  
and Anthracite Coals for Stoves  
and Greenhouses*

DELIVERY TO ANY PART

Telegrams—Baker 85 Bideford

Telephone No. 85

# THE BIDEFORD & NORTH DEVON GAZETTE

is the only family Weekly Newspaper for the Kingsley District.  
Excellent Advertising Medium. Every Tuesday.

Proprietors: BIDEFORD GAZETTE, LIMITED

*The Producers of this Guide*

GRENVILLE ST., BIDEFORD.

TELEPHONE No. - 78

## VISITORS

can buy the Souvenirs and Holiday Post Cards, Gifts, etc., they  
need at the Fancy and Stationery Departments of The Bideford  
Gazette, Ltd. Service, Value—and Large Stocks from which to select

---

## ALL ROADS LEAD TO HOLMAN, HAM & Co., Ltd.

### THE DEVON CHEMISTS

Manager: L. D. KNIGHT, M.P.S.

### 9, THE QUAY, BIDEFORD

Telephone: BIDEFORD 2. ESTABLISHED 1765.

FOR HIGH CLASS DISPENSING UNDER QUALIFIED  
SUPERVISION.

---

### All "Kodak" Supplies.

Expert Developing and Printing done on the Premises.

# KINGSLEY'S COUNTRY

---

## Official Guide

to

BIDEFORD - NORTHAM,  
WESTWARD HO!  
APPLEDORE and DISTRICT.

---

Published by the Bideford, Northam and District  
Joint Advertising Committee.

Publicity Officer: Mr. W. E. JENKINSON.

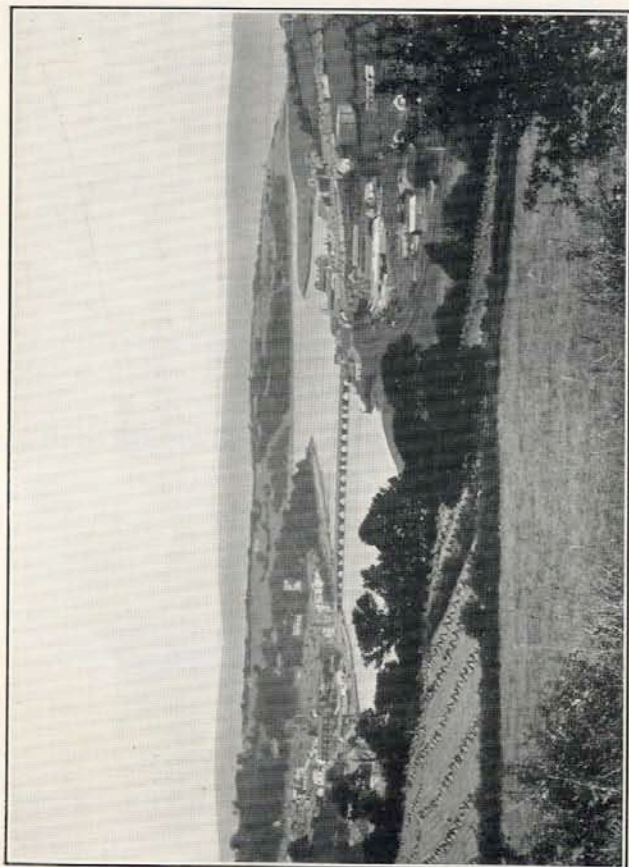
---

EDITED BY M. F. LEE

(with acknowledgement to previous editors of "Kingsley's Country")

---

Copyright retained by Bideford Gazette, Limited, Bideford,  
The Printers.



[F. E. Whiting

BIDEFORD FROM LITTLEHAM ROAD.

Photo]

## Contents

	PAGE
Introductory . . . . .	13
"Kingsley Country" Described . . . . .	15
Bideford . . . . .	17
Intending Residents . . . . .	18
Bideford Bridge . . . . .	24
Municipal Buildings, etc. . . . .	25
Parish Church . . . . .	26
Recreative . . . . .	29
Northam and Westward Ho ! . . . . .	33
Appledore and Instow . . . . .	39
Round the Kingsley District . . . . .	45
Books of Local Interest . . . . .	49
Kingsley's Bideford Associations . . . . .	49
The "Postman Poet" . . . . .	51
Notes on Local Ornithology, Botany and Geology . . . . .	51
Notes on Armada Guns . . . . .	53
Bideford Parish Church and John Strange . . . . .	53
List of Apartments . . . . .	56-57
Omnibus Service . . . . .	70

## Illustrations

	PAGE
Bideford, from the Littleham Road . . . . .	10
Bideford, 1740, from an oil painting . . . . .	12
Kingsley's Statue, the Quay . . . . .	13
Clovelly, from Hobby Drive . . . . .	14
On the Torridge . . . . .	18
Bideford, from an old print . . . . .	20
Bideford, To-day . . . . .	22
The Bridge Seal . . . . .	24
The Famous Long Bridge . . . . .	28
Northam . . . . .	32
Westward Ho ! . . . . .	34
Regatta Scene, Appledore . . . . .	38
Street Plan of Bideford . . . . .	Centre Pages
Map of North Devon . . . . .	" "
Instow . . . . .	40
Peaceful Torridge Scene . . . . .	44
Hartland Lighthouse . . . . .	44
High Street, Clovelly . . . . .	46
Sports Ground, Bideford, showing corner of Bowling Green in foreground . . . . .	48
Victoria Park, Bideford . . . . .	48
Lundy Island, showing Landing Slip and Rat Island . . . . .	50
Bideford—The Centre . . . . .	52
Armada Guns in Bideford Park . . . . .	55
High Street, Bideford . . . . .	61
The Call of Westward Ho ! . . . . .	63
Westward Ho !—The Bathing Pool . . . . .	63
Bideford's Spacious Promenade . . . . .	67
The Golf Links . . . . .	73
Sailing Race, with Appledore in background . . . . .	73
The New Rolle Bridge, Torrington . . . . .	77



From an oil painting in possession of  
the Parker Galleries, Berkeley Square,  
London.

"View in Devonshire. Bideford on the River Torridge, 1740. Francis Towne, d. 1810. Exhibited at the Royal Academy, 1780." (From an oil painting).

## Kingsley's Country

### Charles Kingsley.



Photo]

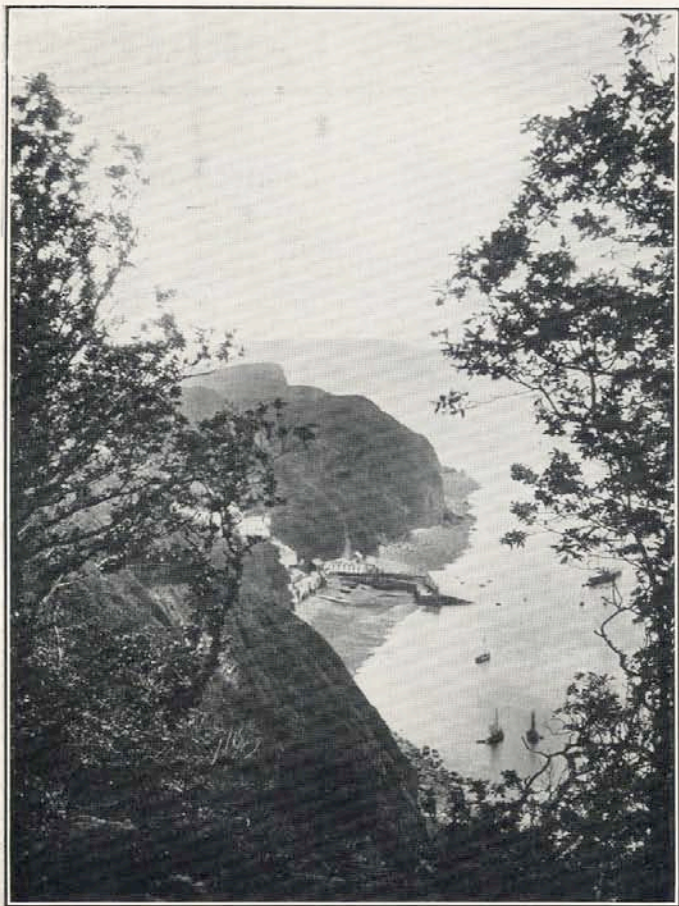
[Heys

BIDEFORD PROMENADE  
STATUE

Man of the tender heart, and subtle  
brain ;  
Hater of wrong ; dreamer of golden  
dreams ;  
'Tis fitting he should stand where  
Torridge gleams ;  
Where can be heard the moaning  
harbour-bar ;  
His steadfast gaze sweeping the ship-  
fringed quay,  
To where the long grey bridge sleeps  
lazily ;  
Around him, swelling uplands, stretch-  
ing far ;  
Above, the blue of the Italian sky.  
As red sailed fishing boats creep  
slowly by,  
Glad of their respite from the storm-  
tossed main,  
The fishers breathe his name ; on  
land and sea,  
All Devon men revere his memory.  
Hail ! Poet, Prophet, Preacher,  
Patriot—when  
Shall the world see so great a soul  
again ?  
ANON.

**B**IDEFORD, NORTHAM  
WESTWARD HO ! APPLE-  
DORE and district owe much  
to those who have written  
their praise and their song  
of this beautiful corner of the world, and to none  
are they more indebted than to the memory of  
*Charles Kingsley*, whose adventurous and descriptive  
"Westward Ho !" for all time made the Kingsley  
Country famous.





Photo] CLOVELLY FROM HOBBY DRIVE [Photochrom Co.

This Guide is written and compiled with the main idea of bringing this attractive district briefly before the eyes of those who are settling two rather important questions—"Where shall we spend our holidays?" or "Where can we find a really pleasant residential neighbourhood?" Essential information as well as descriptive and historical paragraphs is incorporated, and the photographs have been chosen with the hope of confronting the reader with the local atmosphere and personality of a town and district so famed.

"Kingsley Country" has been roughly described as the tract lying west and south-west of Bideford in North Devon. The winding Torridge stream with its wide sandy estuary, by the beautiful combs of Bideford Bay, circling round by

Portledge and Peppercombe to quaint Clovelly, the rugged heights of Harty Point, and the wild West Countree to the borders of Cornwall, these form the boundaries of the country over which Kingsley has cast the fascinating spell of his imagination. Even if it had not intrinsic beauty, which it possesses to the full, this district would be endeared to all manly men and womanly women as the training ground of the great Sir Richard Grenville, the Spaniards' terror, and of those brave youths who formed the immortal Brotherhood of the Rose, and as the home of stately Ladie Mary Grenville, and gentle Mrs. Leigh, of Burrough, and ill-fated Rose Salterne.

Thousands of visitors are attracted every year from at home and from abroad, large numbers to enjoy its many holiday amenities; others to

**Its Many Amenities.** explore the beautiful neighbourhood, full of potential housing sites, to decide on a permanent residence, and still others who love to walk the historic spots, seeing what there is to be seen, and even, perhaps, feeling some of the spirit expressed by Capern, the Postman-Poet of

more than local fame, who wrote :

“ Whene’er I tread old By-the-Ford,  
And conjure up the thought  
’Twas here a Grenville trod,  
And here a Raleigh wrought.”

Numerous books of fiction, biography, history, topography, poetry have been written of the charms and qualities of the neighbourhood which will reward the holiday reader who opens their pages. A list of those obtainable at the Bideford Free Library is given on page 49.

Realising modern needs, local public authorities and business men have kept pace with the times. On every

**Modern  
Needs.**

side can be seen the results of a well-conducted town and district. Public services, water supplies, gas, electricity, motor bus and train services, have all been brought to the highest efficiency. Up-to-date hotel and boarding house accommodation, and excellent shopping facilities also add to the attractiveness of the resort. Bideford and the Northam Urban District (which includes Westward Ho ! and Appledore) are very much intertwined geographically and in other ways, and together have a population of about 16,000 inhabitants.

Bideford has a climate both mild and bracing, and forms an ideal holiday centre for North Devon.

**Ideal  
Holiday  
Centre.**

Pleasantly situated, it has good roads linking up with every resort and beauty spot East, West or South. For the sportsman and the man of leisure there is everything to attract him. There is golf on the famous Westward Ho ! Links with the Royal North Devon Golf Club, fox-hunting with the Stevenstone Hounds, otter-hunting with the Cheriton hounds, and not far away stag-hunting with the Devon and Somerset Hounds. Good river and sea fishing is obtainable, as well as shooting ; while bowls, cricket, croquet and lawn tennis, swimming, sailing, boating, and other sports and pastimes are all amply catered for.

## Bideford.

“ All who have travelled through the delicious scenery of North Devon,” writes Kingsley, “ must

**The Little  
White Town**

needs know the little white town of Bideford, which slopes upwards from its broad tide-river, paved with yellow sands and many arched old bridge, where salmon wait for autumn floods, toward the pleasant upland on the west. Above the town the hills close in, cushioned with deep oak woods, through which juts here and there a crag of fern-fringed slate ; below they lower and open more and more in softly-rounded knolls and fertile expanses of hazy flats, rich salt marshes, and rolling sandhills, where Torridge joins her sister Taw, and both together flow quietly toward the broad surges of the Bar and the everlasting thunder of the long Atlantic swell. Pleasantly the old town stands there, beneath its soft Italian sky, fanned day and night by the fresh ocean breeze, which forbids alike the keen winter frosts and the fierce thunder heats of the midland. . . .”

Bideford’s character has not changed while keeping pace with the times. The same unique charm that

**Character  
Unchanged.**

captivated Kingsley and many another celebrity still remains. Many improvements and additions have been made to the town’s amenities. Its central position in the North Devon holiday district is becoming every year more widely recognised. It is easy of access from all parts of the country. In a few minutes over the five hours the Atlantic Coast express from Waterloo reaches Bideford Railway Station, and other routes connect as expeditiously. Special trains run from the North and Midlands, via Crewe, Birmingham, Shrewsbury, Bristol, Taunton and Exeter, and for motor tourists up-to-date and well-kept main roads

make the journey an all-too-short pleasure during the glorious summer months.

To the intending resident Bideford offers many advantages, for not only is it situated in the most delightful residential district, not so

**Intending Residents.**

many hours, by train, from London; but also it possesses an almost unlimited water supply, moderate rates with excellent amenities, and is served by gas and electric light companies. House-rents and rates are reasonably low in comparison with other places with far less public services.



Photo] ON THE TORRIDGE [C. Stuart

based on rateable value. There are few manufactures, but they include two collar factories and another for the production of fabric gloves. The population is approximately 10,000.

Bideford has excellent educational advantages. For girls there is the large and remarkably well-equipped boarding and day school, Edgehill College, which stands in beautiful grounds. There are also West Bank and Nilgala private schools and the Stella Maris Convent school. For boys there is the Bideford Grammar School and a Junior School at Westward Ho! The Municipal Art and Technical Schools, the Free Library and University Extension Society are other popular aids to greater education.

Bideford is a healthy residential town, standing high above the River Torridge on a subsoil of shale. The climate is mild and more bracing than

**Healthy Town.**

that of the South of the County. It has an excellent and constant water supply and is particularly free from epidemics of infectious disease. The death rate is low. Its equable temperature all the year round makes it a popular district for residents returning from the warmer zones in the East. As Kingsley writes, it has not the keen frosts and thunder heats of the Midlands, and residents and visitors are able to begin their summer pleasures earlier and end them later than in other parts of the country, East or North.

At Bideford can be found both excellent and reasonably-priced accommodation at well-situated hotels, boarding houses and private houses to suit all manner of needs. From this delightful centre, it is easy and pleasurable to visit the well-known North Devon, North Cornwall and North Somerset beauty spots by train, motor-coach or private car, and longer trips to Dartmoor and South Devon, with modern means of travel, are arranged daily.

For well over three centuries Bideford has been the-



BIDEFORD FROM AN-OLD-PRINT

market town for the district and the port for the entire

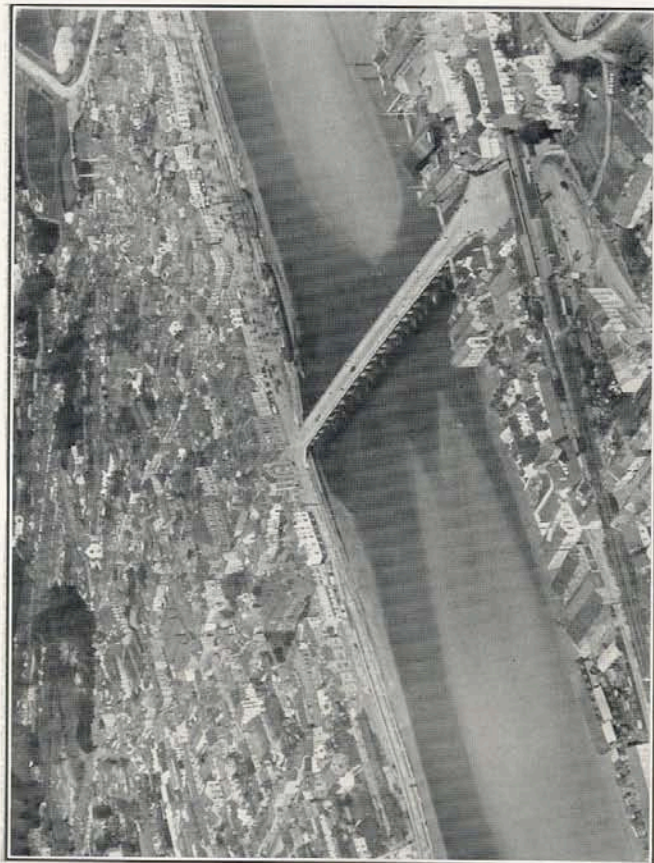
**Old Market Town.**

West Country, and has recently regained its ancient title of Port of Bideford, as is befitting a town of naval traditions. An ancient town, its origin is lost in the mists of antiquity. The name, Bideford, a contraction of By-de-ford is, of course, derived from its position by the ford across the Torridge which has from earliest times been much frequented by travellers between Cornwall and Somerset and the North. In the early centuries this "little white town," as it later became, entertained many unwelcome strangers, the marauding Danes, to wit, who paid several foraging visits to the Torridge estuary in the tenth century. In the reign of King John, Bideford had grown sufficiently to require a market, and a charter was granted to Sir Richard Granville, a forbear of the great Sir Richard, to hold a Market and Fair at Lady-day and Michaelmas. The fairs are now barely dates in the local calendar, their decay being brought about by the introduction of the now familiar cattle auctions. No striking part in national history was played until the years of Queen Elizabeth, when the town blossomed into splendour, mainly through the enterprise and interest of Sir Richard Grenville, of Azores fame, Vice-Admiral of England. He and John Strange, the hero of the plague visitation in 1645-6, are the most famous of Bideford's heroes of the past.

Sir Richard Grenville obtained a charter of incorporation for Bideford in 1574, John Salterne being the first Mayor. The Borough increased in importance, and was granted

**Charter of Incorporation.**

a more favourable charter in 1610. There was a large shipping trade with the Americas, with Holland, France and Spain, and a tradition lingers that the first consignments of tobacco were stored in a house East-the-Water. The fitting-out and owning of privateers was also a source of profit to the residents of the Borough during this adventurous period.



Photo]

BIDEFORD TO-DAY.

[R. L. Knight

Bideford did not play any great part in the Civil War between King and Parliament, although one of

**View  
from Fort.**

The first towns to declare for the Roundheads. The battlement with old guns, East-the-Water, known as Chudleigh Fort, from which a magnificent panoramic view of Bideford can be had, is the last relic of fortifications set up by Major-General Chudleigh, a Parliamentarian, to command the River Torridge and town, which was honourably surrendered in 1643 to the Royalists. Following the Great War, this fort and neighbouring ground were acquired by the town as a Memorial, being laid out as a park, with a rugged granite cross at the hill's summit.

At the close of the seventeenth century Bideford ranked as the third or fourth port of the kingdom. In

**Third Port  
in  
Kingdom.**

early years of the eighteenth century, French Privateers played such havoc with Bideford shipping, in what they named the "Golden Bay," that trade was diverted, and the port steadily declined. For more than half a century, however, until 1755, Bideford imported more tobacco than any other port in England except London, and in some years it even surpassed that port. The shipbuilding industry continued until fairly recent years; a short-lived steel shipbuilding industry occurring during the post-War boom.

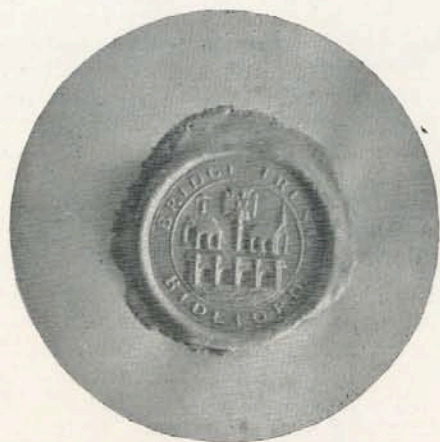
The old residential part of Bideford was High Street and Mill Street, and here lived the merchant adventurers who sent ships, half trading,

**Old  
Residential  
Part.**

half fighting, into the Spanish Main, and to the newly-founded colonies of North America. Bridgeland Street, as it is known to-day, did not exist until after 1684, although there is a popular myth that the Freemason's Hall, just below the Lavington Chapel, in this street, was the home of Rose Salterne. All-halland Street, interestingly enough, at one time formed the Quay, the Quay-front of to-day and Promenade having been extended into the river basin by degrees.

Many of the present buildings were built on the site of old inns. Of the old inns still remaining on the Quay is the Ship Inn, supposed to be on the site of the original "Ship," where the lovers of Rose Salterne dined together, one market day, and then formed the Brotherhood of the Rose. In the old days it had a gabled roof, and in course of time its titles have been "The Blue Anchor," "Newfoundland Inn," besides its present name.

"Every one who knows Bideford," says Kingsley, "cannot but know Bideford Bridge, for it is the very omphalos, cynosure and soul around which the town, as a body, has organised itself . . . being first an inspired bridge; a soul-saving bridge; an alms-giving bridge; an educational bridge; a sentient bridge;



THE BRIDGE SEAL

and last, but not least, a dinner-giving bridge." It has a length of 677 feet, and was built about six centuries ago. More than one attempt was made to

erect the bridge, but without success, until, according to ancient legend, Sir Richard Gurney, the parish priest at the time, was shown where to build in a dream. A remarkable fact is that its twenty-four arches are of different size, due, it is popularly believed, to some having been given by poor folk and others by the more wealthy. The present imposing appearance of the Bridge resulted from renovation and widening in 1925. In the early fourteenth century, angles were provided at each pillar into which any pedestrians might step for shelter from horses or other animals passing over. At the eastern end of the Bridge there was a chapel dedicated to St. Thomas the Martyr, and those who passed over it were wont to leave a gift for the maintenance of the structure, and in course of time the endowments yielded large revenues, which were administered by Bridge Feoffees or Bridge Trustees, who in the past have been famous for their dinners, not now held, and Kingsley wrote that the Bridge formerly kept the "best stocked cellar of wine in all Devon." Educational, charitable, and other grants are made from time to time as funds accumulate.

Visitors approaching Bideford for the first time from the East are at once charmed with the delightful setting of the town. The railway and

**Bideford's  
Delightful  
Setting.**

main road reach it up the banks of the broad, ribbon-like River Torridge, which is crossed here by the famous Long Bridge already referred to. On either side are wooded hills. On all the vantage-points around can be seen private residences, here nestling in a thickly wooded patch, and there standing out more boldly, commanding extensive views of the river, estuary and surrounding country-side. Crossing the old Bridge can be a thrill to those whose imagination will take some flight of fancy in history or tradition. Down the river will be seen the shipping at Appledore; and Instow's pleasure sailing boats; while in the opposite direction, towards Weare Giffard and Torrington the river curls away to hidden spots where boating picnics and good fishing can be obtained.

Facing one, at the west end of the Bridge, are the Municipal Buildings, Free Library and Museum, and the Bridge Buildings, and in between is the beginning of Bridge Street, a steep and narrow ascent that used to be the old coach route. The Free Library and Municipal Buildings were erected in 1906, and together form an imposing block of town buildings. Bideford adopted the Public Libraries Act in 1872, being one of the first towns in the west to rate itself for this extra-educational purpose, and it has now a very fine selection of books of fiction and reference, especially of those dealing with Bideford and district. In the Library also there are autographed letters of Kingsley, portraits of Capern, and the original of one of his poems, and many other relics of historic interest, including the most recent, a silver ship of the Armada period, given by Sir Basil E. Peto, Bt., M.P., to commemorate the restoration to Bideford of the title of "Port." Several old prints of local views and photographs of "old Bideford" are to be found in the same buildings, and in the museum there is an interesting collection of local "finds," including flint implements, old Armada chest, and specimens from the Westward Ho! submerged forest.

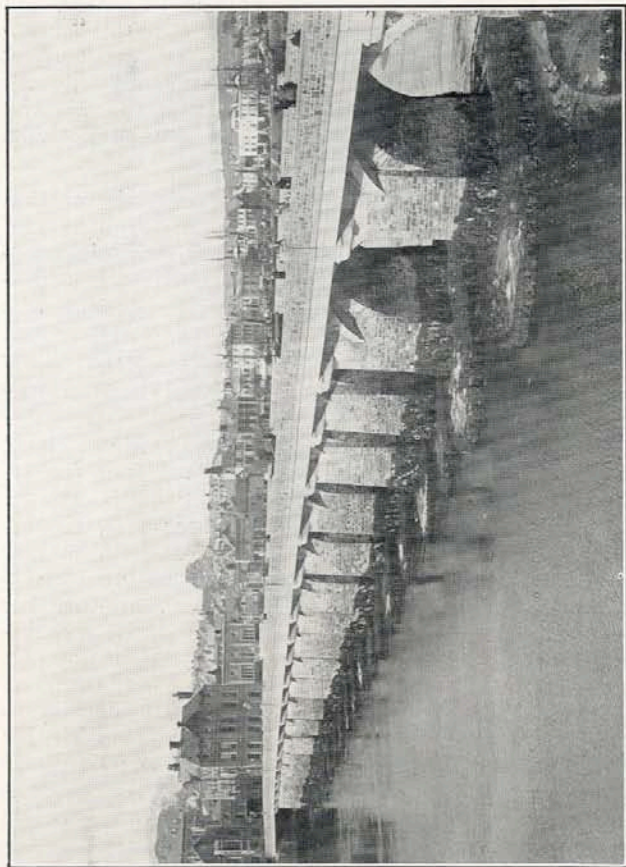
Another imposing building at the Bridge End is the Bridge Hall, which was erected in 1882 at a cost of £4,200, to replace the quaint old structure which did duty for so many generations, with its sombre chamber and school house adjoining. On the outside of the building the visitor will note an ancient sun-dial with its legend "Sol Tibi Signa Dabit," a reminder of the older building. Within a stone's throw is the \*Parish Church of St. Mary, built in 1864-5 upon the site of a much older edifice which retains the Norman tower, font and screen. An interesting account of its history is set out at length by a former Rector of the parish, the Rev. Preb. Roger Grenville, in his "History of Bideford." There are several monuments of much historical interest here, including

\* See Page 53.

those of the Grenvilles and the famous Sir Richard Grenville, of Azores fame, and John Strange, the hero of the Plague in 1666. At East-the-Water is St. Peter's Church, the Chapel-of-Ease. Other places of worship in the town include Lavington Chapel, in Bridgeland Street, the home of the early "Independents," whose first minister was the parish priest at the time; the Wesleyan Chapel, in Bridge Street; United Methodist Chapel, High Street; Baptist Chapel, Lower Gunstone; and the Roman Catholic Church of the Sacred Heart.

Many people are enchanted by their first impression of Bideford Quay and Promenade, which wide and imposing thoroughfare, with its tree-shaded walks, extends for a considerable distance until it becomes the River Bank Walk. The Mayor and Councillors of Bideford, being the Lords of the Manor, are owners of the Quay, and receive the wharfage dues thereof.

The first Lord of the Manor was Sir Richard Grenville, who, in the reign of William Rufus, was the most renowned for his valour, and who conquered Glamorganshire. This Sir Richard was descended from the Norman house of Clare, famous for their nobility and antiquity; many persons of great eminence have descended from them, viz., another Sir Richard, who in the reign of Queen Elizabeth maintained the greatest sea-fight ever fought by an Englishman. Having on board but 180 men, as Tennyson has so vividly written, he fought twenty-four hours with a host of Spanish ships, with his "Men of Bideford in Devon." Then Sir Theobald Grenville, who was a benefactor of the ancient Bridge. Sir Beville Grenville, who by his heroic action repelled the Parliamentary Forces at Lansdowne and thereby preserved the army of King Charles I., though he lost his own life in this action. His son and heir was Sir John Grenville who, following in his father's footsteps, and being very serviceable to King Charles II., was immediately created Earl of



[H. Ellis

THE FAMOUS LONG BRIDGE.

Photo]

Bath, Viscount Lansdowne and Baron of Bideford and Kilkhampton.

Along the picturesque River Bank, boating, swimming and the movement on the water and riversides retain one's interest. On the landward side is Victoria Park, including an extensive recreation ground. It is claimed that flowers are blooming here every day in the year. Around

the Bandstand are the old \*Armada Guns, about which there has been much controversy. These are undoubtedly eight of the finest specimens of the old guns

**Park and Armada Guns.**



**BIDEFORD'S ARMADA CHEST**

of the type used by the Spaniards during their projected invasion of Great Britain. The Armada Guns and the Treasure Chest are similar to those at Inverawe Castle, the residence of the Duke of Argyll, which were dredged up at Tobermory. Like many other historic relics, these guns have had a chequered career, and for many years served as mooring posts on Bideford Quay.

\* See Page 55.



To the West of Kingsley Statue, just outside the main entrance to the Park, a fine new roadway,

**Recreative.** Kingsley Road, leads away to Westward Ho! passing Bideford's fine Sports Ground, where there is every provision for tennis, hard and grass courts, golf putting, etc., and where are staged pageants, horse shows, fetes, besides football and cricket matches. Adjoining is the Bideford Bowling Club, whose annual open tournament in August always attracts a large entry. Not far away are the lawn tennis and croquet courts of the Torridge Vale Tennis Club, whose annual tournament is held about the same time, being followed later in the month by a juveniles' tournament.

Shopping has every attraction to offer at Bideford, for its traders are of the most enterprising variety, and uniformly handsome front windows and arcades surprise and please those who do not expect to find so completely up-to-date and well-stocked departments.

**Interesting Items.** Among the many interesting things to see in Bideford besides those already mentioned is the Kingsley oak-panelled room at the Royal Hotel, where the famous author is believed to have written part of "Westward Ho!" although most of it would probably have been written at North Down House, now a convent school, where he lived. The hotel is the "Colonial House" of 1688, but has been considerably re-built.

Every visitor "goes to market" in the spacious Pannier Market Hall, reached via High Street and Grenville Street. Here, on Tuesdays and Saturdays, the farmers' wives from the West Country attend their stalls and sell the produce—butter, cream and eggs—for which the district is justly famed. Under the same roof is also the Butcher's Row and Fish Market.

In Old Town, at the top of High Street, can be seen the cottages where lived the last of the Devon witches to be burned. Exactly opposite, interestingly enough, is now the Fire Station, containing an up-to-date motor-engine. In the premises now occupied by the Church Lads' Brigade, in Allhalland Street, formerly the

"Castle Inn," is where Sir Richard Granville is said to have resided after returning from his colonisation expedition to Virginia.

There is a Rotary Club which holds its luncheons every Thursday at Bromley's Café, High Street; three political clubs; Bideford Amateur Athletic Club, whose gymnasium and boathouse are near the River Bank in Kingsley Road, and close to it is its contemporary, Bideford Amateur Rowing Club; as well as numerous other social and recreative organisations.

For fishing in the Reservoirs, tickets can be obtained from the Town Clerk at 2s. 6d. per day, or 21s. for the season for Gammaton Reservoir, and 3s. 6d. per day at Jennetts Reservoir, or £2 2s. for the season. Trout fishing in the Torridge, 2s. 6d. per week (7s. 6d. per season), and salmon fishing, 7s. 6d. per day, £1 1s. per week (£2 2s. per season) per Mr. F. L. Pearse, Allhalland Street.

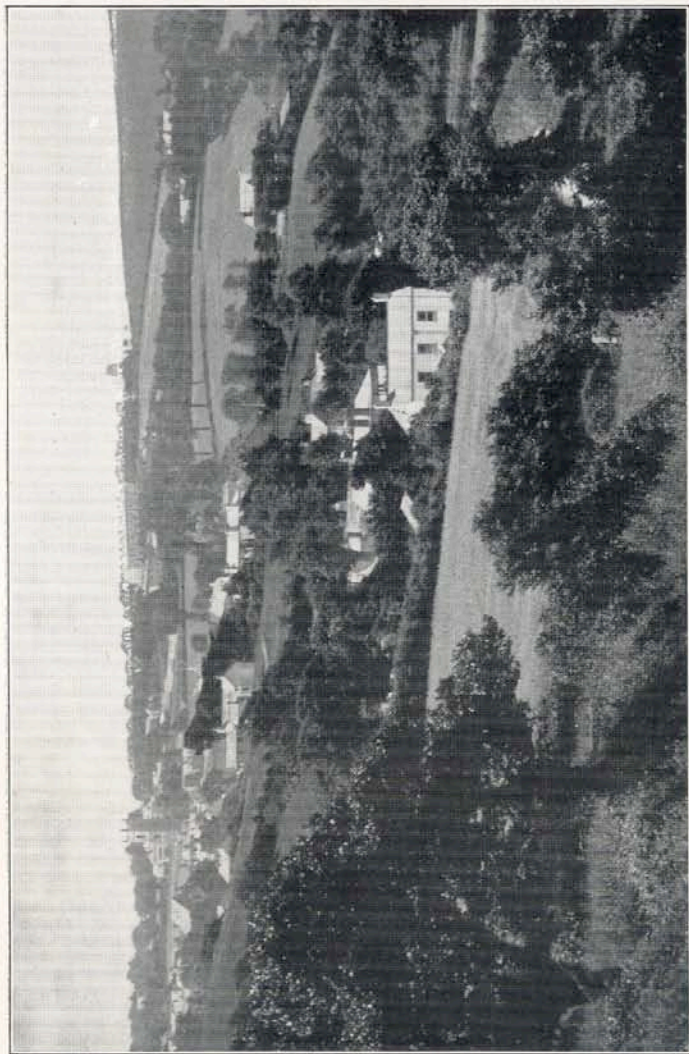
**Useful Sports Notes.** There is a Swimming Hut on the River Bank for ladies, and above and below the Bridge there are popular places for swimming, while surf and enclosed bathing can be enjoyed at Westward Ho!

Visitors can become temporary members of Torridge Vale Lawn Tennis Club for 2s. per day and 7s. 6d. per week on introduction; and can avail themselves of the facilities of Bideford Bowling Club at 6d. per game; 1s. per day; or 5s. per week. The latter club has also a tennis section.

In the Sports Ground there are public hard and grass tennis courts, a putting green, and football and cricket field, and within a stone's throw of that are the grass tennis courts and putting green of the Baptist and Wesleyan Recreation Club.

Golf can be had with the Royal North Devon Club, reached by 'bus via Northam, the terms for visitors being 5s. per day, 25s. per week, and £3 10s. per month.

Boats are for hire on River Bank. Bideford's annual Regatta and Sports are held at the beginning of September.



[C. Stuart

NORTHAM.

Photo]

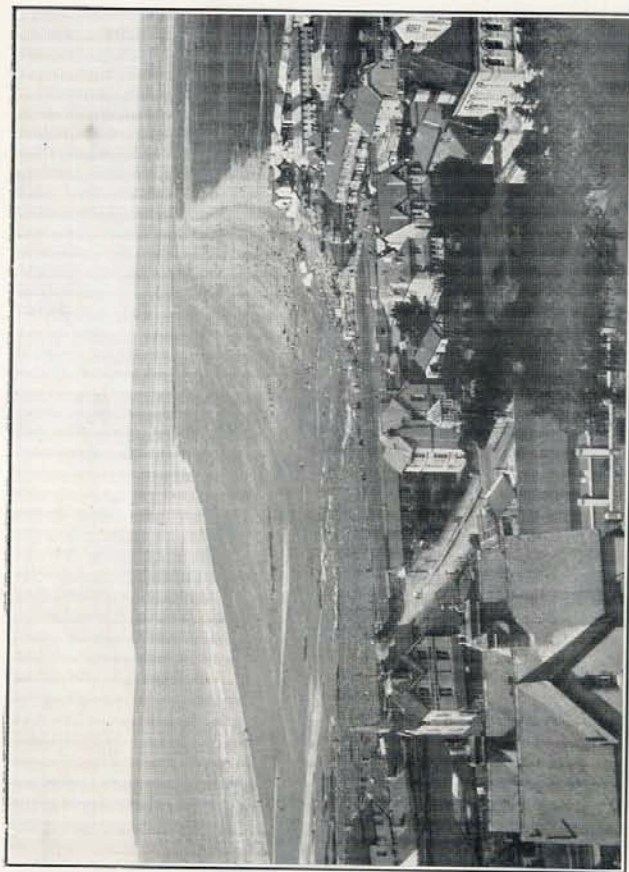
## Northam & Westward Ho!

A frequent motor-'bus service takes one the one-and-a-half miles from Bideford to Northam, the centre of

Northam Urban District, embracing **Northam—** Westward Ho! and Appledore and **The Centre.** about 4,500 acres of the most beautiful residential country in the West of England, bordered on one side by the picturesque Torridge, on another by the sea, and on a third principally by the Borough of Bideford. Statistics point to the healthy character of the district, as evidence of which is its death rate, shown to be well below the average for England and Wales. The bracing air and equable climate give fresh vigour and strength. Public services bear fair comparison to other and similar areas, and hotel and boarding house accommodation is of an excellent standard, and obtained at reasonable charges. The water supply is bounteous.

There are interesting historical haunts for the holiday-maker who probes into the character of the places he visits. Situated on a hill,

**Holiday** surrounded by well-wooded lands,  
**Haunts.** Northam's most prominent feature is its church tower, "the tall, gray, wind-swept tower," as Kingsley has described it. This stands 90 feet high, and from the summit extensive views of the countryside and seaboard can be obtained. At its foot was dug the grave for Salvation Yeo. "Perhaps the old man might like to look at the sea, and see the ships come in and out across the harbour bar" . . . thought Amyas. The church has a fine interior and organ, and well repays a visit. Not far from it is Burrough House, the home of Sir Amyas Leigh. There is a Congregational Chapel and also a Wesleyan Chapel. The War Memorial stands at the cross-roads at the Bideford entrance to the village.



Photo]

WESTWARD HO !

[Photochrom Co.

There are social clubs and other recreative organisations. The main road from Bideford divides here, going to the right for the "little white fishing village" of Appledore, and left, past the church, to Westward Ho! Bone Hill is a public place, where seats are provided and fine views can be had of the Northam Burrows and Bay. In the centre a flag-post arises from a cairn of pebbles inscribed to naval heroes, and said to be the burial place of Saxon and Dane after a great fight in the locality.

For the seaside and family holiday-maker, the amenities of Westward Ho! go a long way to filling the bill. This flourishing resort, only

**Westward  
Ho !  
Amenities.**

a scattered farm or two over half a century ago, has grown apace. Its popularity is accounted for by the magnificent stretch of sands, and its fame by the Pebbleridge, which keeps the sea back from Northam Burrows and the famous Golf Links. Surf bathing is the great attraction, for the huge Atlantic rollers come dashing in, covering the bather in spray and foam. For a change there is safe bathing in the Swimming Pool, a natural place in the rocks which has been adapted for this purpose. Owing to encroachments made by the sea, a protective sea wall has been constructed and a series of stone breakwaters erected, the latter offering tempting diving places when the tide is right for adventurous swimmers. Pleasant walks are those along the beach or Burrows to the Sandhills at the other extremity of the Pebbleridge, or Kipling Tors, or along the cliff tops from Westward Ho! to Cornborough and Abbotsham Cliffs, where the rocky shore provides prolific hunting ground for prawn, shrimp, crab and other small fry.

At Westward Ho! there is a golf-putting green on the Recreation Ground, overlooking the beach, and tennis courts and a fine cricket ground. Rudyard Kipling was educated at the old United Services College, Westward Ho! now converted into flats. The school gymnasium provides a hall for dances, entertainments and badminton. Readers of "Stalky and Co." will

Telephone No. 3

## F. N. BLACKALL & CO.

(F. N. BLACKALL)

*Automobile and Marine*  
**MOTOR ENGINEERS**

The Garage, Northam, N. Devon

*Repairs and Overhauls a Speciality*

STOCK DUNLOP, ENGLEBERT AND CLINCHER TYRES  
OFFICIAL REPAIRERS TO A.A. AND R.A.C. FORD SERVICE

*Agents for A.A. and M.U.  
General Accident Corporation, and other Insurance Cos.  
London Scottish, British and General Insurance Cos.*

Telephone 16 Northam

## H. A. & E. J. LITTLEJOHNS

*Coal Merchants, Hauliers*

**FORE STREET, NORTHAM**

*Best Lancashire, Yorkshire and Lidney Coals, Anthracites  
Coke and Logs, at Lowest Prices*

FAMILIES WAITED ON DAILY SOLICITING YOUR PATRONAGE  
DELIVERIES TO ALL PARTS OF THE DISTRICT

## H. TUCKER

*FAMILY BUTCHER and Purveyor of Finest English Meat  
only, at the lowest possible price*

Postal Address—Commons Farm, NORTHAM

Telephone—51 Northam

BIDEFORD MARKET ATTENDED

find themselves already familiar with Westward Ho!  
and neighbourhood.

Northam is a golfing village, and at the present  
time over eighty of its people are  
filling posts as golf professionals in  
different parts of the world. J. H.  
"Potwallopers" and Golf. Taylor, the famous ex-champion,  
hails from Northam and received his

training here. The explanation lies in the fact that  
"Potwallopers" are villagers of Northam who exercise  
rights of pasturage on the extensive acreage of common  
land, known as Northam Burrows—a peninsular,  
alluvial in origin—where there are the fine Golf Links  
of the Royal North Devon Golf Club, which was founded  
in 1864. "Providence," it has been stated, "obviously  
designed this for a golf links," and since the formation  
of the famous links, one of the first and finest seaside  
courses in England, there has been prosperity in the  
district. Visitors can play over the course on applica-  
tion to the Secretary of the Club (See page 58).

THE LEADING HOTEL IN THE BIDEFORD DISTRICT

## GOLDEN BAY HOTEL

**WESTWARD HO!**

Facing open sea and famous Golf Links Modern and really comfortable

HOT AND COLD WATER IN ALL BEDROOMS

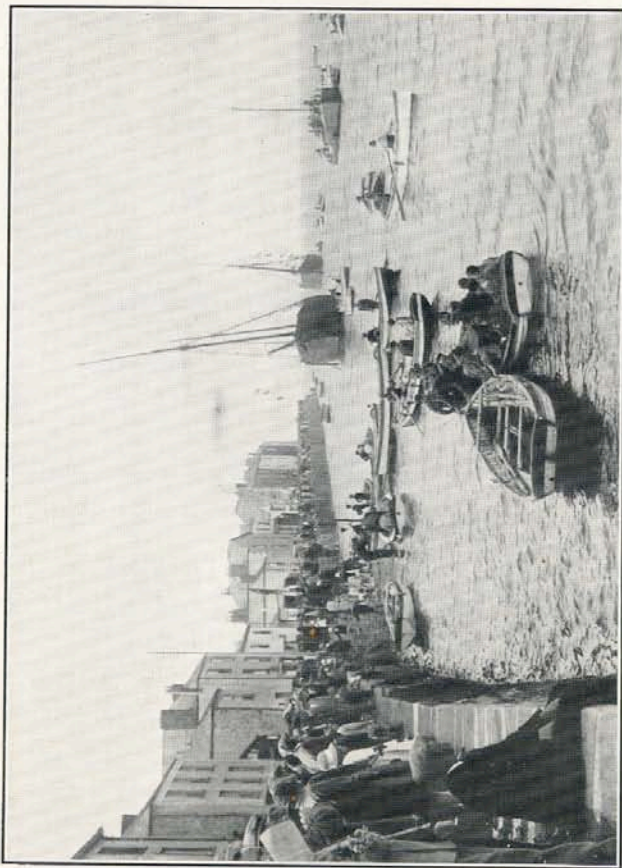
*Private Suites and Bedrooms with Bath and Toilet  
Generous Cuisine. Finest Wines. Electric Light.*

**FINE LAWN TENNIS COURTS FREE TO VISITORS.  
LARGE GARAGE AND 14 PRIVATE LOCK-UPS.**

*For Illustrated Tariff Booklet apply Manageress.*

Phone—114 Northam

Telegrams—"Royal, Westward Ho"



Photo]

REGATTA SCENE, APPLIEDORE

[H. Ellis

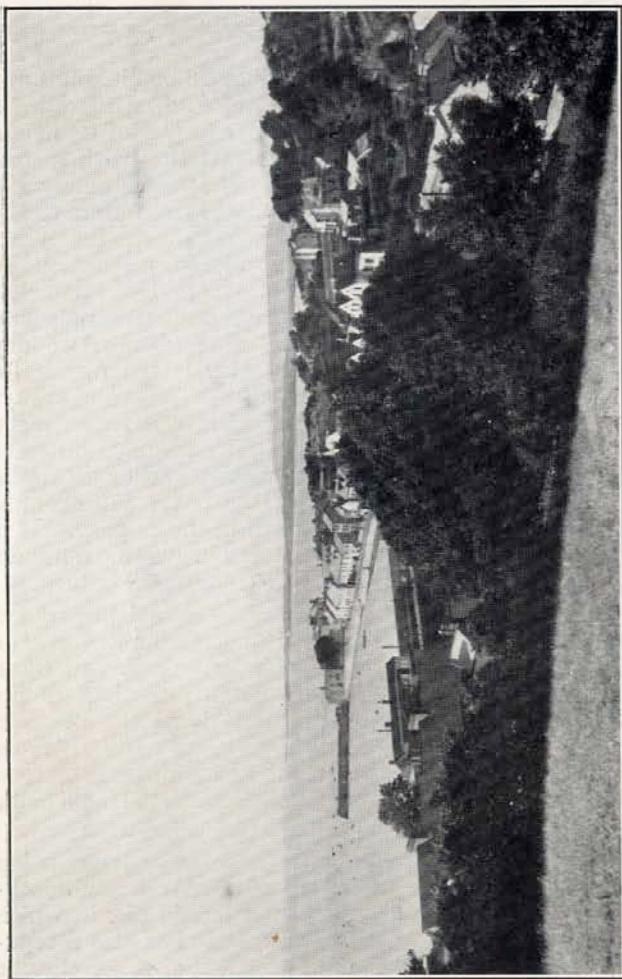
## Appledore & Instow

Appledore is a township of about 3,000 inhabitants, three and a half miles from Bideford, with quite a different character to any of its neighbours, and its association with Instow is that it faces the latter across the Torridge as it meets the waters of the Taw. Appledorians have for years

**Quaint and Picturesque.** lived by the sea, and no doubt will for generations to come, although the advent of steam has somewhat diverted shipping. Shipbuilding and repairing and kindred trades are carried on, there being two dry docks. Appledore's very character is the reason for its growing popularity with visitors. There is always something of interest: long and quaintly narrow streets, old-fashioned houses, and ship-lined quay, different craft coming in over the bar to drop anchor in Appledore "Pool"; blue-jerseyed watermen beckoning likely patrons for a row or a sail in the estuary. It is no wonder that artists are attracted in growing numbers —when there is a fresh picture at almost every turn.

Fine views are obtained from the neighbourhood of Chanter's Folly, a picturesque landmark on the edge of a large quarry built many years ago by a merchant named Chanter, to catch first sight of his vessels arriving at the Bar, and signal the news to Bideford. This can be reached via Pitt Hill. Across the river on a hill to the right of Instow can be seen Tapley House and the slender obelisk erected in memory of a Cleveland who lost his life in the Crimean war.

**A Healthy Quarter.** Appledore is a remarkably healthy quarter, being sheltered from the prevailing winds, West and South-West, and has a humid air, in which snow seldom lies. It has also a reputation as an excellent spot for chronic bronchitis patients. For water requirements it shares the supply of Northam, being part of the



[Sir Fretk. Renshawe

INSTOW

Photo]

Urban District of Northam. Among the places of interest\* are the Parish Church of St. Mary's, erected in 1838, and the up-to-date motor lifeboat and lifeboat house at the extreme limit of West Appledore. Places of worship include Baptist, Congregational, Wesleyan, Plymouth Brethren and Sailors' Mission.

The ferry takes one from Appledore to Instow, where, if the tide is in, a landing is made by the pier. Instow

#### **Instow's Pleasant Charms.**

is a pleasant residential resort full of charms for the artist and holiday-maker. It is three miles from Bideford, and can be reached by railway or motor-bus in a few minutes. From

here one obtains a fine, sweeping view of the confluence of Taw and Torridge and the surf-lined Bar outside, of Braunton lighthouse on the right, and beyond, on the skyline, the dim outline of Lundy Island; while to the left can be seen the distant coast-line by Clovelly and Gallantry Bower to Hartland Point, with the lighthouse at the foot. At evening the flashes of three lighthouses can be seen.

Instow's amenities as a residential and holiday centre include good gas, electricity, water and other public services; reasonably-priced hotel and boarding house accommodation, equable climate suitable for convalescents. For children there are some of the finest sands in Devon, and bathing is safe except when the tide is right out. The North Devon cricket ground is here, and during the season there is an attractive fixture list. Sailing is popular, and facilities are offered by the Taw and Torridge Sailing Club, and there is also a tennis and croquet club where visitors can play on introduction. From Appledore and Instow it is possible to get at least four hours' sailing each tide, and there is every opportunity for fishing.

\* Local history begins with the defeat of Hubba, the Dane, in his attack on Kenwith Castle. Watkins introduces the story: "In the year 879 the Danish invader Hubba, after having ravaged South Wales, embarked in thirty-three ships for Devonshire, and being landed on Northam Burrows, proceeded to attack the castle of Kenwith, in which was Odun (sic) Earl of Debon, with a small garrison—and after a bloody conquest the Danes were routed." An inscribed stone tablet, with the heading "Stop! stranger, stop!" at Bloody Corner, on the main road from Appledore to Northam, commemorates the event.

*Visitors to Northam and Westward Ho!*

CAN OBTAIN THE

**Finest Quality Groceries & Provisions**

BELOW LONDON PRICES AT

**BARRETT'S STORES**

**Cross Street, Northam**

**Regular Motor Deliveries to all parts of the district**

**W. S. M. BARRETT, Proprietor**

'Grams—Stent, Westward Ho!'

'Phone—Northam 129

**STENT'S GARAGE  
WESTWARD HO!**

*Large Private Lock-ups*      *MORRIS CAR AGENT*  
*Official Repairer to the Automobile Association*

**W. WATTS**

*Purveyor of Best English Meat only*  
**FORE STREET, NORTHAM**

*Meat delivered to Westward Ho! Bideford & District daily*

**UP-TO-DATE COLD STORAGE**

**Phone—Northam 27**

**“HOOPS INN,” HORNS CROSS, Nr. Bideford**  
N. Devon.

An old coaching  
and smuggling inn.

17 Bedrooms.  
Electric Light.

Every convenience  
Own farm produce

For Terms apply to  
Proprietor

LIEUT.-COM.  
A. R. C. DOUTON,  
R.D., R.N.R.  
(Retd.)



Hoops Inn near Bideford.

Telephone 25.

Telegrams: "DYMOND."

-:0:-

# R. DYMOND & SON

Auctioneers, Valuers,

HOUSE & ESTATE  
AGENTS

HOUSE LIST FREE.

Removals      Warehousing

*ESTIMATES FREE.*

**Shipping Agents to  
all parts.**

BRIDGELAND STREET,  
BIDEFORD

# Rowena Private Hotel

OLD ESTABLISHED

OVERLOOKING SEA AND GOLF LINKS

*Special Terms for Golfers*

Telephone—Northam 105

APPLY—PROPRIETRESS

## KING'S HEAD HOTEL FAMILY AND COMMERCIAL

Nearest to Famous Golf Course at  
Westward Ho!

### NORTHAM

FIRST-CLASS ACCOMMODATION.

CATERING AND SERVICE AT MODERATE TARIFF.

A A. LOCK-UP GARAGES.

Phone: NORTHAM 83.

T. W. D. SMITH, Proprietor.

## FERNDALE

*Board Residence  
and Apartments*

BED AND BREAKFAST

Facing Sea    Electric    H. & C.

Near Golf Links

Proprietor—Mrs. ALFORD

## Beacon Lights

*Board Residence  
and Apartments*

FACING SEA

Electric

H. & C.

Mrs. BERRY, Proprietress

# "Tanglin" Private Hotel

COMMANDING SITUATION FACING SEA

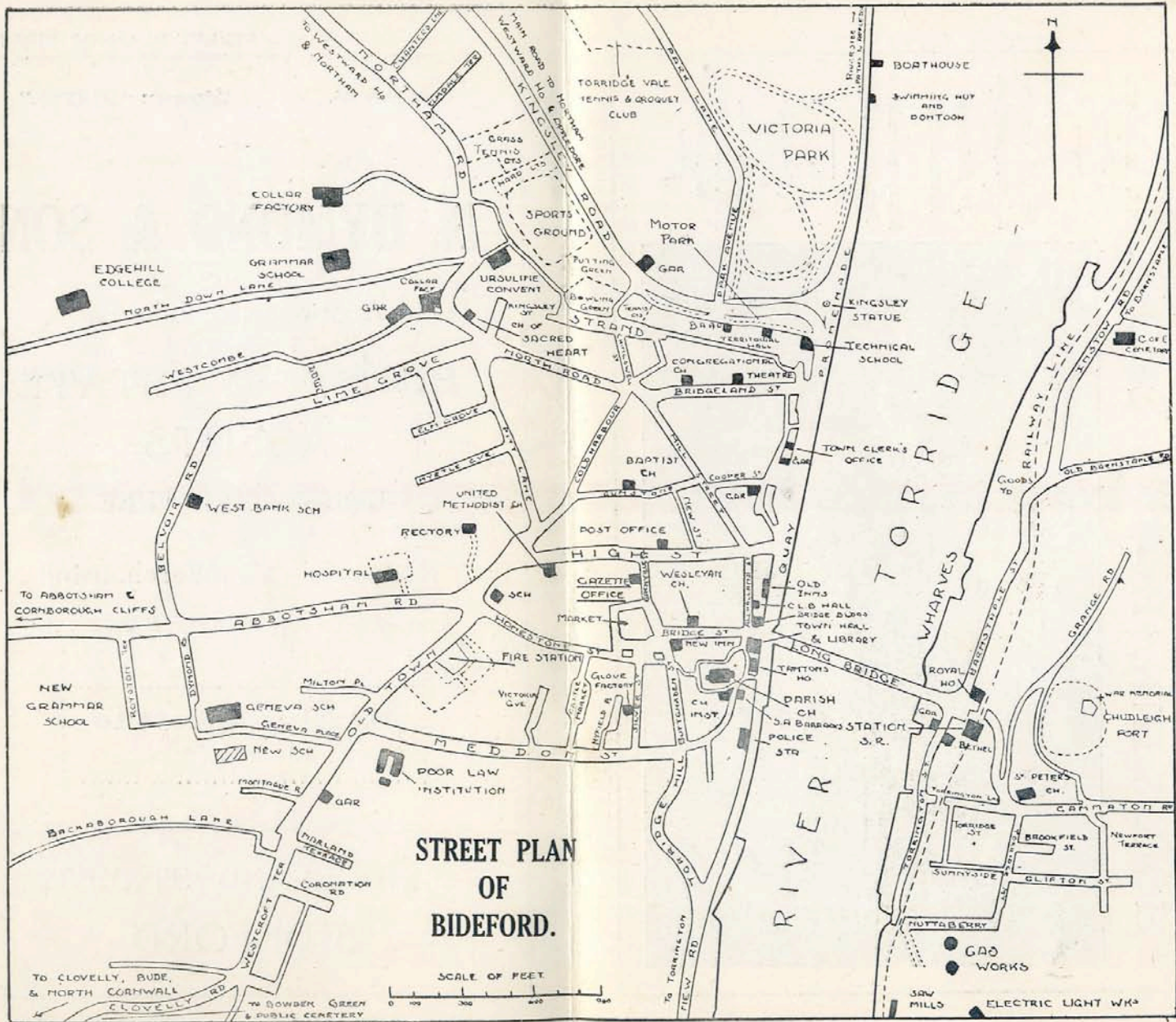
AMPLE ACCOMMODATION & NEAR LINKS & SEA

Constant Hot Water.

-:-

Apply Proprietress, Miss COLE.





OF BIDEFORD

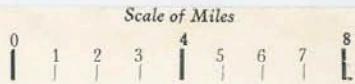
MOND."

SON

ATE

sing

ET,



Reproduced from the Ordnance Survey Map, with the sanction of the Controller H.M. Stationery Office.

Bideford Gazette, Ltd.

Telephone No. : 83

*The Old and Historic*

**“New Inn Hotel”**

Market Place,  
BIDEFORD



**First Class Family and Commercial**

*Pleasantly situated in the most central part of the Town commanding extensive views of the River Torridge and the surrounding country.*

Appointed by A.A. and R.A.C. Garage.

Resident Proprietors : Mr. and Mrs. F. G. SUMMERTON.

**CHAPLINS LTD.**

**CARRIERS  
AND  
CARTAGE CONTRACTORS  
AGENTS TO THE SOUTHERN RAILWAY**

---

**FURNITURE  
REMOVERS  
AND  
WAREHOUSEMEN**

---

**RAILWAY TICKETS ISSUED**

---

*Apply*

**Broad Quay,  
BIDEFORD**

TELEPHONE No 42

**Boutport Street,  
BARNSTAPLE**

TELEPHONE No. 48.



Photo]

**PEACEFUL TORRIDGE SCENE.**

[C. Stuart



Photo]

**HARTLAND LIGHTHOUSE.**

[F. E. Whiting

## Round the Kingsley District.

Radiating from Bideford are numerous places of interest brief mention of which can only be made here. Within a few miles of Bideford there are several pleasant excursions, including (1) along the riverside to Appledore, and return via Northam; (2) by train or 'bus to Instow, ferry to Appledore, walk to Westward Ho! over the Burrows, and either travel by 'bus or walk to Bideford via Buckleigh; (3) the old Barnstaple road to Eastleigh, turn off for Westleigh and return along the main road; (4) to Littleham via Ashridge, beautiful views of the river being obtained, and return via Yeo Vale and Torrington main road; (5) to the Reservoirs at Gammaton, East-the-Water; (6) to Jennetts Reservoir, branching off from the Torrington main road; (7, to Abbotsham or Cornborough Cliffs, getting a glimpse of Kenwith Castle, and make a circular tour via the coast to Westward Ho!; (8) by train to Torrington, and walk the seven miles back via Weare Giffard, enjoying to the full the supreme and quiescent beauty of the Torridge Valley; (9) take the main Clovelly road and branch off to the right after passing Abbotsham Cross for Cockington Cliffs, return same route or via coast to Westward Ho!; (10) by 'bus to Horns Cross and walk to Peppercombe, returning by 'bus or walking; (11) an easy walk to Kenwith Woods, then following the Westward Ho! road to the first cross-roads, returning by Silford Farm and Raleigh. 'Bus routes intersect most of the walks given above, enabling those who wish to cover part of the ground more quickly. For motorists there is a wide range of localities, and useful help in selecting short trips can be obtained from the road map in the centre of this Guide. Places of interest include:

**Frithelstock Priory**, the ruins of which are now being restored, is reached via Monkleigh. The Priory dates from about 1220.

**Great Torrington.**—7 miles. Noted for its charming landscape scenery. St. Michael's Church was blown up by gunpowder during the Civil War, the present edifice being erected in 1651. It is recorded that Cardinal Wolsey once held the living of Torrington. In the Norman and Plantagenet days, Torrington was of considerable importance as a market town, and even had the privilege of sending two members to the Parliaments of the three Edwards. Common lands surround the town, and from Castle Hill fine views are obtained. Torrington Castle has long ceased to exist.

**Buckland Brewer and Parkham.**—Six miles from Bideford, up the Yeo Vale road. Orleigh Court, built by a merchant of Bideford, was the birthplace of Capt. Speke, the discoverer of the source of the Nile. Buckland Brewer Church has a beautiful Norman porch, and the lofty tower is built of massive blocks, of granite. Capern, Bideford's postman poet, wrote many of his poems at Buckland Brewer, and Parkham is the reputed birthplace of the poet Gay.

(continued on page 47)



Photo]

HIGH STREET, CLOVELLY

[Photochrom Co.

**Hoops Inn.**—Known as the “half-way” house to Clovelly in the old coaching days, has been greatly developed of late years while maintaining its old character. It is a popular hotel.

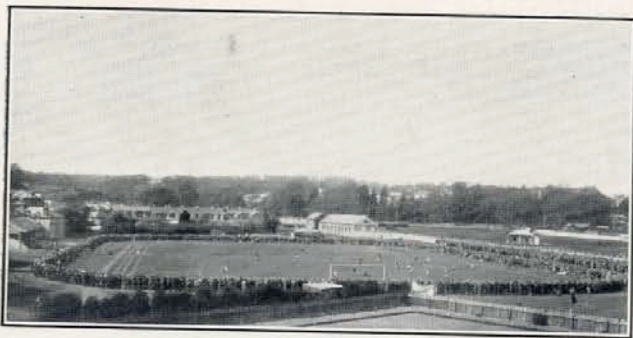
**Bucks Mill** is a hamlet about 9 miles from Bideford. At one time it was chiefly the home of a family named “Braund,” said to be the descendants of shipwrecked survivors of the Spanish Armada. It is an historical fact that Armada galleons were shipwrecked in the Bay. It is a pleasant retreat, with a string of white houses leading down to the beach. The approach from the main road is particularly delightful.

**Clovelly Dykes** are situated near the main road before turning off for Clovelly village. The extent of the ancient encampment can be discerned. There are three distinct encampments, each with its own vallum and ditch. The outer embankment encloses an area of about thirty acres, and from the top there is a delightful view.

**Clovelly.**—11 miles. This is the famous cliff village—quaint and picturesque; the only means of transport in its street of cobbles and steps being by donkey. The “New Inn Hotel” half-way down the main street, is very popular, and lower down an arch marks the site of the house of Salvation Yeo. That an old-world charm still clings to this quaint fishing village grown famous is due, above all, to the excellent taste of successive owners of Clovelly Court, and especially the present owner, Mrs. Christine Hamlyn. The roof of Clovelly Church dates from the days of Richard II. Many passengers from the Bristol Channel excursion steamers land at Clovelly in shore boats. Gallantry Bower and Mouth Mill should be visited, the coast-line being extremely wild and fascinating. The approach to Clovelly can be made on foot through the glorious woods of the Hobby Drive.

**Hartland Point** is about 6 miles from Clovelly, and **Hartland Quay** about two miles farther. The Point rises some 350 feet from the sea. The lighthouse on the lower jutting ledge was built in 1874. Hartland, or Harton parish, extends for 16,700 acres, and is perhaps the largest and wildest parish in the whole West Country. The Parish Church is dedicated to St. Nectan, and was connected with a college of secular canons, founded by Gytha wife of Earl Godwin. Out of this college grew Hartland Abbey.

**Lundy Island** is situated about  $11\frac{1}{4}$  miles from Hartland Point, 15 miles from Clovelly, and 23 miles from Instow. The motor-vessel “Lerina” takes passengers from the Torridge Estuary to the Island on certain days in the week, and the trip is well worth it on a calm day. The Island is  $3\frac{1}{2}$  miles long, with an average breadth of half a mile. It has a very chequered history, and the best account is contained in a monograph by J. R. Chanter, a copy of which can be seen at Bideford Library. Seats in the “Lerina” must be booked with Capt. Dark, Instow.



Photo]

**SPORTS GROUND, BIDEFORD**  
(with Corner of Bowling Green in Foreground)

[W. H. Puddicombe



Photo]

**VICTORIA PARK, BIDEFORD.**

[H. Ellis

## Books of Local Interest

OBTAINABLE AT BIDEFORD FREE LIBRARY

FICTION.—“Westward Ho!” (*C. Kingsley*); “Lorna Doone” (*R. D. Blackmore*); “Tarka, the Otter” and “The Pathway” (*H. Williamson*); “The Maid of Sker” (*R. D. Blackmore*); “Sir Bevil” (*A. C. Thynne*); “Laramys” (*G. Ford*); “Postle Farm” (*George Ford*); “Wilderness of Monkeys” (*Frederick Niven*); “Island of Providence” (*Frederick Niven*); “Asenath of the Ford” (*Rita*); “Stalky and Co.” (*Rudyard Kipling*); “Orange Street” (*S. P. B. Mais*); “Katerfelto” (*Whyte Melville*); “Set in Silver” (*C and A. N. Williamson*); “Ivor” (*G. H. Russell*); “The Mighty Atom” (*Marie Corelli*); “The Man of Genius” (*M. P. Willcocks*); “The Happy Elopement” (*E. H. Lacon Watson*); “The Golden Bay” (*J. Weare Giffard*); “Lure of Contraband” (*J. Weare Giffard*); “Riddle of the River” (*J. Weare Giffard*); “Shifting Sand” (*Alice Birkhead*); “The Last of the Grenvilles” (*Bennet Copplestone*); “Henry Elizabeth” (*Justin Huntly McCarthy*); “The Edge of Circumstance” (*E. Noble*); “The Man at Odds” (*Ernest Rhys*); “Two Years Ago” (*Charles Kingsley*); “Ravenshoe” (*Henry Kingsley*); “The Wages of Sin” (*Lucas Malet*); “A Message from the Sea” (*Charles Dickens*); “My Lady of Shadows” (*John Oxenham*); “My Devonshire Book” (*J. M. Harris*).

BIOGRAPHY AND HISTORY.—“Vicar of Morwenstow” (*S. Baring-Gould*); “Worthies of Devon” (*J. Prince*); “Devonshire Characters and Strange Events” (*S. Baring-Gould*); “Charles Kingsley’s Life and Letters (by his Wife)” (“History of Bideford” (*Watkins*); “History of Bideford” (*Roger Granville*); “Devonshire” (*D. Lyson*); “Survey of Devon” (*T. Risdon*); “The Portledge Papers” (edited by *R. J. Kerr and Ida Coffin Duncan*); “Stalky’s Reminiscences” (*L. C. Dunsterville*); “Literary Landmarks of Devon and Cornwall” (*R. T. Hopkins*).

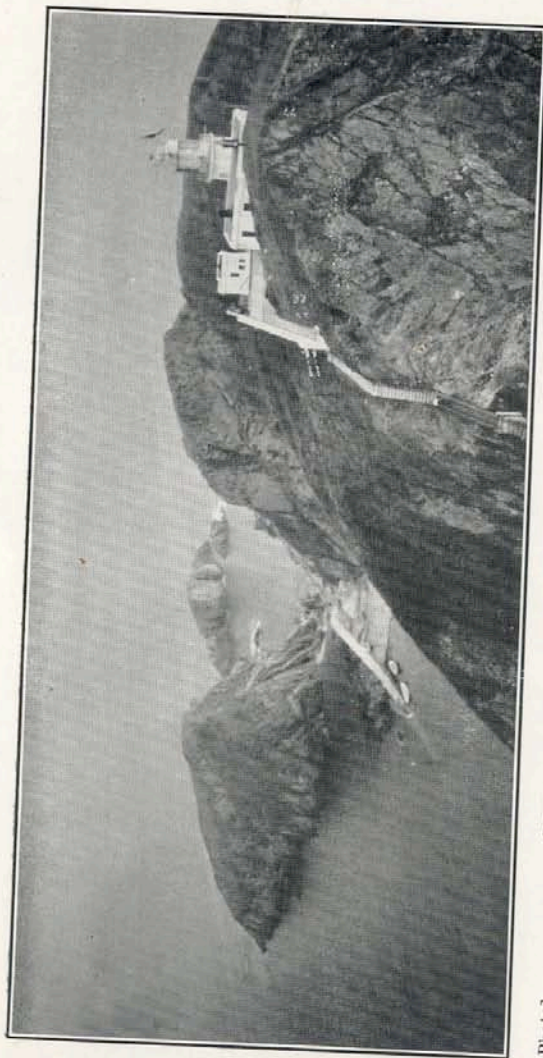
TOPOGRAPHY, ETC.—“Highways and By-ways in Devon and Cornwall” (*A. H. Norway*); “The North Devon Coast” (*C. G. Harper*); “North Devon” (*F. J. Snell*); “Lundy Island” (*J. R. Chanter*); “Lundy” (*L. R. W. Loyd*); “The Coasts of Devon and Lundy” (*J. Ll. W. Page*); “The History of Devonshire Scenery” (*A. W. Clayden*); “The Coast Scenery of North Devon” (*E. N. Arber*); “Unknown Devon” (*L. du Garde Peach*); “The Path through the Wood” (*J. L. May*).

POETRY.—Many volumes by Edward Capern; “The Revenge” (*Tennyson*); “The Shanty of the Nona” (*Hillaire Belloc*); “Songs and Verses” (*Vernon Boyle*).

### Charles Kingsley. Residence and Work at Bideford.

Charles Kingsley as a child, lived with his father, the Rector, at Clovelly (the Aberalva of “Two Years Ago”) and in 1854 he renewed his North Devon associations by coming to reside at Bideford. The winter and spring

(continued on page 51)



Photo]

LUNDY ISLAND SHOWING LANDING SLIP AND RAT ISLAND

[Sir Fredk. Renshawe

of that year were passed at Torquay, and Torbay gave him his first impression for "Westward Ho!" In June, on his wife's account, he took North Down House, where he wrote his famous "Westward Ho!"—now, by a strange irony of fate, in the occupation of a Roman Catholic sisterhood—which was published in January, 1855. Having little parish work at Bideford, he lectured on the Fine Arts, and held a drawing class for young men, which may be regarded as the nucleus of Bideford Science and Art School. He first endeavoured to establish a Government School of Art. This, however, failed. He then offered to teach a drawing-class, gratuitously. A meeting was held, and a room was hired at 28, Mill Street, the house of the Postman Poet, Edward Capern, who, although a married man and much older than the rest, was a most hard-working pupil.

#### Capern, the Postman Poet.

One of the most interesting figures connected with Bideford was Edward Capern, the Postman Poet, or (as he was often styled) the "Devonshire Burns." Capern (who came of a Huguenot stock) was born at Tiverton in 1819. At Bideford, in 1847, he was appointed a letter carrier between Bideford and Buckland Brewer, at a salary of 10s. 6d. per week. The Postman Poet was well known in the Midlands, both as a lecturer and as a reciter of his own poems. A portrait of Capern, presented to the town by his son, now hangs in the Bideford Free Library.

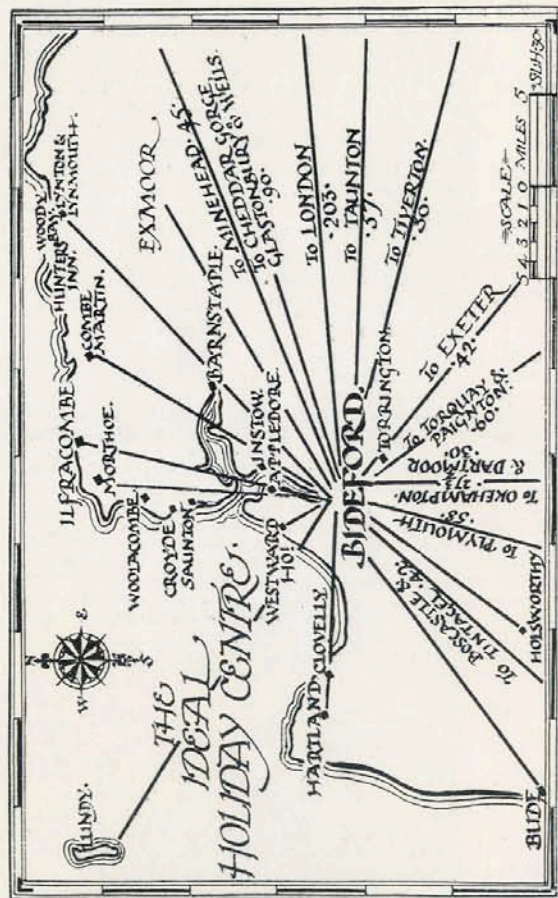
#### Ornithology of the District.

The feathered denizens of the neighbourhood are as varied as the scenery. Within a small area are moorlands and marshes, woods and meadows, streams and tidal rivers, exposing large mudflats at low water, belts of sandy seashore and precipitous cliffs, and, though one cannot lay down hard and fast rules for bird-life, each of these localities may claim its distinctive species.

The River Torridge, indeed, is a connecting link between the varied features of the scenery. No farther up than Torrington it has sufficient of the character of a mountain torrent to be the haunt of the Dipper and the Grey Wagtail; by Weare Giffard it runs between meadow-lands, bounded in places by high banks, where the Sand Martins bore their nesting tunnels. Lower down it winds among well-wooded hills—a stretch sacred to Herons and Kingfishers. Near Bideford it is joined by small tributaries which drain marshy valleys, where Coot and Moorhen, Water Rail, Wild Duck, Teal and Snipe are generally to be found; while the Estuary below Appledore provides ample feeding-ground for shore-loving birds. There are mudflats for Curlew, Redshank, Sandpiper and Dunlin; weed-covered rocks for the Oystercatcher (or Sea-pie as the bird is locally called); sandy stretches for the Ringed Plover; and fishing preserves for the Cormorants.

#### Of Botanical and Geographical Interest.

Botanists and geologists will find a great deal to interest them in the neighbourhood. The district abounds with happy hunting grounds for the genuine student. The "field geology" round Bideford is very perplexing, the strata being contorted and dislocated to an exceptional extent. There is hardly a rock-cutting, quarry or cliff-face but supplies ample evidence of this. There are culm deposits, and at Bideford a new works has been built for the production of Bideford Black, a paint used largely for ships. It is a scientific fact and not a mere fantastic ill-informed local myth, that the far-famed Pebbleridge at Westward Ho! is almost exclusively of rolled fragments from the cliffs round the Bay. The famous Raised Beaches and submerged forest at Westward Ho! are allied topics with a large literature of their own. Antiquarians will find in the district much that is of absorbing interest, especially in the carvings of the churches.



### Bideford's Medieval Bridge.

Regarding Bideford's famous Long Bridge, built about the year 1350, Prince, the chronicler of the "Worthies of Devon," wrote: "The famous Bridge of Bytheford for length and number of arches equalleth, if not excelleth, any other in England, a very stately piece and remarkable in many respects, to name a few:—First.—It standeth out of and far from any public road, in a corner of the county, and so intended chiefly for the conveniency of the Town. Secondly.—It is very long, consisting of twenty-four piers. It is so high that a bark of sixty or seventy tons may pass and repass under the arches and between the piers thereof. The erection of this famous Bridge was certainly due to the enterprise of Sir Theobald Granville, Knight Lord of the Land, the Goldeneyes (or Gurneys) and the Oketents, persons of great credit in these parts. Prior to the erection of this Bridge the only passage across the river was by boat."

The Bridge has been improved and widened on several occasions. In 1795 six arches were widened, and in 1807 four more; later in the same, year five more nearer the Western side were widened, leaving about half of the Bridge in its original state. In 1810 a contract was arranged for the whole of the Bridge to be overhauled, when the parapets were rebuilt with Penarth ashler stone improving the recesses, for the protection of the foot-passengers. It was in 1867 that the Bridge was widened and the recesses done away with, the whole of the expenses incurred in the various improvements being borne by the Bridge Peoffees. In 1925 the Bridge as now seen was again widened, and the approaches East and West of the river were greatly improved.

An old print of this ancient Bridge can be seen in the Public Library. See also pages 20, 22, 24, 25, and 28.

### Bideford: St. Mary the Virgin de Bydeford.

Originally a Saxon Church replaced by Norman, Bideford Parish Church was dedicated by Bishop Branscombe in the year 1259, the second year of his episcopate, the Church being then in the form of a cross. There remains, after the rebuilding of the Church in 1645, the Norman Tower, 70 feet high, together with the Norman font, a circular bowl divided into eight panels framed in cable twist; three panels facing East, filled with ornament; in centre a Maltese Cross, surrounded by a circular cable, to the left and interlaced Cross, on the right four divergent loops of three concentric cables. The arrangement of the ornament is unique.

Other points of interest: **Grenville Chantry** in south transept with tomb of founder, Sir Thomas Grenville, ob. 18th March, 1513; interesting example of medieval armour; arms of Grenville—3 horseman's rests, impaling Gilbert of Compton Marldon; on a chevron three roses. **Tower Screen**, composed of portions of the old bench ends, showing the Grenville and other bearings. **Monument of John Strange**, who died of the plague, 1646, after courageously accepting the mayoralty for the fourth time, when all others had fled. **Bells**—Ring of eight, five by Rudhall of Gloucester, 1722; one by Mears, of Whitechapel, 1810; two by Abbott, of Bideford, 1876. Recast May, 1929, by Messrs. Taylor, of Loughborough, one bell being provided by the Free Churches of the Borough. **Registers**, date from 1561:—"Raleigh, a Wiganditoian, baptised March 26th, 1587-8; buried April, 1589." (See Kingsley's "Westward Ho!") "The Lady Mary Grenvil, daughter unto the Right Honourable Sir John St. Leger, Knight, deceased, and wife to that famous warrior, Sir Richard Grenvil, Knight, also deceased, being in his lifetime the Spaniard's terror, was buried in the Grenvil isle in this Church the fifth date of November, 1623." In the Lady Chapel can be seen a Brass Tablet erected on the three hundredth



anniversary of the death of Sir Richard Grenville by his lineal descendant the late Roger Granville, a former Rector of Bideford.

### The North Devon Armada Fleet.

The story of "The Last Flight of the Revenge" is well known. As Bacon says, "memorable even beyond credit, and to the Height of some Heroicall Fable." It has been told in stately prose by Sir Walter Raleigh, and in immortal verse by Lord Tennyson; and Campbell's famous ode, "Ye Mariners of England," originally contained the lines:

"Where Granville, boast of freedom, fell,  
Your manly hearts shall glow."

The following are the five ships that sailed from Bideford: The "Dudley," "God Save Her," the "Tiger," "St. Leger," and "The Golden Hind"; all prepared at Bidiforde under the charge of Sir Richard Greenevil, who was born (probably at Bideford) in 1542 or 1543, for he was aged eight years at the death of his grandfather, Sir Richard Grenville.

Sir Richard Grenville for some years resided at Buckland Abbey, doing his duty as a Justice of the Peace. He was one of the first aldermen of his new borough of Bideford, granting the corporation "pir picage, stallage, and standings only concerning fayres and markets, and for the use of the Guildhall, prison, or other convenient purpose concerning the corporation, the use of a certain house in Bydeford commonly called the Chapel, being near the West part of the Bridge end there, and of certain land and ground in Bydeford aforesaid."

Phone—Bideford 117

Telegrams—Routley, Bideford

## FRANK E. ROUTLEY

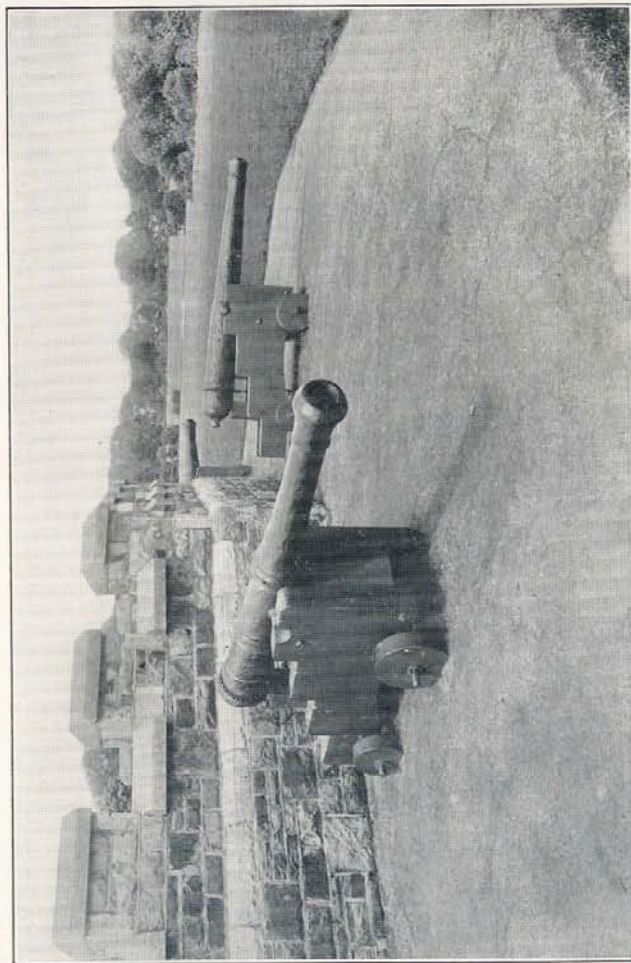
*Corn, Seed, Cake and  
Manure Merchant*

**BARNSTAPLE STREET, BIDEFORD**

*All kinds of FEEDING STUFFS for Cattle, Sheep,  
Pigs and Poultry*

**SEEDS OF THE HIGHEST PURITY AND GERMINATION**

*MANURES for all Crops. Prompt Delivery by Lorries*



ARMADA GUNS IN VICTORIA PARK. (See Pages 29).

### LIST OF APARTMENTS AND BOARDING HOUSES.

#### APPLEDORE.

INGLENOOK. Board Residence. Ample Accommodation. Ball Room. Electric. Modern Conveniences. Recommended. W. S. Stevens.

#### BIDEFORD.

Mrs. S. BURROW, Kilmaurs, Park Lane (h. and c.), facing River and Park, Apts., or Board Res.  
Mrs. H. BURROW, Hill Crest, Clovelly Rd., Apts. or Board Res. (h. and c.).  
Mrs. CLEVERDON, Mill St., Boarding House, terms mod., own dairy, home comforts.  
Mrs. CREELLY, 13a, Bridgeland St., Apts. or Board Res., bath (h. and c.), confectioner.  
Mrs. CLARK, Rivora, Board Residence, near railway, lawn tennis. See advt. page 7  
Mrs. ROWED, 2, Bridgeland St., Bed and Breakfast, Board Res., Apts., every comfort, central.  
Mrs. SHUTE, Torrildge View, Boarding House, bath (h. and c.), well recommended. Garage.

**SANDERS HOTEL** (unlicensed), Buttgarden St., terms moderate, good accommodation for motorists, well recommended.—Proprietress, Mrs. SANDERS.

#### CLOVELLY.

Miss F. FINCH, Burnstone Farm, Board Res., healthy sit., own dairy.  
Miss HEWITT, Ocean View, Board Res., well situated.

#### HORNS CROSS.

Lt.-Com. A. R. C. DOURON, Hoops Inn, halfway between Bideford and Clovelly. See advt. centre of book

#### WESTWARD HO !

Mrs. F. ANDREWS, 12, Eastbourne Ter., Apts. or Board Res., bath (h. and c.), close to sea and golf links.  
Mrs. R. KEES, 2, Eastbourne Ter., Westward Ho ! Board Residence or Apts., baths (h. and c.), own poultry and dairy, close to golf links. Established over 21 years.

Mrs. H. MOLLAND, 5, Fosceth Ter., Apts., overlooking sea, near golf links, bath (h. and c.).

ROWENA PRIVATE HOTEL. See page 48.

Miss WHITE, Cranford House, Apts. or Board Res., bath (h. and c.), one sitting room, two bedrooms.  
Miss MACKINNON, Victoria Ho., Pebbleridge Ter., Apts. or Bd. Res., 30 yards from bathing beach, and close to golf links. Bed and breakfast.

Mrs. SAUNDERS, "The Shears," Kingsley Terrace. Apartments or Board Residence (h. and c.) facing sea and golf links. Special winter terms.

**ROCKINGHAM, Westward Ho !** (main road), **VERY COMFORTABLE PRIVATE HOTEL.** Generous table. Electric light. Constant Hot Water. Close to Sea and Golf Links. Moderate terms. Miss FOLL. Tel.: Northam 183.

### TRUSCOTT'S LIBRARY, THE QUAY, BIDEFORD.

For Books, Stationery, Fancy Goods, Tobacco, Cigarettes. Newspapers delivered daily.  
Largest selection of Local Views in the district.  
**MAPS and GUIDES.**

**W. W. SING,**

BUILDER, GENERAL HOUSE JOINER AND UNDERTAKER  
ROSE BANK, WESTCOMBE, BIDEFORD.  
WORKSHOP AT WESTCOMBE. PHONE 274.

THE  
ROYAL NORTH DEVON  
GOLF CLUB

---

Excellent Games over one of the Finest Sea-side Championship Courses in the Country.

---

---

Visitors are invited to play, the terms being 5s. per day, 25s. per week, and £3 10s. per month.

---

Ladies, irrespective of handicap, are granted the same rights of starting and playing over the course as men, but no lady, unless playing with a man, can start between the hours of 10 and 10-30 a.m.

---

Application should be made to the Secretary, Major A. C. NEWTON KING, The Club House.

---

*Bideford's Largest Garage*

(Capacity 150 Cars)



*Agents for*

AUSTIN, SINGER, CHEVROLET  
ESSEX

*Distributors for North Devon for*

**Riley and Vauxhall Cars**

---

A. A. and R. A. C. OFFICIAL REPAIRERS  
OLDHAM BATTERY SERVICE STATION.

---

**Elliott and Sons,  
Kingsley Garage,  
BIDEFORD.**

Phone 132 ————— Grams "Elliott, Motors."

Phone: BIDEFORD 45.

Telegrams: PITT, 45 BIDEFORD

# WALTER J. PITT,

M.I.M.T.

Agent for FORD, HUMBER  
and TRIUMPH "Super Seven" CARS.

*Specially Appointed Service Agent for*



OFFICIAL REPAIRER FOR A.A. and R.A.C.

**BIDEFORD MOTOR WORKS, EAST-THE-WATER**

ANTIQUE FURNITURE — SILVER

# BISHOP. & BIDEFORD

PORCELAIN — WORKS OF ART

ADDRESS - 16, MARKET PLACE.

TELEPHONE 74 BIDEFORD.



Photo]

HIGH STREET, BIDEFORD

[H. Ellis

*The Best is always at*  
**WYATT'S STORES**  
**WESTWARD HO!**  
**GROCERIES AND PROVISIONS**  
 TELEPHONE 120

**WHITE & SON**  
 Nelson Rd., Westward Ho!  
 - BAKERS AND -  
 CONFECTIONERS  
 FAMILIES WAITED ON DAILY  
 APARTMENTS AND TEAS

**W. WOOD & SON**  
 GOLF LINKS ROAD  
 WESTWARD HO!  
*Holiday Visitors Catered for*  
 BOOKS AND POSTCARDS  
 FACING BEACH

Telephone No. Northam 37.  
**W. H. TRICKEY**  
 House Painter and Decorator  
*Sign Writer, Gilder, Grainer,  
 Glazier and Paperhanger*  
 ESTIMATES FREE  
**2 & 3 CROSS STREET**  
 NORTHAM, Devon.

**BATH HOUSE**  
**PRIVATE HOTEL**  
 Only Boarding House on Sea Front  
**EXCELLENT CUISINE**  
 Ample Garage Accommodation  
 TERMS 3 GUINEAS  
 PHONE NORTHAM 138

**G. BRAUND**  
*Baker & Confectioner*  
 THE STEAM BAKERY  
*(opposite the Church)*  
**The Square, NORTHAM**  
 Best Wheat Meal Bread & Turog  
 FAMILIES WAITED ON DAILY

**Bideford School of Music**  
**Shorthand & Typewriting**  
 E. G. LAYCOCK, L.R.A.M., F.C.T.S.  
 MISS HILDA LAYCOCK  
 Piano and Violin  
**25-26 BRIDGELAND STREET**  
**BIDEFORD**



Photo]

**THE CALL OF WESTWARD HO!**

[H. Ellis



Photo]

**WESTWARD HO!—THE BATHING POOL.**

[H. Ellis

FOR SPECIAL HOLIDAY EXPRESS TRAIN  
SERVICES arranged by the Southern Railway  
Company and the Great Western Railway Company,  
see folder issued by the Bideford, Northam and District  
Joint Advertising Committee.

---

“ EUGENE WAVE ” SPECIALISTS.

LADIES make your Appointment at

“ CUTCLIFFE'S ”

*Hair Specialists,*

14, HIGH STREET, BIDEFORD.

(First Floor) PHONE 226

---

RED HOUSE CAFÉ

ON RIVER FRONT

*Luncheons and Dainty Teas*

*- Morning Coffee, Ices, etc. -*

NOTED FOR HOME MADE CAKES, ETC.

*Adjoining Starting Place of the Bus Services.*

S. T. BURROW

*Practical Boot and Shoe Maker*

---

12 ALLHALLAND STREET, BIDEFORD

N. DEVON

---

*Agent for the famous “ Dartmoor,” “ Moccasin ” and  
“ Mascot ” Boots and Shoes for Men. “ Nil Simile,”  
“ Thelma ” and “ Mascot ” Shoes for Ladies and Girls,  
and the “ Startrite ” Shoes for Children*

---

Repairs by most competent workmen executed on the premises

---

WM. C. FRIENDSHIP

*Baker, Caterer and Confectioner*

THE POPULAR CAFE

Market Place, Bideford

Established Half-a-Century

Telephone 236

---

*Dinners, Wedding Breakfasts and Ball Suppers supplied  
All kinds of Fancy Cakes and Pastries*

---

Accommodation for Parties up to 300.

HOT AND COLD LUNCHEONS DAILY

DAINTY TEAS

ANY INFORMATION regarding the HOLIDAY and OTHER AMENITIES of BIDEFORD, NORTHAM, WESTWARD HO! and APPLEDORE will be readily supplied by the Publicity Officer, W. E. JENKINSON, MUNICIPAL BUILDINGS, BIDEFORD; who will also be pleased to receive advertisements for future issues of "KINGSLEY'S COUNTRY."

**G. ALFORD,**  
DECORATOR'S STORES,  
8, MEDDON STREET, BIDEFORD.

THE HOUSE FOR  
WALLPAPERS, PAINTS, DISTEMPERS, ETC.

Telegrams—Gibson, Westward Ho!

Telephone—24 Northam

**GOLF! GOLF! GOLF!**

**GOLFERS** when visiting Westward Ho! should call and inspect our large stock of GOLF CLUBS and GOLFING REQUISITES, etc., all at popular prices.

We use only the very best material in the manufacture of our well-known Clubs, which are made under our personal supervision.

Favourite Clubs carefully copied, satisfaction guaranteed.

All repairs promptly and neatly executed.

We stock all well-known brands of Golf Balls, also a large stock of Repainted Balls.

Golf Lessons by competent staff of Pros.

Large stock of Steel Shafted Clubs always in stock.

**C. GIBSON & SON**

ROYAL NORTH DEVON GOLF CLUB

WESTWARD HO! NORTH DEVON



[H. Ellis

BIDEFORD'S SPACIOUS PROMENADE

Photo]

ADVERTISE IN  
**THE NORTH DEVON HERALD**  
 PUBLISHED THURSDAYS, PRICE 2d.

The principal advertising medium for the District. Auctioneers, Estate and House Agents, Solicitors and those desiring to reach an extensive agricultural population will find the North Devon Herald incomparable  
**TARIFF CARD ON APPLICATION**

Published by **THE NORTH DEVON PRESS, LTD.**  
 106 High Street, Barnstaple, North Devon  
 Telegrams—"Herald," Barnstaple Phone—6 Barnstaple

**GEORGE LANG**  
 FOR  
**FURNITURE**

ACTUAL MAKER—COMPETITIVE PRICES.

"BUMPY" MATTRESSES RE-MADE

GRENVILLE STREET, BIDEFORD

**GEORGE BOYLE, LTD.**

GENERAL DRAPERS & OUTFITTERS

LADIES' & GENTLEMEN'S TAILORS

:: SPECIALISTS IN MEN'S WEAR ::

MOTOR CYCLES & CYCLE AGENTS

Agents for

JAEGER

AERTEX

BURBERRYS

**Ladies' Coats  
 Costumes**

**Jumpers and  
 Underwear**

Agents for all

leading makes of

MOTOR CYCLES.

Machines for hire.

**2, 3 & 4 HIGH STREET, BIDEFORD**

Phone BIDEFORD 14.

*When your Ship comes  
 Home*

**Y**OU have dreams of a life of ease; security for you and yours from the cares of the world. . . .

But why wait for the ship? Till it comes, enjoy the comforts that require no royal riches—the comforts that every home can have.

Radiant warmth in every room, beautiful lighting, gloriously hot baths at will, perfectly cooked meals. . . .

These are the comforts that gas brings to the home—by means of gas fires, gas lighting, gas cookers, gas water-heaters—all will help to make your home plain sailing, running as smoothly as the ship of your dreams.



*We offer free expert assistance in solving your heating, cooking, water-heating, lighting and power problems ... in making your home "a home of comfort" and in increasing the efficiency of your office, shop or factory. Write or Call to-day.*

**Bideford Gas & Coke Co., Ltd.**

OFFICES AND SHOWROOMS:

**8, THE QUAY, BIDEFORD.**

Telephone No. 89.





**REGULAR OMNIBUS SERVICES  
THROUGHOUT**

**NORTH DEVON AND CORNWALL**

ALSO

**MOTOR COACH TOURS**

TO

**ALL PLACES OF INTEREST IN  
THE WEST OF ENGLAND**

Full particulars can be obtained from:

**SOUTHERN NATIONAL OMNIBUS  
Co. Ltd.**

	<i>Phone No.</i>
BIDEFORD, The Quay - - -	193
BARNSTAPLE, The Strand - - -	246
BUDE, The Strand - - -	160
ILFRACOMBE, High Street - - -	96
NEWQUAY, East Street - - -	92
WESTWARD HO ! Sea Front - - -	123

*Northam*

*Travel*

**"SOUTHERN NATIONAL"**

**THE SOUTHERN NATIONAL OMNIBUS CO., LTD.**

Visitors and Residents will find BIDEFORD an ideal centre for touring and shopping, especially in view of the regular and frequent Omnibus Services operated by the "Southern National" throughout North Devon and Cornwall. Modern Omnibuses, ensuring comfort and safety run frequently from BIDEFORD to:

- |              |               |
|--------------|---------------|
| Appledore    | Lynton        |
| Barnstaple   | Morthoe       |
| Boseastle    | Northam       |
| Braunton     | Northmolton   |
| Bude         | Okehampton    |
| Camelford    | Padstow       |
| Clovelly     | Plymouth      |
| Combe Martin | Saunton       |
| Croyde Bay   | Southmolton   |
| Georgeham    | Tavistock     |
| Hartland     | Tintagel      |
| Ilfracombe   | Torrington    |
| Instow       | Westward Ho ! |
| Lee Bay      | Widemouth Bay |

Woolacombe, etc., etc.

Travel by



and make your journeys a pleasure.

Details of Omnibus Services and Motor Coach Tours can be had on application to:

**THE SOUTHERN NATIONAL OMNIBUS CO., Ltd.,**

**THE QUAY . . . BIDEFORD.**

Phone : Bideford 193.

Or Local Depots at Barnstaple, Bude, Ilfracombe and Newquay.

## R. A. FRAYNE

*High-Class Pork Butcher*

Specialities—PORK SAUSAGES, PIES, BRAWNS, Etc.

66 HIGH STREET, BIDEFORD

TELEPHONE NO. 198

## C. HOLD FAMILY BUTCHER

16 MILL STREET, BIDEFORD

SPECIALITIES—HOME MADE SAUSAGES,  
SALT SILVER SIDE, SWEETBREADS

HOTELS, INSTITUTIONS & LARGE FAMILIES  
CATERED FOR. BEST ENGLISH MEAT ONLY

HYGIENIC COLD STORAGE

PHONE 179

## CLEVERDON'S DAIRY

*THE RESTAURANT*

18 MILL STREET, BIDEFORD

DAIRY PRODUCE  
FRESH DAILY

DEVONSHIRE CREAM SENT BY POST  
TO ALL PARTS

ACCOMMODATION FOR TOURISTS.

## THE BUCKLEIGH LAUNDRY WESTWARD HO!

Telephone—Northam 112



Photo]

[Dr. A. E. Bedington

THE GOLF LINKS.



Photo]

[Sir Fredk. Renshawe

SAILING RACES WITH APPLIEDORE IN BACKGROUND.

FREDK. S. PENROSE,  
U.K.A.F.

TAILORING  
SPECIALIST  
TO



LADIES  
AND  
GENTLEMEN

16, BRIDGELAND STREET,  
BIDEFORD.

PHONE 184.

## VISITORS TO BIDEFORD

*Who are interested in ANTIQUE CHINA  
GLASS, FURNITURE, OLD PRINTS, etc.*

*are invited to inspect our stock at any  
time without any obligation to buy*

**G. HOPSON & SON**

*Complete House Furnishers*

**24 Mill Street, BIDEFORD**

*Established 1854*

*Phone 108*

# ROBERT & CO.

67 & 68 HIGH STREET,  
BIDEFORD

Dealers in  
Artistic Goods and Fabrics

SMALL FURNITURE. BOOKS. STATIONERY  
FURNISHING FABRICS, CURTAINS, Etc.,  
MADE TO ORDER.

THE  
**DEVON TRADING CO.**  
LTD.

*Timber, Slate and Cement  
.. Importers ..  
and General Merchants.*

**CLARENCE WHARVES, BIDEFORD**

TELEPHONE 105 BIDEFORD.

# H. F. ELLIOTT

*The Boys' & Men's*

*Shopping Centre*

Departments .

TAILORING, LADIES' and GENT'S HOSIERY  
BOYS' and MEN'S OUTFITTING

75 High Street, Bideford

Next Bromley's Cafe

Phone 281

## Morrison's Quayside Cafe

*When visiting BIDEFORD you  
cannot do better than to call at*

**MORRISON'S QUAYSIDE CAFE**

FOR

*Light Refreshments Hot and Cold Luncheons or Teas*

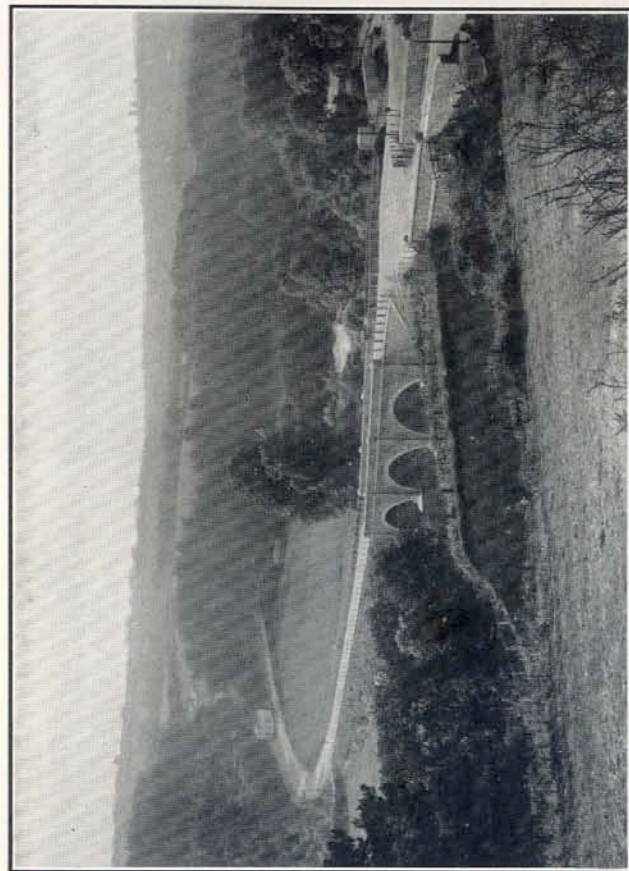
**NOTED HOUSE FOR PIES AND PASTRIES**

Ring up Bideford 147

Large or small Parties catered for

**BRIDGELAND STREET CAFE**

*(Close to the Kingsley Statue)*



[Sweetman & Son

THE NEW ROLLE BRIDGE, TORRINGTON

Photo]

Telephone No. 183

## R. A. BRAUND & CO.

(Partners—R. A. BRAUND and W. E. N. KIEVILL)

*Boot and Shoe Specialists*  
*Bespoke Work and Repairing*

Agents for "Lotus," "Queen," "K," "Delta," "Eective,"  
"Jaegar," "Norvic," etc., etc.

**FOR QUALITY AND SERVICE!**

**MILL STREET, BIDEFORD**  
and at NORTHAM

## IRONMONGERS

*Up-to-date Plumbers*

*Heating, Lighting*  
*and Sanitary*  
*Engineers*

**H. I. MEREDITH & SON**  
**18 HIGH STREET (Opposite The Post Office) BIDEFORD**



*Sports*  
*and Wireless Dealers*

Estimates Free      Satisfaction Guaranteed

Telegrams—Meredith, Bideford      Telephone—21

*Visit Great Torrington.*  
*North Devon's Beauty Spot.*

**I**F interested in flowers we invite you to inspect our Gardens at Weare Cross — on Bideford-Torrington Road, or our Nursery at School Lane, Torrington.

*We shall be delighted to show you round*

**W. SPARKS,**

**10, HIGH STREET BUS TERMINUS TORRINGTON.**

*For every Description of*  
*Reliable Footwear*

**J. SANGUINE & SON**

*The Boot Stores*

**GRENVILLE STREET, BIDEFORD**

*Repairs Promptly Executed*

# STELLA MARIS CONVENT

"LAKENHAM,"

NORTHAM

(Between Bideford and Westward Ho!)

## *High Class Residential School.*

Under the Patronage of His Lordship the Bishop of Plymouth and the direction of the Sisters of Charity of Jesus and Mary.

**T**HIS School has the advantage of being in the centre of a district of great scenic and historical attraction, and "Lakenham" holds a unique position for Health, standing in its own grounds of seven acres, on rising ground overlooking the Northam Burrows, Royal North Devon Golf Course and Westward Ho! Pupils have the full benefit of the pure air from the broad Atlantic Ocean and enjoy Sea Bathing during the Summer Term.

Sports:—Swimming, Riding, Tennis, Golf, etc. Tennis Courts and Playing Fields in grounds.

Hot and Cold (running) Water in bedrooms, electric light and perfect sanitation; it is heated by central heating as well as open fires.

A sound education is given upon the most modern lines and by a fully qualified staff, pupils being prepared for all University, Local, and R.A.M. Examinations.

### HOME COMFORTS AND INDIVIDUAL CARE

Entire charge is taken of children whose parents are abroad, and during the holidays those staying at the School lead a thoroughly happy life, spending as much time as possible out of doors, both in the country and by the sea.

Girls and Boys up to 10 years are received as day pupils at Stella Maris Convent, a separate house in Bideford.

For full particulars and Prospectus, apply to:

Rev. MOTHER SUPERIOR.

# STELLA MARIS CONVENT



LAKENHAM. NORTH FRONT.



View of Northam Burrows and the Sea Front from the Terrace.

# Edgehill Girls' College

BIDEFORD

RECOGNISED BY THE BOARD OF EDUCATION.



Headmistress: MISS E. CUTHBERTSON HILL, B.A.  
(Hons. London)

Assisted by a Fully Trained and Efficient Staff.



The College is beautifully situated. Fine Playing Courts and Fields. All New Buildings with Modern Equipment. Fees moderate. . . . Particulars with Prospectus from the Headmistress or Rev. W. Treffry, Bursar.



## West Bank School

BIDEFORD.

Recognised by the Board of Education and on the List of Efficient Schools.

Principal:

MISS ABBOTT.

Good Modern Education combined with a healthy outdoor life and a physical training.

Resident English, and Foreign Mistresses.

Visiting Professors.

## THE JUNIOR SCHOOL

WESTWARD HO! N. DEVON

EXTENSIVE PLAYING FIELDS

J. KELLOW WEBB, ESQ.

Assisted by a Staff of Resident Masters

*Prepares Boys of from 7 to 14 years of age for the Navy and Public Schools.*

The School is surrounded by its own Playing Field of five acres, and is situated 200 feet above sea level, on a hill commanding extensive views of Bideford Bay, Exmoor and Dartmoor.

The climate is bracing and invigorating, and particularly suited to boys inclined to delicacy.

Electric Light throughout. Sea Bathing daily during the season.

Boys have recently been passed into Haileybury, Marlborough, Blundell's, Uppingham, and Cheltenham.

## "NILGALA," BIDEFORD.

BEAUTIFULLY SITUATED ON HIGH GROUND. ALL EDUCATIONAL ADVANTAGES. RESIDENT & VISITING TEACHERS. PHYSICAL TRAINING.

The Second House, ELMFIELD, is within a short walk.

Telephone Bideford 178. Prospectus on Application to MISS DAWSON.

Telephone 150

## HEYWOOD & COCK

*General Drapers  
Costumiers, Milliners*

CARPETS, LINOLEUMS, CONGOLEUM SQUARES  
CURTAIN MATERIALS OF EVERY DESCRIPTION

*Always a Well Assorted Stock Moderately Priced*

1 & 2 GRENVILLE STREET & 58 MILL STREET  
BIDEFORD

TELEPHONE No. 32.

ERNEST LEONARD,  
— COAL MERCHANT —  
NEW ROAD, BIDEFORD.



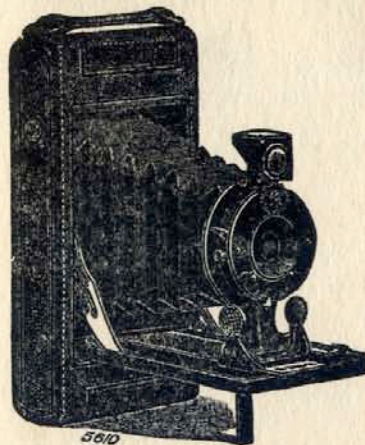
*Clothes make the man,  
Hepworths make the clothes!*

## HEPWORTHS

TAILORS, CLOTHIERS, OUTFITTERS  
TO MEN AND THEIR SONS

83, HIGH STREET, BIDEFORD

*Branches throughout Great Britain.*



The name to remember every time you click your "Kodak." — Jot it down now and send your films for expert development and sparkling prints on "Velox" paper to

R. J. ARNOLD, M.P.S., DISPENSING AND PHOTOGRAPHIC CHEMIST.  
14, ALLHALLAND STREET, BIDEFORD. Phone 19