



Torridge

**Glorious Devon,
at its glorious best.**

Self catering

Seaside bungalows



FROM
AS LOW AS
£8
PER
PERSON
INC.VAT
PER WEEK!

Westward Ho! Devon

Sleep 2-4-6. Lounge. 2 bedrooms. Bathroom, WC. H. & C. Kitchen. Full sized Electric Cooker. Fire. Fridge. Free T.V. Children Welcome. Bathing Straight from bungalow! Almost adjoining 3 miles of golden sands. Shops, Restaurants, Bars, etc., 2 min. walk. For FREE COLOUR brochure write:-

John Fowler Holidays DEPT. 11.,
Marlborough Road, Ilfracombe, Devon. Tel: Ilfracombe 64135

Welcome to Torridge

Glorious Devon, at its glorious best.

Variety is the keynote for holidays taken in the beautiful district of Torridge. Glorious, unspoilt countryside, magnificent coastal scenery, quaint villages and one of the finest beaches in the country at Westward-Ho, join together in an area of supreme attraction — glorious Devon at its glorious best.

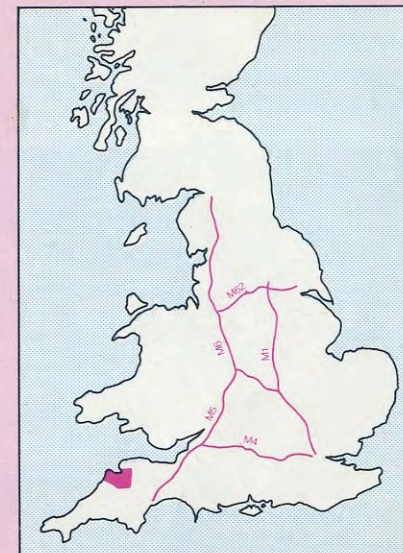
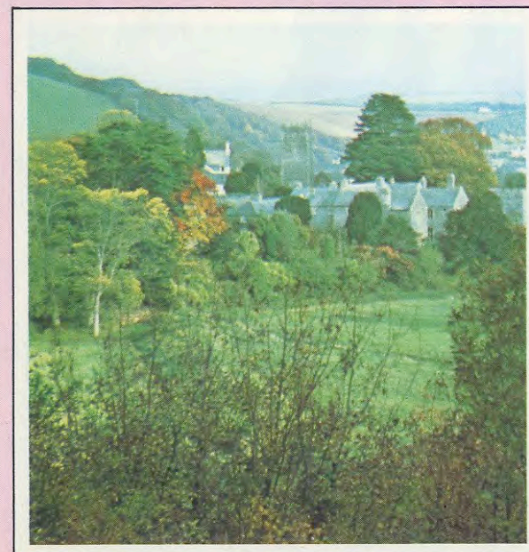
There's an appealing, leisurely pace to life that's just right for relaxing holidays, even for those who enjoy energetic pursuits like surfing, riding and hiking.

In fact whatever the style of holiday you want, you'll find it in Torridge. You'll find something else too that's invaluable for a happy holiday — a warm friendly welcome.

In this guide you'll find plenty of information to give you the special Torridge atmosphere. The map below shows Torridge on the majestic Atlantic coast, within easy distance of the M5 Motorway.

The accommodation offered is so varied that you're bound to find something to suit you.

Welcome to Torridge.



Bideford

Bideford, originally a seaport of some considerable repute, has, even today, managed to retain its seafaring links, with coasters regularly unloading beside the mile-long, tree-lined quay. The town's charm lies in its ability to provide the required calm yet still possess enough vitality to keep both young and old happy.

Beyond the Kingsley statue, the shady promenade is flanked on the one side by the Torridge and on the other by Victoria Park and the King George V playing fields. The flowers present a kaleidoscope of colour and there is a combination of sheltered, sun trapping and shady seats from which can be seen a variety of activities — bowls, putting, cricket, and of course, the heart-warming picture of children enjoying themselves in the paddling pool. The cannons around the bandstand originate from Armada galleons.

The Art Gallery situated in Victoria Park frequently houses one of the notable travelling exhibitions and the annual exhibition of the Westward Ho! and Bideford Art Society normally opens here in July and runs into August.

At certain times of the year the passenger steamer provides interesting trips around the coast including ones to Lundy and South Wales.

Bideford Bridge



Victoria Park



Interesting walks alongside the Torridge Estuary from Bideford to Appledore pass the new indoor shipyard.

The Torridge is noted for its maritime activities. Regattas are held in July off Appledore which also features sailing and Bideford Regatta is usually held during the first week in September.

The free Library at the west end of the Bridge has a fine selection of books devoted to the West Country, and in the Courtroom of the Town Hall, may be seen the Elizabeth I and James I Charters granted to the Borough.

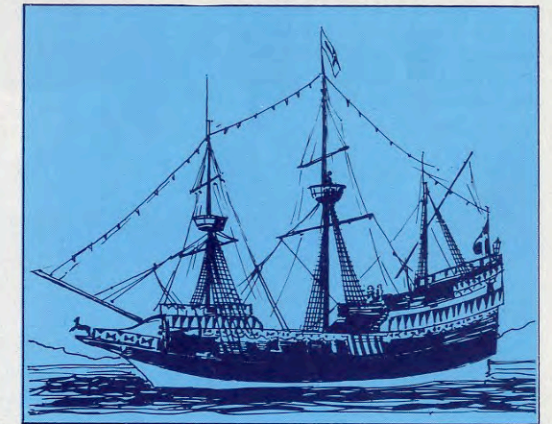
Appledore

Situated at the mouth of the Torridge is the ancient port of Appledore with seafaring traditions and shipbuilding yards that are a continuous source of interest to the visitor. They date from ancient times, and today build authentic replicas of ships such as the *Golden Hind* and modern cargo vessels.

Famous for its smuggling activities, Appledore still retains its individual characteristics with its numerous courts and narrow streets rising up from the Quay, and is of great interest to artists. The Lifeboat Station overlooks the Taw and Torridge estuaries.



Appledore, from Instow



The shipyard at Appledore built a magnificent replica of the Golden Hind

Market Street, Appledore



Torridge Estuary



Westward Ho!

The beach is one of the finest in the country and the safest in North Devon.

Three miles of firm sands slope gently into the sea. At the West end, the sands merge into rocks which form gullies and pools swarming with sea life, a paradise for young and old alike.

In contrast, behind the long pebble ridge so popular for sunbathing, lies 650 acres of flat common land called the Northam Burrows. Strolling quietly on the springy turf you will hear the skylark.

The Royal North Devon Course with its natural hazards is a challenge to any golfer and there's two putting greens, one on the sea front, tennis court, cricket, pony stables and convivial night life.



The beach, Westward Ho!



Holsworthy



Holsworthy's sleepy facade deceives the casual visitor. It is in fact a busy land port enjoying a remarkable range of facilities for its size while nevertheless retaining the atmosphere of a friendly local community. The twice-weekly cattle market is not just a tourist attraction but is one of the busiest in southern England and brings custom also to the merchants, banks, accountants, vets and other businesses based in the town.

Holsworthy boasts its own theatre, two community halls, health centre, schools, youth centre, museum, parks, golf course and industrial estate and the range of sporting and cultural activities available through the local clubs and the community college is as wide as in many cities. The annual Fair Week in July with its colourful Pretty Maid ceremony is widely known. In addition to its own Town Council Holsworthy retains, for ceremonial purposes, its ancient Court Leet presided over by the Portreeve. The town is 'twinned' with Aunay-sur-Odon in Normandy.

Left: the Church of St Peter and St Paul

Below: market day



Clovelly

One of the most famous villages in the world with its quaint cobbled and stepped street which descends the steep side of the cliff. The picturesque medley of little houses and cottages, built almost on top of one another are covered with shrubs and flowering plants which bloom well past their normal season. Around the village the luxuriantly wooded cliffs rise precipitously, providing a setting which is superbly lovely and picturesque. Clovelly village made history by winning, at its first attempt, the Britain in Bloom Cup as the prettiest floral village as well as the West Country Tourist Board's trophy.

The street where donkeys and sledges replace vehicles, zig-zags down to the stone quay where ancient cannons are set in as mooring bollards around the miniature harbour which provides a safe haven for sailing craft.



Above: the harbour, Clovelly

Right: Clovelly in Bloom

Boats at Clovelly



Hartland Point

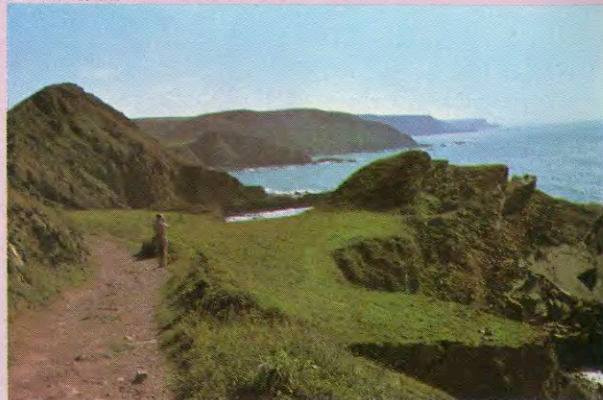
Hartland Point, rising in rocky splendour to 350 feet and overlooking the lighthouse which has the strongest light on the British coast, shelters the combs and coves towards Clovelly, but can offer little protection to the beaches on its southern side which face straight out to the Atlantic. There are several well-known beaches along this coast as well as smaller coves. One of these is Hartland Quay.

The coastal and inland scenery here is some of the most impressive and picturesque to be seen in a country which is so celebrated for its natural beauty. Streams flowing down steep wooded combs provide five waterfalls along the cliffs. Some two-and-a-half miles of coastline of romantic beauty extend eastwards from picturesque Mouth Mill with its rock formations to Hobby Lodge.

Stoke Church through the ruin



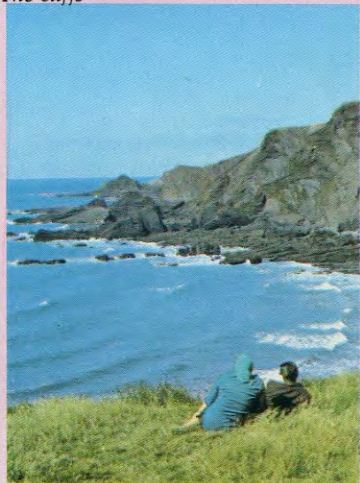
Coastal walk



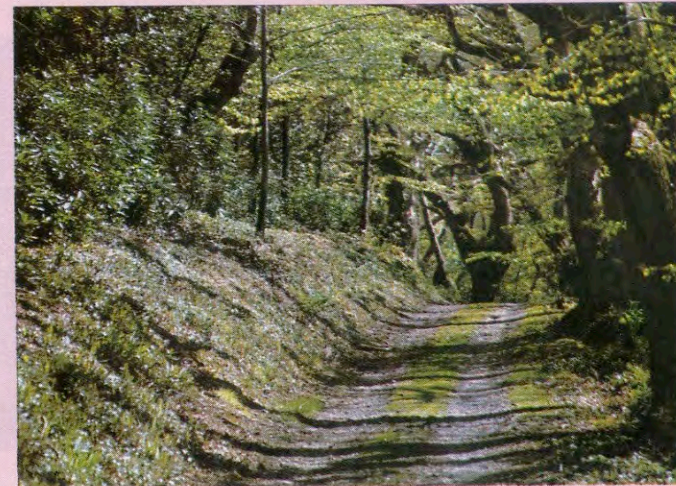
Stoke, Hartland



The cliffs



The village of Clovelly is surrounded by steep cliffs 400 feet high which are covered with luxuriant woodlands. The prettiest approach to Clovelly is through Hobby Drive the entrance to which is about one mile beyond Bucks Cross. The drive is three miles long through spectacular woodlands falling steeply to the sea with striking panoramas of the coast and Lundy Island.



*Right:
the path to Mouth Mill*

Black Church Rock



Great Torrington


The town of Great Torrington occupies its own exclusive high plateau giving magnificent viewpoints and is an admirable centre for the exploration of North Devon. The holiday maker is within easy reach of coast, moors and enchanting villages. From Saxon days Great Torrington has been known as a market centre for the area. Today, although there is no longer a cattle market, the visitor will find the shops able and willing to provide a friendly specialised service. There is a great deal of Georgian building and also seventeenth-century inns, notably the Black Horse and the Torr ridge Inn. A large indoor heated swimming pool now occupies the site of the old cattle market. Visitors can watch high-skilled glass blowers at work at the Dartington Glass factory. A special attraction is the beautiful Rosemoor Gardens to which visitors are welcome. The May Fair held on the first Thursday in May is still a picturesque and colourful event which attracts visitors from far and wide.

May Fair



Torrington Square



<p>SUNDERLAND'S Allhalland St. Clothes for the Discerning Gentleman</p> <p>Tea, Coffees, Snacks, Homemade Cakes, Scones, Pasties etc. Fresh clotted cream</p> <p>CLEVERDON'S CAFÉ Mill St.</p>	<p>H.V. WILLS 74 High St. Bideford 2131 Family Butcher for all your meat requirements</p> <p>Pottery Lamps Wedding Gifts</p> <p>HOPE HEARSON 33 Mill St. Sole official agents in Bideford for Dartington Glass</p>
<p>BIDEFORD CHAMBER OF COMMERCE</p> 	
<p>GARLAND Allhalland St. for Stationery Greeting Cards Art Materials</p> <p>T & J DERRIGAN Port Butcher & Delicatessen 48 Mill St. Bideford 2186 Pies Cooked Meats & Sausages speciality</p>	<p>TRAPNELLS The store in the High Street for Gifts and Crafts</p> <p>R. MACKENZIE DYE Bookseller 58 Mill St. Bideford 3792 The widest range of books in North Devon.</p>

SPRING AND AUTUMN IN DEVON



SMALL HOTEL AT LOVELY INSTOW

Few yards from sands at this picturesque boating area overlooking sea and estuary. Central for all North Devon beaches and towns. Beautiful countryside. Boat available. Film show every week. Good

food. Residents' Bar. Send stamp for colour brochure giving moderate terms and the comments of SHE magazine, SUNDAY TELEGRAPH magazine and others.

THE ANCHORAGE HOTEL

(Dept TG), The Quay, Instow, Near Bideford, North Devon

Telephone Instow (0271) 860655

TRESILLIAN HOTEL

BIDEFORD, DEVON



AA & RAC listed.

Tresillian offers a friendly and comfortable holiday in quiet and peaceful surroundings, yet only 3 mins. from the town centre or 5 mins. to the extensive sandy beaches of Westward Ho!

All sporting facilities are close at hand or you can spend the day in our acre of gardens or use any of our other facilities during the day. Our traditional cooking and generous quantities has gained us our reputation for which guests return.

If you wish for a relaxing evening, without driving, then please join us in our lounge bar.

Ample free parking available in hotel grounds.

You can be certain of a warm welcome and all the help we can possibly give to make your stay with us enjoyable.

Please see our detailed brochure, without obligation, before deciding where to stay, by writing to Fran and Neil Turner or Telephone Bideford (02372) 2662 or 6664



Caravan Garden near the sea.

A small select site with only sixteen caravans and one Chalet set amongst flowers and shrubs, each have a perfect sea view.

All units well equipped have electric mains gas cookers, drains, running water, T.V., some units with coloured T.V., refrigerator, fires, bath wash basin, toilet, hot and cold shower.

Flush sanitation, showers, laundry room with washing machines etc, shop opposites, few mins from beach and westward Ho village.

NO dogs peak season.

A licensed club is on an adjacent site.

S.A.E. Roslyn Caravan Gards. (W.G.)

Merley Road, Westward Ho!

Devon EX39 1JS

Telephone:- 02372-5281

SANDYMERE HOLIDAY BUNGALOWS

- ★ Accommodate 4/6 persons
- ★ Lounge, 2 bedrooms, bathroom and W.C., separate kitchen
- ★ Hot and cold water in kitchen and bathroom
- ★ All electric
- ★ TV in each bungalow

Well-spaced semi-detached bungalows on small private site across the Burrows from Westward Ho! Sands and away from main areas of caravans and chalets

SAE to: Mrs W. ROBERTS

'SANDYMERE', SANDYMERE ROAD, NORTHAM

Telephone Bideford 3975

THE PINES

ATLANTIC WAY, WESTWARD HO!

Holiday Flats and Flatlets

Standing in own grounds of six acres of attractive and colourful gardens and woodlands and with a magnificent sea view.

- ★ SELF-CONTAINED
- ★ WELL FURNISHED
- ★ FULLY EQUIPPED
- ★ MODERATE TERMS
- ★ TV HIRE SERVICE
- ★ FREE PARKING
- ★ SPRING INTERIOR MATTRESSES
- ★ MODERN OVEN COOKERS AND HEATERS
- ★ PEACEFUL AND PLEASANT SURROUNDINGS
- ★ IDEAL TOURING CENTRE

Under the Personal Supervision of the Resident Proprietors

Send stamp for Brochure:

DEPT W, THE PINES, ATLANTIC WAY, WESTWARD HO!
NORTH DEVON Telephone Bideford (02372) 5703

THE TYROLEAN BEER GARDEN

ENTERTAINMENT CENTRE

Bath Hotel Road

Westward Ho!

- ★ BEER GARDEN AND BARS for nightly entertainment
- ★ THE TYROLEAN RESTAURANT breakfasts, lunches and evening meals
- ★ THE TUM-TUM TAKE-AWAY MEAL SERVICE open from 10 a.m. to midnight

Pleasure for all the family

Walk by the river

Watch the salmon fishermen

Visit the Lifeboat Station

FRED FURSE, TURF ACCOUNTANT for people who appreciate an efficient & friendly service. 7 Nelson Terr. Westward Ho! & Silver St. Appledore To open credit account Tel Bideford 2373 (all lines)

TADWORTHY HOTEL. Traditional Food and Accommodation Tadworthy Rd Northam. Phone Bideford 4721

See the view from Bay View

For your Holiday Petrol & Motor Repairs visit F.C. TWOSE & SON Nelson Rd, Westward Ho! Phone Bideford 4129

For a quiet drink and bar snacks with an estuary view visit THE BEAVER INN (Watneys Ales) Irsha St Appledore Phone Bideford 4822

NORTHAM & DISTRICT
IN
DEVON
CHAMBER OF COMMERCE

We live upstairs, so our flats have got to be the best. B. H. SMITH No. 1 Marine Parade Appledore Phone Bideford 6154

PRINCE OF WALES HOTEL AND RESTAURANT. Irsha St. Appledore Fantastic views of river combined with good food & warm atmosphere Personal supervision Phone Bideford 77362

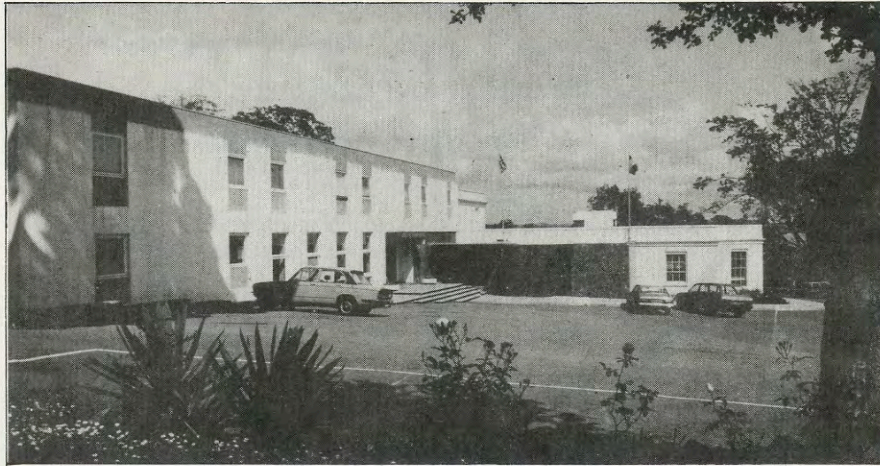
Visit the Maritime Museum

For all your pets Holiday requirements visit NORTHAM PET SHOP, 22 Fore St, Northam. Phone Bideford 6654

Remember your holiday with a plant from Northam Garden Centre. Choep Rd Northam. Phone Bideford 4403 Closed Thurs afternoons

Visit the Gallierin Marin

US'LL BE PLAISED TO ZEE'EE



Durrant House Hotel, Bideford

AA ★★★

North Devon

★★★ RAC

North Devon's most modern hotel.

58 rooms

(Most with private bathroom)

Superior rooms and executive suites

Excellent Cuisine

Live entertainment

Late bar, Dancing

Heated Swimming Pool (throughout season)

Ideal for conferences

Golfing Holidays

Special rates for parties

Credit cards accepted

Special Winter Weekend Rates

Telephone: 02372-2361

Ashley Courtenay — Egon Ronay — Euro Golf

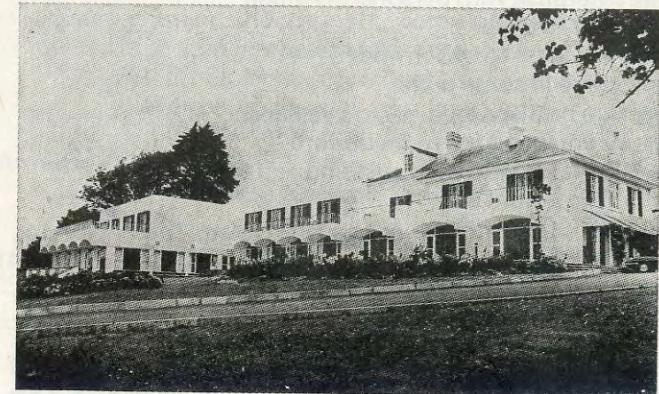
THE COMMODORE HOTEL

Marine Parade, Instow, North Devon

Telephone Instow 860347

AA ★★★

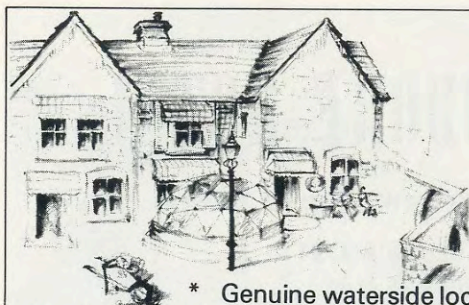
★★★ RAC



Fully licensed Hotel in own attractive grounds overlooking the beach and estuaries in the charming seaside village of Instow. 3 miles Bideford, 6 miles Barnstaple. Comfortable rooms with balconies, private bathrooms and TV.

Privately owned and managed by
BRUCE AND PATRICIA WOOLAWAY
 and family.

Telephone (0271) 860347



The Patio Pool Westward Ho!
For Self Catering Holidays.



* Genuine waterside location

- * Guaranteed observance of English Tourist Board's code of conduct
- * A small enterprise with personal attention
- * Television in all units
- * Immediate access to beach and rocks
- * Pets welcome in some units.
- * Dinghy Hire or Skippered Yacht available.
- * Units fully equipped for your comfort
- * Park the car(s) in your own standing and forget it
- * Large private leisure area

Send stamp for details to: Mr & Mrs D.C. Price, The Patio Pool,
Westward Ho!, Bideford North Devon EX39 1JY. Tel: Bideford 4158

The Coach and Horses

Buckland Brewer
Near Bideford N. Devon
Tel. Horns Cross 395

This picturesque thatched Freehouse dates from the 13th Century and has had a chequered history having amongst other things been a prison and a courthouse. To locate, take the Torrington road from Bideford for 2 miles and follow signposts. There are two bars and a delightful restaurant serving à-la-carte evening meals, trout and steaks being specialities; also a choice of 10 international coffees. In the bar an extensive menu is available at lunchtime and the evening — plus of course a wide range of beers, etc. comfortable but limited accommodation. (NB the resident ghost is friendly!)

PETER ADAMS and COMPANY

P.C. Adams, F.S.V.A., A.C.I.S.,
M.N. Adams

Auctioneers Estate Agents Valuers

19 The Quay, Bideford
Telephone 3166 (2 lines)

and at
Fore Street, Torrington
Telephone Torrington 2433

The Local Professionals.

Self Catering Accommodation

2½ mile Bideford

Two flats for up to 6 people.

One flat for up to 4 people.

All fully self contained with own outside entrances. Part of Manor Hosue situated in 17 acres of beautiful wooded ground. Quiet rural setting yet close to the coast.

The flats are fully equipped and are furnished and maintained to a high standard.

Facilities include: - washing and drying. Children's games room in the stable yard. Woodland barbeque. Parking spaces for each flat. One flat includes small equipped nursery.

Well behaved pets by arrangement.

For brochure write:-

Ann Bowcock, Webbery Manor, Alverdiscott, Bideford.
or phone Newton Tracey 362.

R.A.C. LISTED

Sunset Guest House

Landcross, Bideford, North Devon,
Telephone Bideford (02372) 2962

Open all year round.

Central Heating.

Highly recommended accommodation with finest menus, colour T.V. lounge, hot and cold in all rooms. Overlooking some of the most picturesque scenery in the West Country. Set back off the main Bideford to Torrington road in its own grounds with ample parking facilities. 1½ miles Bideford town, 4 miles beaches.

Spotlessly clean and comfortable throughout with every thought, consideration and help having gone in over the years to make a happy enjoyable stay.

Telephone or S.A.E. for Tariff or more information
to Mr & Mrs C.M. Lamb. Resident proprietors.

Edgehill College

BIDEFORD, DEVON

(Methodist Foundation)

**Independent School for Girls
from 4½ to 18**

The Preparatory School is co-educational (boarders accepted from the age of 8)

Small classes and an excellent teacher/pupil relationship

Firm, sensible discipline

Friendly family atmosphere

Wide range of outdoor activities and leisure facilities

Excellent Science and Language Laboratories

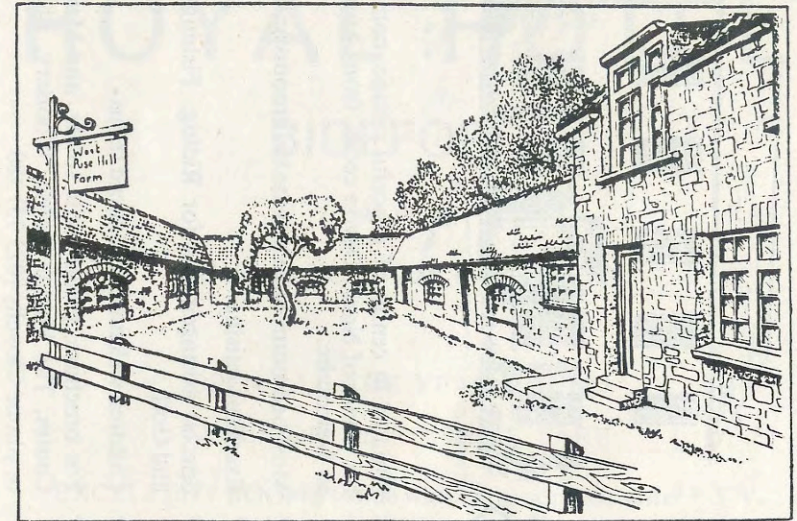
Common Entrance examination held in February and Awards examination held in March for September vacancies in the Senior School

For further details apply to:

THE HEAD

Telephone Bideford 3178

WEST PUSEHILL FARM HOLIDAY COTTAGES



The very best in self-catering

Approximately 1 mile from Westward Ho! beach and 2½ miles from the market town of Bideford, yet situated in the heart of the N. Devon countryside, six superbly modernised stone-built farm cottages in a picturesque setting, sleeping 2/6 persons.

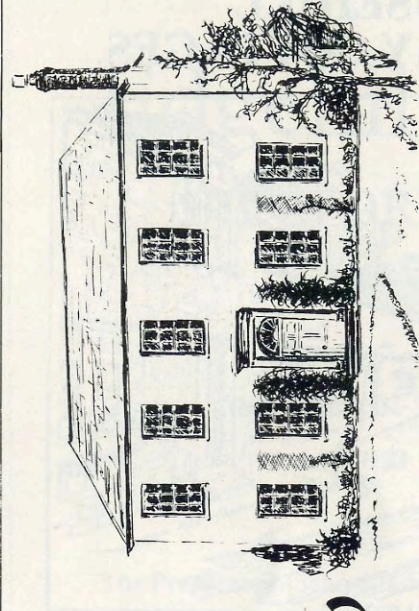
- * Bed linen supplied
- * Fully equipped
- * Colour T.V.
- * Pets welcome
- * Laundry room
- * Telephone
- * Games room
- * Cots available
- * Childrens play area
- * Picnic/sunbathing area

* Ample car Parking

Golf, surfing, riding, fishing, swimming, country and coastal walks nearby. Send S.A.E. or phone resident proprietors for brochure John & Gill Violet, West Pusehill Farm, Westward Ho! N. Devon. Telephone Bideford (023 72) 5638 or 4622.

Come to

The Manor House Woolfardisworthy



for superb licensed accommodation
also open to non-residents for:-

Morning coffee
Lunches
Afternoon teas
Dinners

Try our speciality — *Devon cream teas*

Only 3 miles from Clovelly

- * Situated in centre of peaceful village, convenient for whole of North Devon coast, from Appledore to Welcombe.
- * Most bedrooms have private bathrooms and TV
- * Excellent cuisine
- * Special arrangements for Riding, Fishing and Golf
- * Children welcome at reduced terms
- * For brochure, please write to Mr. and Mrs. J.M. Coates, The Manor House, Woolfery, Bideford, or phone Clovelly (023 73) 380

ROYAL HOTEL BIDEFORD

AA

★ ★ ★

RAC

Telephone (02372) 2005 (Management)

OPEN ALL THE YEAR ROUND
SUPERIOR DEVONSHIRE FARE

EXCELLENT ROOMS (some with bathrooms *en suite*) + T.V.

TWO FULLY LICENSED BARS

Ideally situated for touring the beautiful Devon Coast

FIRST-CLASS ACCOMMODATION

The 'Royal' was good enough for

CHARLES KINGSLEY

who stayed here in 1845 whilst working on his famous book
Westward Ho!

We know it is good enough for you because we have improved
it a lot since then.

take the gamble
out of investment!



put YOUR money
on the favourite...
WESTERN COUNTIES

The going's always good at Western Counties! Being a local Building Society we know the form ... we've been studying the course since 1862 which means we are very much aware of the problems and conditions affecting the West Country, enabling us to look after our investors just that little bit better.

Why gamble with your money when you can back a winner every time at Western Counties.

Join the Moneymakers

WESTERN COUNTIES
BUILDING SOCIETY

For Investment or Mortgage Facilities apply
Head Office: 20 The Quay, Bideford
Telephone 2421



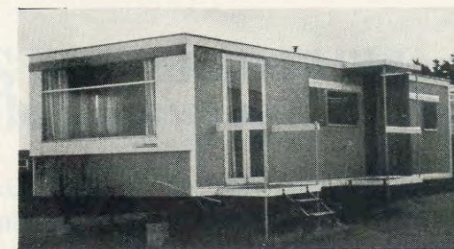
Branches at:

Barnstaple Tiverton Newton Abbot Taunton Exmouth
Penzance and Truro

Modern Luxury Caravans

at Westward Ho!

4 and 6-BERTH



All Caravans are fully equipped, and have electricity, running water, flush toilets and some have showers.

On well spaced select site, with wonderful view of the three miles of golden sands. Shop with farm produce. Hot and cold showers, flush sanitation, shaving points, laundry room with washing machines, spin driers and irons.

We regret no dogs allowed.

SAE for Brochure from: ALAN BOOT
30 Summerfield, Sidmouth, Devon
Telephone number Sidmouth 6627

WESTWARD HO! NORTH DEVON

"Best view in Devon"

Carefree happy holidays for all with no restrictions

Self-contained flats and bungalows

Sleeping two to eight persons

- * All Flats have own bathroom and colour television
- * Bed linen available (extra charge)
- * Free parking
- * Overlooking sea and golden sands
- * Safe bathing and surfing
- * Your comfort is our aim
- * All mains services
- * T.V. available
- * Pets welcome
- * Also a few caravans on small select site
- * All mains services
- * Showers, washbasins, etc.

Write to Write for illustrated brochure to:-
Mrs Need, Dept V, Stanwell, Westward Ho!
Devon EX39 1AF
Telephone: Bideford (02372) 6105

The Chantry Guest House

NELSON ROAD
WESTWARD HO!

Telephone Bideford (02372) 4605

- ★ Comfortable family Guest House
- ★ Two minutes from beach
- ★ Single, double and family rooms
- ★ Central heating. Open all year
- ★ TV lounge, shaver points, H. & C.
- ★ Free parking space
- ★ Children of all ages welcome
- ★ No restrictions
- ★ Access to rooms at all times
- ★ Bed and full English breakfast.

Please send SAE for Brochure to:
Jack and Jane EASTMOND

Edgehill Flatlets & Chalets, Westward Ho!

There is always a friendly welcome for all the family at Edgehill Holiday Flatlets and Chalets. Fully equipped units for two to six guests, with extra bedrooms for larger parties. Ample parking, sheltered garden, sales kiosk. Wonderful view over the bay with its miles of golden sands and safe bathing. Cottage for 4 also available.

Send for illustrated brochure to Resident Proprietors
Don & Edith Wallis Dept. A.
Edgehill Holiday Flatlets & Chalets,
134 Bay View Road, Westward Ho!, N. Devon EX39 1BJ.
Tel: Bideford (02372) 4798

BEACON HOUSE
ORCHARD HILL
BIDEFORD
DEVON EX39 2RA
Tel. Bideford 2542

Self-Catering Holiday Apartments

Fully equipped each with Lounge,
Kitchen/diner, 1-2 bedrooms,
Bathroom/WC. Accommodating
2-6, T.V. and linen included.
Peacefull location, overlooking
town and Torridge Valley. Beach
within easy reach.

Please send stamp for Brochure
to:-

Beacon House,
Orchard Hill, Bideford.
Telephone Bideford 2542

FAMILY CRAFT HOLIDAYS
CONFERENCE FACILITIES
ARTS EVENTS
PHOTOGRAPHIC ARCHIVE
CRAFT CLASSES
COMMUNITY ARTS PROJECT
ORCHARD THEATRE TOURS

All enquiries to the Publicity Office

The
Beaford
Centre
Beaford
Winkleigh
Devon
EX19 8LU
Tel Beaford 201 (STD Code 080 53)

STOP!

Not only are you reading the right holiday guide, but you have turned to the right page, and reading this you must be reading the right advertisement.

So far so good – don't spoil the sequence.

Send straight away for brochure and make an immediate reservation—at the right place . . .

All our caravans are connected to main services – i.e. electric, water, & drainage with flush toilets – some larger models have shower room or bathroom. All have refrigerators.

We have one of the finest views in North Devon and yet only six minutes' walk to the beach which has three miles of golden sands with safe bathing and surf riding. Golf course nearby, shop on site with farm produce. Also toilet blocks on the park with flush sanitation & H & C showers & laundry room.

We look forward to your paying us a visit.

SAE for Brochure.

Sites, Sales, Caravans for hire, Repairs and Accessories.

Caravans for hire up to 40 feet long with main services
Regret no dogs

Atlantic Sands Trailer Park
Cornborough Road, Westward Ho!, Bideford, North Devon
Telephone Bideford 4774

While on holiday in Torridge don't forget to visit the

**INFORMATION CENTRE
KINGSLEY ROAD
BIDEFORD**

Details of "Places of interest" — "What's on"
and "Local Events"

Accommodation booking service available

Open May—Sept Tel No. 77676

This service provided by
TORRIDGE AND DISTRICT PUBLICITY ASSOCIATION
in conjunction with West County and English Tourist Boards.

Industrial Land — Torridge District.

Land and small units available for Light Industry in the village of BRADWORTHY; grants available for manufacturing industry. Land for key worker housing also available.

Further opportunities for the relocation and expansion of industry elsewhere in the District.

For further details, contact:
Planning and Development Dept.
Torridge District Council,
20 Allhalland St.,
Bideford (02372) 6711 Ext. 297

DEERHURST CARAVANS

**IDEAL FOR HOLIDAY
IN DELIGHTFUL DEVON**



Situated on a small private site. All caravans have mains gas for cooking and water heating, gas is inclusive. Electricity is metered for lighting, heating, refrigerator and television. Flush toilet, mains drainage, some have own shower.

This attractive little site is well maintained and has a good concrete road. Facilities include laundry room with coin operated speed Queen washing machine, tumble dryer, ironing facilities. Shower block, flush toilets. For the younger children there is a small paddling pool and sand pit.

About 8 mins walk to large safe sandy beach. Nearby is the Royal North Devon golf course, also shops, bus stop, horse riding, licensed clubs etc.

Dogs are not permitted.

Details of terms and further information will be gladly sent on request (with SAE, please).

**Mr R. P. and Mrs G. M. WHITEMAN (Dept. TG), DEERHURST CARAVANS
BEACH ROAD, WESTWARD HO!, BIDEFORD, DEVON, EX39 1HQ
Telephone Bideford (02372) 4548**

Sonnenheim Private Hotel

HEYWOOD ROAD · BIDEFORD · NORTH DEVON

Open all year

Licensed

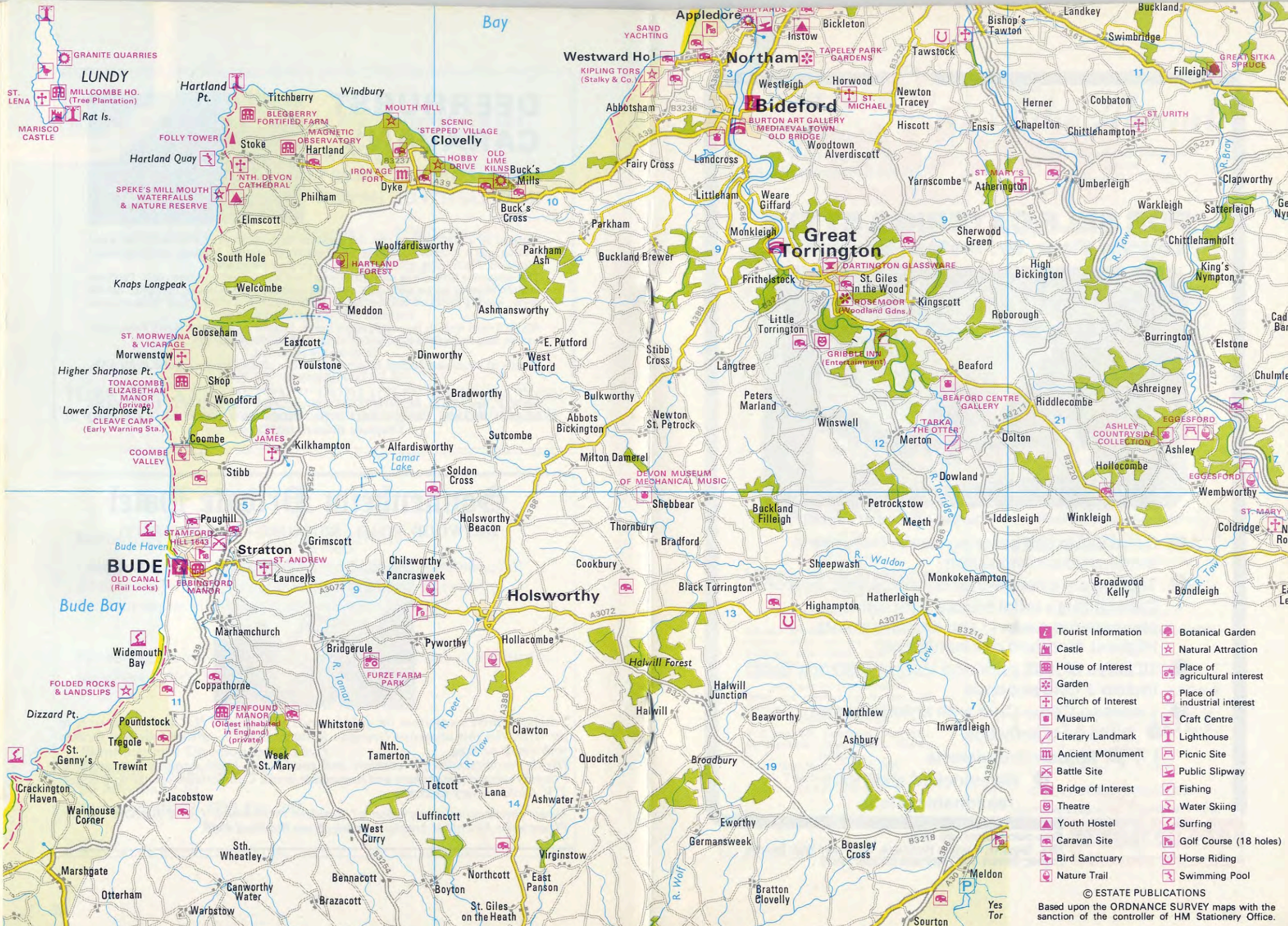
AA R.A.C. Listed



5 minutes, drive away from the golden sands of Westward Ho! and a short walk to the river, lies this attractive Georgian Residence. Set in its own spacious gardens with ample parking.

Highly recommended for comfort and good food. Fresh home grown produce. Friendly relaxed atmosphere and reasonable terms. Comfortable lounge with colour T.V. Children very welcome.

Under the personal supervision of Resident Proprietors, Leo & Barbara Spitzer. Please write for colour brochure or telephone Bideford 4989.



- | | |
|--|--|
| | |
| | |
| | |
| | |
| | |
| | |
| | |
| | |
| | |
| | |
| | |
| | |
| | |
| | |
| | |

© ESTATE PUBLICATIONS
 Based upon the ORDNANCE SURVEY maps with the
 sanction of the controller of HM Stationery Office.



martins
HOLIDAYS

FOR SELF CATERING STYLE
Lagoon View, Nr. Instow, Barnstaple.



Touring pitches at Lagoon View

- Good value self catering family holidays in modern accommodation
- Touring caravans/motor caravans very welcome
- Central flush toilet blocks with hot water, showers (no meters) and shaving points. Highest standard of cleanliness.
- 10 acres of lush parkland a short distance from Instow's golden sands
- Licensed Cedar Club with entertainment
 - Children's activities
 - Modern launderette
 - Well-stocked shop with reasonable prices



martins
HOLIDAYS

Free colour brochure from:
Mrs. Toggett, Martins Holidays, Countess Weir House,
Exeter, Devon Tel: Topsham (039287) 5045

“THE NOOK”

Golf Links Rd.,
Westward Ho!
Tel. Bideford (02372) 6058.

Large bungalow, 110 yds from sea front, H & C all rooms, & shaving points. T.V. lounge, central heating. Free parking. Bed and English Breakfast Evening Meal optional.

Open Easter — October.
S.A.E.
Mr & Mrs S. Vance

The Mount

Northdown Road, Bideford
N. Devon
Telephone 02372 3748

AA
Listed

English
Tourist
Board Registered

Here's a friendly hotel with table licence within few minutes walk of the Quay and town centre. Our visitors are assured of warmth comfort good food and a welcome without restrictions in pleasant surroundings.
Our brochure with pleasure SAE please.
Resident Proprietors:
Charles and Rosemary Hallett

CARAVANS

6 and 7-Berth
sited at
Atlantic Sands Trailer Park
Westward Ho!

All our caravans have their own flush toilets, water to the sink, mains drainage, also electric light, fire, 4-5 cubic foot refrigerator and 20 in. television. Clean modern caravans well equipped for every comfort.

Select site overlooking the sea with flush toilets, showers, shaving points, laundrette and shops.

P.T. and M.D. Armstrong (Dept WH),
81 Haslucks Green Road, Shirley,
Solihull,
West Midlands, B90 2EE.
Telephone 021 744 6923
SAE for Brochure

Bradbourne House
Marine Parade, Appledore

Beautiful Georgian House with spiral staircase to guest rooms overlooking river Torridge. Ideal position for touring.

Bed Breakfast. H/C all bedrooms.
Moderate terms.

Also Flat to let. Sleeps 5

Barbara Rogers. Tel. Bideford 4395

AA★★ RAC★★

CASTLE HILL
HOTEL

GREAT TORRINGTON 2339

Accommodation functions our
speciality
Beautiful garden
Children catered for

TANTON'S HOTEL

The Quay, Bideford

Telephone (02372) 3317

Family Hotel

Under the personal supervision of the owners

This 30-bedroomed hotel (most with private bath), with parts dating back to the eighteenth century, has been modernised but retains its 'olde worlde' atmosphere.

Some rooms with river views. Lift. Central heating.
Restaurant open to non-residents. Bar snacks.

Open all year round.

Fishing, golf, hunting and sailing within easy reach.

In addition self-catering units are available sleeping 2-6 persons.



BEACONSIDE

is a country house set in its own grounds with spectacular views over the Torridge valley. Situated 2½ miles South of Bideford, it is a comfortable and pretty retreat for those who like to get away from it all without necessarily renouncing the pleasures of sophisticated living. Each of our nine bedrooms is individually decorated and furnished and has its own bath or shower room. Outside there is a heated swimming pool and a grass tennis court, while inside there is a well stocked library and an equally well stocked cellar. Our food — in the French tradition with a dash of English country house added — deserves the accolades in our visitors book.

Beaconside Monkleigh near Bideford, Devon EX39 5JL
Telephone Bideford (02372) 77205

Rumba Guest House

CHUDLEIGH ROAD, EAST-THE-WATER, BIDEFORD, NORTH DEVON

Telephone (02372) 2133



Friendly, Licensed family Guest House, in quiet private road overlooking Bideford Quay and Town. Ten minutes walk to Town Centre. Spacious comfortable rooms all with H & C and shaver points, and with impressive views. Ample bathroom and toilet facilities. Guest lounge with colour TV and waiter service. Parking space on premises (boat trailers without charge by arrangement). Generous off-season (September to June) reductions particularly for Senior Citizens. Open all year. Children welcome. Dogs genuinely welcome in house without charge. Baby listening without charge. Early morning tea included. B.B. (E.D. optional). Hot and cold evening drinks, flask filling and sandwich packs at reasonable cost.

English cooked breakfasts and substantial five-course evening dinners. Guests comment favourably on the variety and satisfying standard of catering. Highly recommended, (not by the Proprietor) but by the oft-returning guests who remark accordingly in the Visitors' Book. The house is equipped in accordance with the Fire Precautions Act, 1971 and the Devon Fire Brigade Certificate is held.

Moderate terms include VAT element. No Service or hidden charges.

Clare and Jack Watson welcome your enquiries and would be happy to give you their personal service.

SAE for Illustrated brochure and Tariff.



New Inn Hotel

BIDEFORD

Phone 2810

500 year old Coaching Inn and Family Hotel.

Good Accommodation, Food and Service. Children and Pets welcome. RAC**

Ideal Centre for N'Devon.

For the perfect holiday by the sea try a . . .

CARAVAN

. . . this year

200 yards from the sea front

Caravans are situated in a small, select Garden Site set amongst flowers and shrubs, and each has a perfect sea view.

The Caravans have electric lighting, are fully equipped and all have running water and mains gas. Television available in larger caravans. Mains sanitation and showers. Linen Hire Service, also cot and push chairs.

**PERSONAL SUPERVISION
CLEANLINESS GUARANTEED**

For free Brochure write to: Dept. N

Sunray Caravan Gardens

WESTWARD HO!, DEVON

Telephone Bideford 4800 and 7792

GREAT TORRINGTON SWIMMING POOL

INDOOR HEATED

SCHOOL LANE
GREAT TORRINGTON

Telephone Torrington 2597

Springboard available at suitable times. Ample free car parking nearby. Details of charges and public opening hours obtainable from the Pool.

Lifeguards always on duty

Buckleigh Pines

WESTWARD HO! BIDEFORD DEVON Tel: Bideford 4783

Situated in a beautiful, peaceful district overlooking the sea, Buckleigh Pines caters for the discriminating holidaymaker.

The 20 chalets, caravans and maisonettes, surrounded by gardens and lawns, are fully equipped and furnished to a high standard with every facility (and colour TV) included in the terms. All accommodation is thoroughly cleaned and guaranteed spotless for your arrival. Concessionary terms for couples taking off-season holidays. Heated swimming pool. Please send stamp for brochure. Buckleigh Pines



ROSSKERRY

Hotel and Restaurant

**ORCHARD HILL, BIDEFORD,
DEVON, EX39 2QY**

Telephone Bideford 2872

LICENSED COUNTRY HOUSE

AA* RAC* Proprietors:

Mr and Mrs D. L. Butler

Rosskerry is a small friendly hotel quietly situated in two acres of delightful garden overlooking the River Torridge.

Offering a fine standard of cuisine with a choice at each meal.

Rooms with private bathrooms.

Colour brochure.



F. JOHNS & SONS INSTOW

Boatmen and Yacht Chandlers

Telephone Instow 860578

INSTOW AND APPLIEDORE FERRY

MOORINGS AVAILABLE

SMALL CRAFT TRANSPORT UP TO 2 TONS

MERCURY, EVINRUDE,

CHRYSLER SALES AND SERVICES

- ★ MARLOW ROPES
- ★ TALURIT SPLICING
- ★ CORDAGE
- ★ FITTINGS
- ★ LIFEJACKETS
- ★ ANCHORS
- ★ INTERNATIONAL PAINTS
- ★ RIGGING
- ★ AVON INFLATABLES
- ★ OARS AND PADDLES

All in stock

'Little Burrough'

Northam, N. Devon
Bill & Pauline Paul

Enjoy your holidays in North Devon. We offer good food in clean comfortable surroundings.

Centrally placed for good beaches and beautiful countryside.

H & C in all rooms. Dining Room, Lounge with Colour T.V.

S.A.E. for details or phone Bideford 5955

HOLIDAY COTTAGES

Northam/Westward Ho! and Bideford. Sleeping 4-6, fully equipped except linen. Convenient shops, transport, beaches.

For full freedom to explore at leisure this beautiful part of Devon, a self-catering holiday is ideal.

All inquiries:

Mrs E. Sealy, Uplands, Orchard Hill,
Bideford EX39 2QY
Telephone Bideford 2661

Please enclose stamped addressed envelope for brochure

Marchwood House Holiday Flats

Limers Lane, Northam, Bideford, North Devon.

Detached house in select residential area, minutes from sands, shops, buses, offers

Fully equipped flats

with own kitchen, bathroom/w.c., free TV, linen, parking. Cot available. Cleanliness guaranteed. German spoken. Coach travellers met at Bideford Coach Station without charge. SAE, please, for details of moderate terms etc. from

Resident Proprietors: W.J. & M.J. Bolt.

Phone Bideford (STD 02372) 77627.

School Pictures Ltd

SERVICING SCHOOL
PHOTOGRAPHERS IN THE
U.K., EUROPE AND
MIDDLE EAST

Greenbank, Torrington
North Devon, EX38 7DP
Telephone Torrington 3346/7

WESTWARD HO!

- ★ Six-berth chalet in own grounds with lawn
- ★ Four-berth chalet in own grounds with lawn
- ★ Both in excellent condition
- ★ Cleanliness guaranteed
- ★ Under Personal Supervision
- ★ Overlooking and near sea and sands

Details: SAE Jewell,
"Nicosia," Merley Road,
Westward Ho!, N. Devon
EX39 1JS
Telephone: Bideford 4333

APPLEDORE HOLIDAY LETTING AGENCY

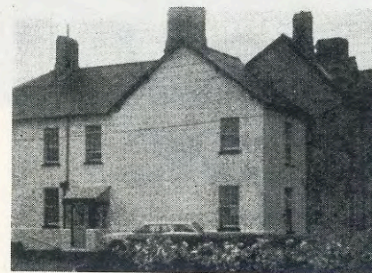
10 MARKET STREET, APPLEDORE, NORTH DEVON, TEL BID 6191

Personally inspected and managed
SUPERIOR HOUSES, FLATS, COTTAGES,
in Westward Ho and Appledore.
on Unspoilt Taw/Torridge Estuary.

Visit APPLEDORE

come to THE SEA CHEST in Market Street.

For your Maritime Souvenirs, Breton Sweaters, Genuine Guernseys,
Sea-fishing Tackle, Boat Trips, Tee Shirts printed while-U-wait.



BURROUGH FARM

CHURCHILL WAY
NORTHAM, Near BIDEFORD

A warm and friendly welcome awaits you at our family run guest house. Open all year round including Christmas.

- ★ Guests own TV lounge/dining room, separate tables.
- ★ Spacious bedrooms all with hot and cold water, bathroom with shower.
- ★ Families catered for.
- ★ Home grown produce. Traditional English cooking.
- ★ Ample private parking space.

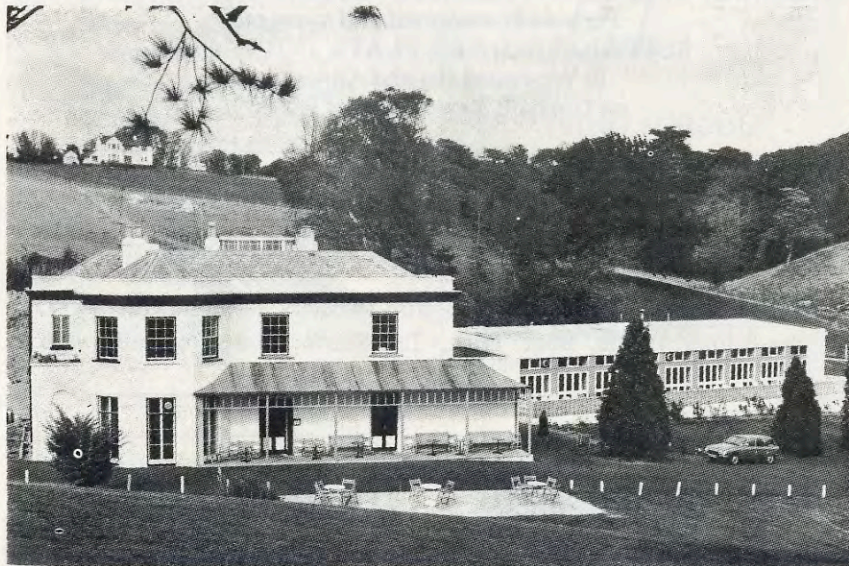
We are centrally situated to Appledore, Westward Ho! and Bideford.

Please send stamp for details to: Mrs Lea or Mrs Lawrence
or telephone Bideford (02372) 2787

LENWOOD COUNTRY CLUB

Between Westward Ho! and Bideford

In nearly 9-acre grounds, spacious, 2, 3 and 4-bedroomed self-catering bungalows, each with private bathroom, are open to visitors from Easter to October.



- ★ Large Indoor Heated Swimming Pool
- ★ Licensed Club and Restaurant
- ★ Table Tennis
- ★ Three Squash Courts
- ★ Two Tennis Courts
- ★ Skittle Alley and Billiards
- ★ Ample Parking Space
- ★ Near Good Sandy Beaches
- ★ Ideal and Safe for Children
- ★ Excellent Golf, Fishing, Sailing and Riding nearby
- ★ Within easy reach of Exmoor and Dartmoor

Stamp for Colour Brochure from:

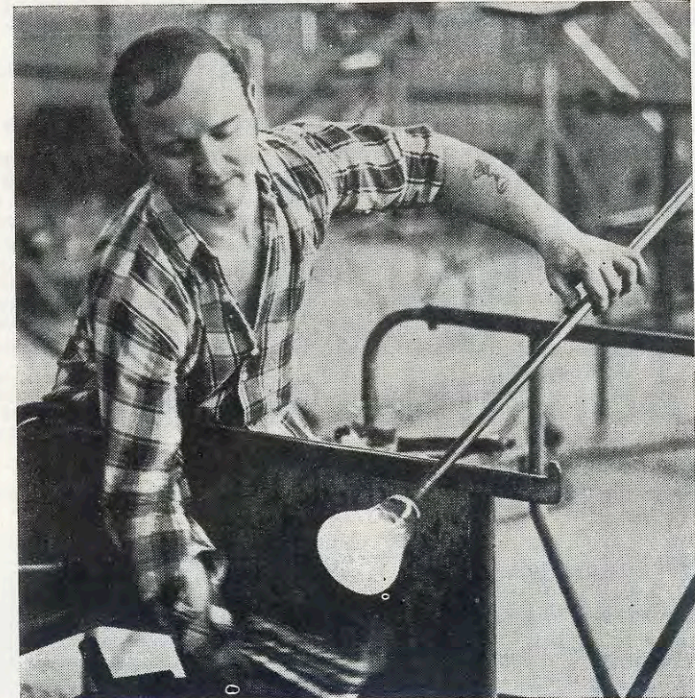
LENWOOD COUNTRY CLUB (TG)

NORTHAM, NORTH DEVON

Telephone Bideford 4372

Dartington Glass Ltd

TORRINGTON, NORTH DEVON



Dartington Glass invites you to tour the works and see the production of hand-made glass.

GUIDED TOURS

(For which a nominal charge is made). Monday to Friday 9.30—10.30 a.m. and 12 noon—3.30 p.m. Parties by appointment only.

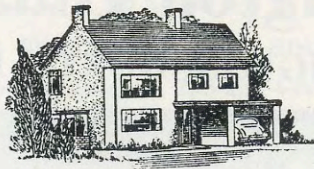
IMPORTANT NOTE

We reserve the right, particularly during Summer months to alter or cancel tours without notice. Visitors making a special journey are advised to telephone Torrington 3797. There are no Factory Tours at week-ends and Bank Holidays.

GLASS SHOP

(Selling slightly imperfect glassware). Open Monday—Friday 9 a.m.—5 p.m., Saturday 10 a.m.—4 p.m.

Dartington Glass is available from stockists throughout the country. List of retailers and information about other Dartington Enterprises available on application.



Long before the charms of Bideford and District became known to holiday makers throughout the country . . .

BIDEFORD AND NORTH DEVON BUILDING SOCIETY

were giving their friendly, helpful service to the community

Whether it's saving or buying, **SECURITY** is the keynote. Basic Rate Income Tax paid on investments—easy withdrawals. Liberal advances to house purchasers

Inquiries welcomed at . . .

5 THE QUAY, BIDEFORD
Telephone Bideford 79345

Established 1853 — Member of the Building Societies' Association

Authorised for Investment by Trustees

GAYSANDS SELF-CATERING FLATS & FLATLETS

ATLANTIC WAY, WESTWARD HO!,
NORTH DEVON

A FEW MINUTES ONLY FROM
THE BEACH

- * Full equipped (including bed linen) and TV and comfortably furnished to accommodate from two to eight people.
- * A lovely house with a most delightful rose garden, lawns and attractive grounds of three acres.
- * Superb position with magnificent views across the bay.
- * Free parking in grounds.

*Stamp for Brochure with full details,
Resident Proprietors:
Mr and Mrs S.C. Barson
Telephone Bideford 3819*

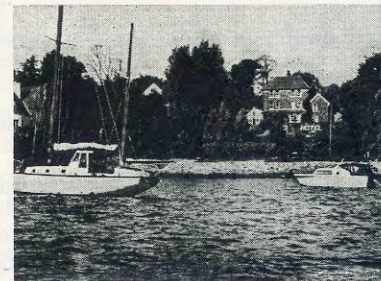
The Edelweiss
Friendly Family Hotel

RAC AA

Buttgarden St. Bideford
North Devon, EX39 2AU
Telephone (023 72) 2676

Every Modern Comfort. Good Value. Cosy Austrian style restaurant & bar. Choice of menu at Breakfast & Dinner. Engl/Cont. à la carte menu available. Magnificent view over River Torridge. Excellent touring centre for Exmoor, Dartmoor and Cornwall. 2½ miles from beaches. Open all year. Childr/Sen.C. reduced.

A warm welcome awaits you from the Resident Proprietress:
Martina Schulhof
SAE for colour brochure.



Relax at

RIVERSFORD HOTEL

LIMERS LANE, BIDEFORD
NORTH DEVON, EX39 2RG
Telephone Bideford 4239
Telex 45388

The two acres of gardens provide a peaceful haven for relaxation beside the River Torridge with free dinghy park, slipway and car park.

- | | |
|--|--|
| <ul style="list-style-type: none"> ★ LICENSED ★ FAMILY, DOUBLE AND SINGLE BEDROOMS ★ SEPARATE TABLES ★ COLOUR TV | <ul style="list-style-type: none"> ★ LOUNGE BAR ★ EXCELLENT FOOD ★ PRIVATE BATHROOMS ★ GAMES LAWN ★ FREE MOORINGS |
|--|--|
- ★ CHILDREN WELCOME

PERSONAL ATTENTION COLOUR BROCHURE ON REQUEST
Resident Proprietors: Maurice and Merrilyn Jarrad

YEOLDON HOUSE

Hotel and Restaurant

Durrant Lane, Northam, near Bideford, Devon EX39 2RL

Telephone: Bideford (02372) 4400/6618



**Open Yearround for
Summer Holidays
Winter and Offseason Breaks
Gourmet Weekends**

A.A. * * R.A.C.



Egon Ronay and Ashley Courtenay Recommended

COMMENDED for Outstanding Welcome and quality of service

Peace and quiet in a beautiful garden with a magnificent view over the River Torridge.

Cordon Bleu Cuisine, interesting Cellar and Personal Service.



Trew Farm

Higher Clovelly, near Bideford

Spacious farm house flat sleep 6/8 persons, shower, T.V. central heating, lounge/kitchen diner. Three double bedrooms.
150 acre — Dairy farm.

Hayes Clovelly 376 for details.

FULLY EQUIPPED HOLIDAY FLATS

**8 NELSON TERRACE
WESTWARD HO!**

Each with own bathroom, kitchen and TV. Sleep 2-7. Minutes from sea, shops and buses.

SAE: Mrs R. BRADFORD

8 Nelson Terrace, Westward Ho!
EX39 1LG

Telephone Bideford 3832/4556

Whilst it is hoped that establishments advertising in this Guide will give satisfactory service, the inclusion of any advertisement does not necessarily imply a recommendation and the publishers cannot accept responsibility for the accuracy of information included or accept any liability, whether expressed or implied in regard to such advertisements.

Mrs J. Dixon, 'Mandalay', 30 Northview Avenue, Bideford. Telephone Bideford 5569. Bed and Breakfast. Clean, comfortable home from home accommodation. Highly recommended. Easy access town centre.

Littleham. Bed, Breakfast and Evening Meal. Car space. Village near shops, sea. Excellent views. Double, family rooms, own bathroom. S. Foad, Higher View, Littleham. Telephone Bideford 4626.

Kingsland Stables P.O.B. App. BHs rec. Forestry Riding. Fit Horses/Ponies. Good supervision. Full time staff. Hard hats provided. Novices/children welcome. Refreshment/souvenir shop. Clovelly 378

Central Northam. Spacious self-contained 3-bedroomed Flat. Sleep 7 comfortably. Television. Parking. Garden. SAE appreciated. Westlake, 21 North Street, Northam. Telephone Bideford 2648.

Hartland Point. Bideford Devon. Bed - Breakfast - Evening meal at West Titchberry Coastal Farm near Shipload Bay. Also self catering accommodation in Farm Cottage. Mrs. Heard Hartland 287.

Appledore. Bed & Breakfast — Comfortable friendly accommodation. Overlooking river Torridge. H. & C. all bedrooms. Moderate terms. Regret no pets. Mrs J. Kendall-Anchorage, 3 Marine Parade Appledore N. Devon. Bideford 78219

Central Northam, fully equiped 3 bedroom cottage. Free T.V. and parking in garden. Sleeps 8 in full size beds. Mrs Fran Turner, "Tresillian", Raleigh Hill, Bideford. Tel Bideford 2662 or 6664.

Beautiful coastal position near Clovelly. Modern privately owned chalet. With glorious sea views. Country club, Heated pools, etc. Hooper — Fay Road, Dawlish, Devon. Tel. 0626 862925.

Bideford. Self-contained centrally heated ground floor flat. Sleeps 2-4. One minute to Quay. No pets. SAE appreciated. Miss Babb, 1 Marine Gardens, Bideford. Telephone: Bideford 3466.

Northam. Warm welcome. Bed, Breakfast and Evening Meal. Sea and estuary views. Excellent food. Every comfort. Recommended. Mrs Holbrook, 10 Lundy View, Northam. Telephone Bideford 2538.

Northam. Self catering flats/caravans Quiet position in grounds of Country House 1½ miles Westwood Ho! Appledore. Gresham Court, Lenwood Road, Northam, Bideford 5296.

Southcott House, Weare Giffard. Beautifully situated country house, 4 miles up river from Bideford. Bed and breakfast, dinner optional. Also self-contained cottage. Bideford 3674.

Torrington. Smytham Guest House Caravan and Camping Park. Seventeenth-century house in 13 acres, ideal centre for holidaymakers, swimming pool in grounds. Telephone Torrington 2110.

Westward Ho! 6-berth caravan on pleasant site, close sea. Fully equipped, mains water connected and television. Mrs Yatman, 51 Atlantic Way, Westward Ho! Bideford 4789.

Mrs D. Nickels, Vine Cottage, Weare Giffard, near Bideford. Telephone Bideford 77142. Beautiful Devon village. Bed and Breakfast. Optional Evening Meal. Garage. Clean, homely accommodation.

Wearland, Westleigh — Farmhouse in beautiful countryside. Luxurious accommodation and succulent home cooking. Near beaches, yet secluded. Also 6 berth caravan. Tel: Bideford 78311.

Homely accommodation offering good food, 3 miles from Bideford. Children welcome. Car space. Bed, Breakfast, Evening Meal available. Mrs. Roker, "Sunnyview", Littleham, Bideford. Telephone:- Bideford 6315.

Devon Westward Ho! 5 mins. beach. Large 5 berth holiday caravan. T.V., bathroom, toilet. Fully equipped. Mrs. Hearn. "Joslyn", Moreton Drive, Bideford, Devon. Phone Bideford 5655.

North Devon — 18th century, pretty country cottage. Peaceful. Near lovely coastline Bideford to Bude. Comfortable col. T.V. Riding. B.B. E.M. Mrs. Collins, Fairview, Haytown, Bulkworthy, Holsworthy, Ph. Milton Damerall 465

Westward Ho! and Bideford. Holiday caravans near the sea or on quiet farm site. Spacious holiday flat sleeps six. Mr. Cockram, 3 Lansdowne, Bideford. Tel: 5215

Northam. Superior fully equipped bungalow annex overlooking river Torridge. Pleasant, peaceful surroundings. T.V. Sleep 4 5. Mrs Fletcher, "Millstone", Limers Lane. Northam 810 2183

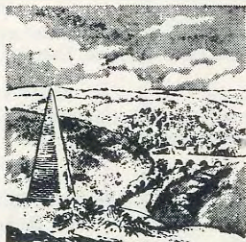
Whilst every care has been taken in compiling this guide, and the statements contained herein are believed to be correct, the publishers and the promoters of this publication will not hold themselves responsible for any inaccuracies.

TRIPS BY CAR, COACH, 'BUS and BOAT through the lovely Devonshire Countryside

To **BUCK MILLS**, a delightful cliffside village, off the main road to Clovelly.



To **WEARE GIFFARD** in the Torridge Valley, famous for strawberry teas.



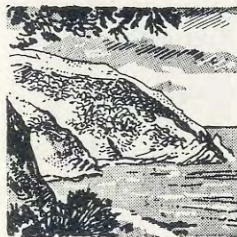
To **TORRINGTON** for a really enchanting view of the surrounding countryside from Castle Hill.



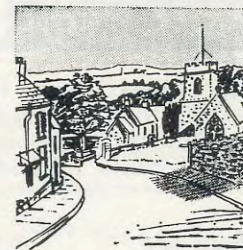
To **HARTLAND QUAY** and Lighthouse for magnificent coastal scenery that will take your breath away.



To **HUNTERS INN** and Exmoor and the lovely Woody Bay. Miles of moorland, a delightful inn. Return via Ilfracombe.



To **LUNDY**, the fascinating little island, by boat from Bideford or steamer from Ilfracombe.



To **ABBOTSHAM**, a pretty village only two miles from Bideford.



To **CLOVELLY**, and its world-famous cobbled street. This cliffside village is unique in its appeal.



To **PARKHAM**, 7 miles from Bideford. The ancestors of John Gay, who wrote *The Beggar's Opera*, lived at Goldworthy, a hamlet, 1 mile from Parkham.

To **DARTMOOR** through Hatherleigh, Moretonhampstead, seeing the prison, and on to Torquay. Return through Exeter.



To **LYNTON** and **LYNMOUTH** — a most enjoyable run to the scene of the tragic floods and to see the wonderful transformation now.



Tourist Information



Local Authority—Torrige District Council, Town Hall, Bideford.

Rail Connections—From Barnstaple, with restaurant coaches on most trains

Coach—Southern National services to all areas and express coach service to London with connecting services to Midlands and M4 and M5 motorways.

Electricity—240v AC supply.

Weather—Prevailing wind is south-west.

Annual average sunshine, 1,700 hours.

Education—Grenville College (day and boarding, boys)

Shebbear College (day and boarding, boys)

Edgehill College (day and boarding, girls)

Stella Maris Convent (day and boarding, girls)

} All Private

Health Centres—Bayview Road, Northam; Bude Road, Holsworthy;

Abbotsham Road, Bideford; New Road, Torrington.

Libraries—Bideford, Northam, Holsworthy, Torrington.

Markets—**Pannier**: Bideford, Tuesdays and Saturdays, mornings.

Holsworthy, Wednesdays, all day.

Torrington, Thursdays and Saturdays.

Cattle: Bideford, Tuesdays.

Holsworthy, Wednesdays and Thursdays.

Places of Worship—District served by most denominations.

Early Closing—Wednesday: Bideford, Torrington.

Tuesday: Holsworthy.

Museums—Holsworthy: Manor Offices.

Appledore (Odun Road): Maritime Museum.

Torrington Town Hall.

Farm Museum: Luxton, Chilsworthy.

Citizens' Advice Bureau—Bridgeland Street, Bideford.

Entertainment—The Plough Theatre, Torrington;

The Strand Cinema, Bideford;

Beaford Centre — the Orchard Theatre;

Westward Ho! Follies. (See local papers for daily events).

Torrige Souhaite la bienvenue à tous les visiteurs continentaux et Espère qu'il leur passeront un séjour agréable dans notre région.

Road Safety

In the interest of Road Safety we appeal to visitors for special care on our roads and narrow lanes, especially in view of the amount of horse riding, pedestrians and children who are on the roads and lanes here at holiday times.

RAMBLES—TORRIDGE DISTRICT

Bideford: Walk along Torrige Estuary—Appledore.

Clovelly: Hobby Drive and Mouthmill Cove.

Hartland: Quay—Hartland Point.

Torrington: Castle Hill and Torrington Common.

Westward Ho!: Kipling Tors and Abbotsham Cliffs.

Local Town Trails available.

National Footpath—passes through district.

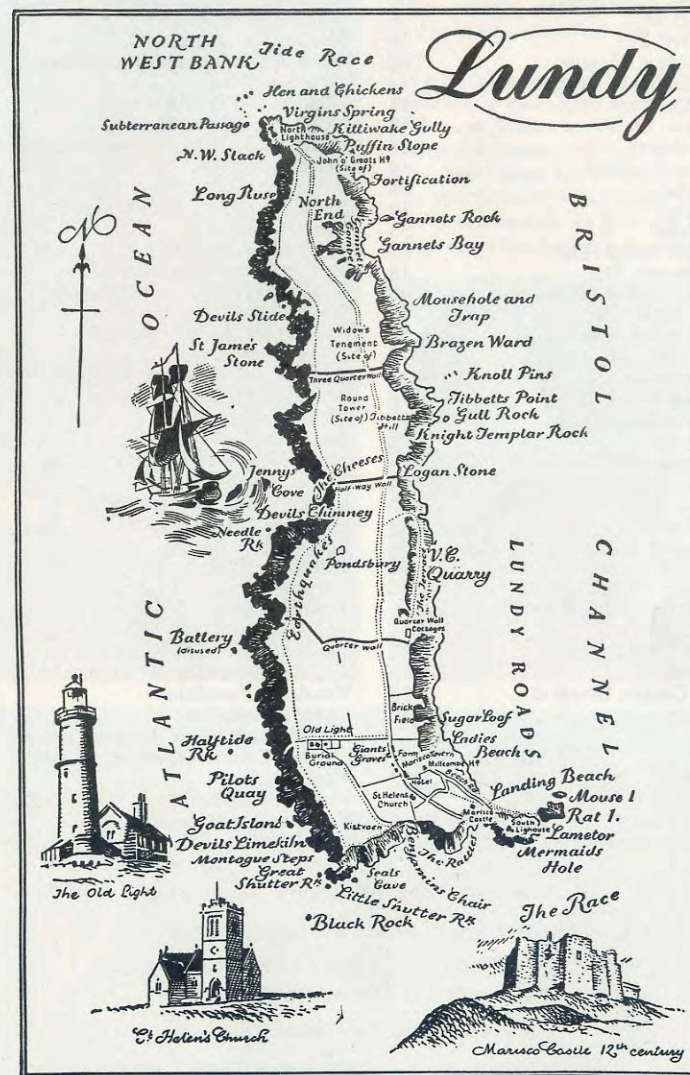
FOR THE NATURALIST

The district abounds with wild life from the woodlands to the coastal crags. There are many organised nature trails together with many fine coastal and country footpaths.

Photo copy supplied by:

Mrs I. Windridge, Barnstaple
Mrs F. Webber, Barnstaple

Mr A. C. Littlejohns, Bideford
Estate Publications, Rushton Smardon, Ashford, Kent



INDEX

Adams, Peter, and Company ..	18	Knapp House	60
Anchorage Hotel, The ..	12	Kumba Guest House	35
Appledore Holiday Letting Agency	39	Lenwood Country Club	40
Armstrong Caravans	33	Little Burrough, Guest House ..	38
Atlantic Sands Trailer Park ..	27	Mandalay, B&B	45
Babb, Mrs, Flat	45	Manor House, The	22
Beacon House, Apartments..	26	Marchwood House Holiday Flats ..	38
Beaconside, Hotel	34	Martins Holidays Ltd	32
Beaford Centre, The	26	Mount, The, Hotel	33
Bideford Building Society ..	42	Need, Mrs, Flats and Bungalettes ..	25
Bideford Chamber of Commerce ..	11	New Inn Hotel	36
Boot, Alan, Caravans	25	Nickels, Mrs D., BB/EM	45
Bowcock, Ann, Flats	19	Nook, The, Guest House	33
Bradbourne House	33	Northam & District Chamber	
Bradford, Mrs R., Flats	44	of Commerce	15
Buckleigh Pines	36	Patio Pool, The	18
Burrough Farm	39	Pines, The, Flats and Flatlets ..	14
Castle Hill Hotel	33	Riversford Hotel	43
Chantry Guest House, The ..	25	Roker, Mrs, BB/EM	45
Coach and Horses, The	18	Roslyn Caravan Gardens	13
Cockram, Mr, Caravans/Flat ..	46	Rosskerry, Hotel and Restaurant ..	37
Collins, Mrs, BB & EM	46	Royal Hotel	23
Commodore Hotel, The	17	Sandymere Holiday Bungalows ..	13
Dartington Glass Ltd	41	School Pictures Ltd	38
Deerhurst Caravans	29	Sealy, Mrs E., Holiday Cottages ..	38
Durrant House Hotel	16	Smytham Guest House Caravan	
Edelweiss, The, Hotel	43	& Camping Park	45
Edgehill College	20	Sonnenheim Private Hotel	29
Edgehill Flatlets and Chalets ..	26	Southcott House, BB/EM	45
Fletcher, Mrs, Bungalow	46	Star Holidays	59
Foad, S. BB & EM	45	Sunny View Caravan Park	58
Gaysands, Flats	43	Sunray Caravan Gardens	36
Great Torrington Swimming Pool ..	36	Sunset Guest House	19
Greenways Valley Caravan Park ..	60	Tanton's Hotel	34
Gresham Court, Flats/Caravans ..	45	Torrige District Council	28
Heard, Mrs, BB & EM/Self catering	45	Tresillian Hotel	12
Hearn, Mrs, Caravan	46	Trew Farm	44
Holbrook, Mrs, BB & EM	45	Turner, Mrs F., Holiday Cottage ..	45
Hooper, Chalet	45	Tyrolean Beer Garden, The ..	14
Information Centre, Bideford ..	28	Wearland, Farmhouse	
Jewell, Chalets	38	Accommodation	45
John Fowler		West Pusehill Farm Holiday Cottages	21
Holidays	<i>Inside Front Cover</i>	Western Counties Building Society	24
Johns & Sons	37	Westlake, Flat	45
Kendall-Anchorage, Mrs J., B&B ..	45	Woodford Bridge Hotel	<i>Inside Back Cover</i>
Kingsland Stables	45	Yatman, Mrs, Caravan	45
Kingsley Leisure Club	56/57	Yeoldon House, Hotel and Restaurant	44

Torrige and District Publicity Association

Official Guide to the Torrige District

*Designed and Produced by Tony Corbett Advertising
and Printed by Devon Print Group*

Published by the Association

All communications to the Publicity Officer

Torrige District, Town Hall, Bideford. Telephone Bideford 2094

A Variety of Coast and Country Pleasures



If you want to do more than sit on a beach and sunbathe then Torrige is the place for you.

It's a paradise for walkers and ramblers, particularly the rugged Hartland point region with its majestic scenery.

Seekers of history will find that almost every town and village has something of interest.

The sportsman too has plenty to interest him and in this section we give you a small selection of the further attractions of Torrige.



Glorious Devon, at its glorious best.



Golf There are nine hole courses at Torrington and Holsworthy and the Royal North Devon course at Westward Ho is one of the greatest in the world where visitors are warmly welcomed. This imposing 18 hole course is in superb surroundings and presents fascinating natural hazards like dykes and clumps of great sea rushes and mobile hazards which are sheep owned by the "Potwallopers" (the commoners) which keep the turf so short on the approaches that it does not need mowing.



Hunting There are several packs throughout the area.

Boating The river Torridge provides a variety of boating opportunities. There are excellent sailing facilities and the North Devon Yacht Club will provide information. Motor Boats can be hired for trips down river to the estuary of the twin rivers Taw and Torridge. Nothing is more pleasant than a trip up river on the incoming tide to Wearie Gifford, home of Tarka the Otter, for a picnic on the river bank, returning on the outgoing tide.



Glorious Devon, at its glorious best.

Fishing As you would expect you can fish along the whole coast from rocks or beaches with rod and line.

Westward Ho and Greysand Point are popular spots and in the evening when the tides are suitable, fishing for Bass long into the night is a favourite pastime from Bideford Bridge.

You can hire a boat and fish for cod, bass and mackerel in the estuary off Appledore and in Bideford Bay. Trips can always be arranged if you contact the Fishing Tackle Shop. Golf Links Road, Westward Ho.

The Torridge is famous for its salmon, trout and sea trout.

Salmon fishers may be seen at work with their long nets in the Bridge pools at low tide or perhaps working from one of the sandbanks at other points in the river and estuary.

Licences are issued by the South West Water Authority but visiting anglers should make enquiries because considerable stretches of the Torridge, Yeo and other rivers are preserved by clubs or riparian owners.

The angler on holiday has yet another choice in Torridge. Fly fishing is excellent in the

Jennetts and Gammaton reservoirs. Permits and tickets are obtainable from SLC Torridge Fly Club Bideford and the Fishing Tackle Shop Westward Ho.

Riding Pony riding stables in the Westward Ho area cater for visitors.

Cricket There are regular matches throughout the summer at Westward Ho and Bideford. Tennis Courts and Bowling Greens are available throughout the district.



Waterfall at Speke's Mill



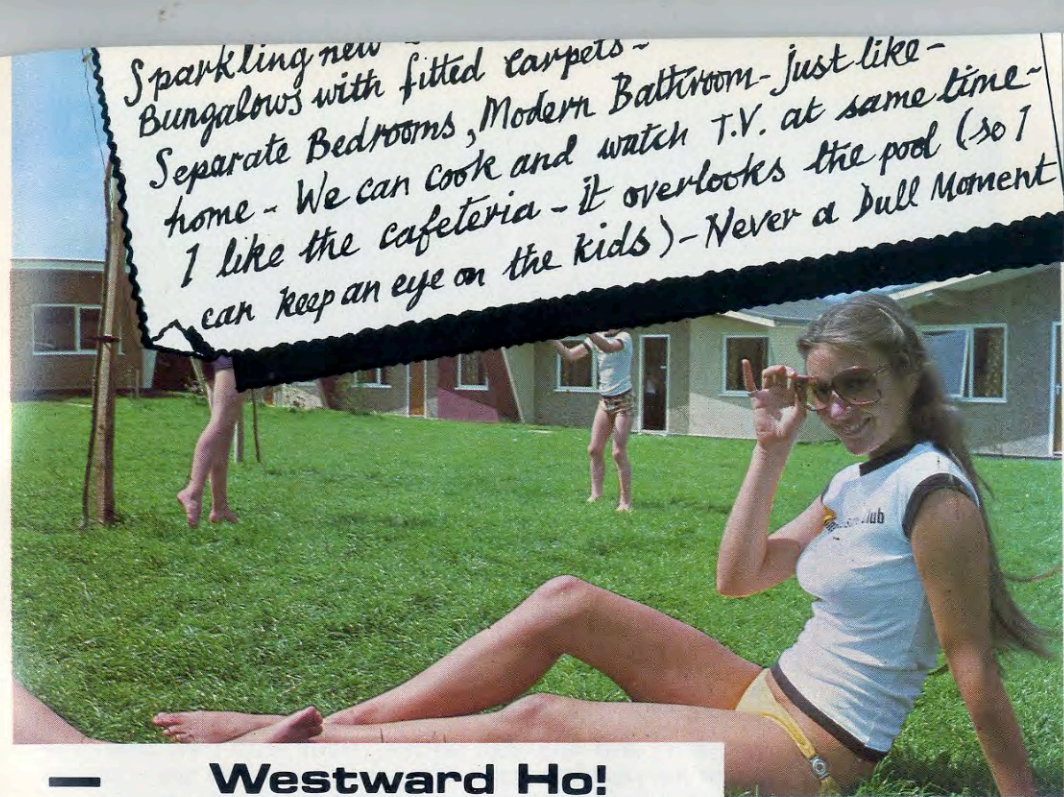
**Kingsley Leisure Club
Holiday Complex with**



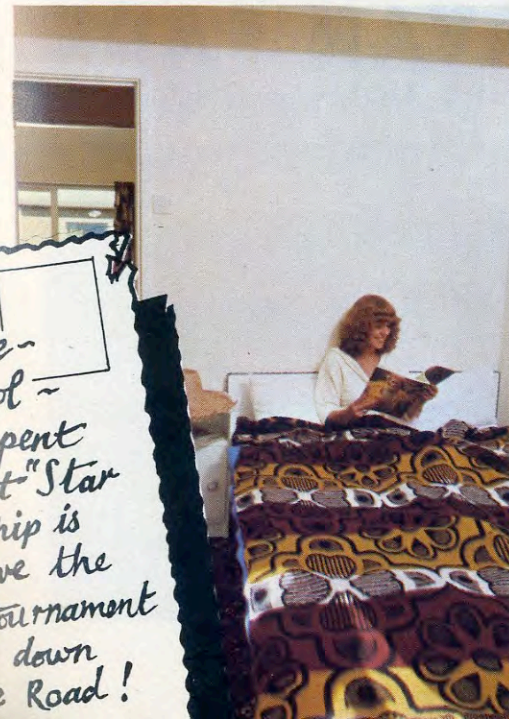
POST CARD

FROM
KINGSLEY LEISURE CLUB,
GOLF LINKS ROAD,
WESTWARD HO!
TEL. BIDEFORD 77233

Having a marvellous time -
Swam all day in the Heated Pool -
Sunbathed on Terraces - Spent
evening in the Ballroom at "Star
Cabaret" and club membership is
open to everyone - Kids love the
Discos - Dad won the Pool tournament
- the Beach is just down the Road!



**— Westward Ho!
Self Catering Bungalows**





Enjoy your holiday at **SUNNY VIEW
CARAVAN PARK**

GOLF LINKS ROAD, WESTWARD HO! Tel. Bideford 3848

Minutes from
Sea, Sands and
Shops, Tennis,
Golf, Putting,
Cricket and
Riding Stables.

All mod. cons.
Camp Shop.
Licensed Club.
T.V. Room.

SAE for
Coloured
Brochure from:
Mr J. W. MARTIN



Superior holiday chalets and large luxury caravans, well equipped including colour television, own flush toilet, electric light and fire, refrigerator and full size gas cooker, water direct to sink unit and mains drainage, hot water and some units with own shower. The chalets and caravans are situated on our private park with showers and fully equipped launderette. Plenty of open space, with a sand-pit and paddling-pool provided for the children. The sea front, with miles of golden sand, safe bathing and surfing, shops, bus stop, horse-riding and the golf course are all within a few minutes walk. Dogs not permitted, cleanliness assured.



Book with 'STAR', real value at competitive prices.

Please send for free fully illustrated colour brochure of Chalets and Caravans to:

★ **STAR HOLIDAYS** ★

DEPT T.G., GOLF LINKS ROAD, WESTWARD HO!, DEVON, EX39 1HF
Telephone Bideford (023-72) 2238

GREENWAYS VALLEY HOLIDAY PARK

TORRINGTON NORTH DEVON

Tel: Torrington 2153

Far from the madding crowd yet close to all the main attractions, Greenways Valley makes an ideal centre for your holiday in Torridge. Small, quiet and secluded, the Park affords delightful views across the beautiful Devon countryside. Our detached 2 bedroomed bungalows are fully self contained (even TV) and are among the very best in the country. All our caravans have a wc, electric light, TV and fridge.

Free heated
Swimming Pool

★ ★

Adventure
Playground

★ ★

Close Fishing
Riding Golf

★ ★

Please send stamp only
for colour brochure to
Mr and Mrs M.D. Preston

Touring Caravans
Welcome



Enjoy a carefree, family holiday at

Knapp House

50 acres of lawns, woods,
fields with outdoor swimming pool.

- * Flats, caravans, touring caravans and campers.
- * Pool room
- * Games room and play area for children
- * Tennis court
- * Friendly club bar
- * Magnificent walks along the river, pets welcome
- * Pony riding and trekking can be arranged
- * Situated between Appledore and Bideford.

Write or phone Bid 4804 Churchill Way, Northam, North Devon

A.A.★ ★ ★ R.A.C.

Resident Proprietors Mr. and Mrs. R. M. Vincent

Woodford Bridge Hotel

MILTON DAMERELL — DEVON

BRITISH TOURIST AUTHORITY COMMENDED
ASHLEY COURTNEY EGON RONAY RECOMMENDED



The Woodford Bridge Hotel is an original 15th century country inn set in the heart of glorious Devon. Although all of the old character has been retained, including log fires in two of the lounges, it has been sympathetically brought up to today's high standards. Even in the most inclement weather the private and public rooms are warm and cosy and the indoor heated swimming pool and sub tropical gardens provide a continual source of interest during the day. Also available are two squash courts, one with a glass back for tournament play and a solarium and sauna for the ladies. Our famous restaurant is obviously available to all of our guests and it is possible to take advantage of the special reduced winter rates.

For further details please write or ring (040 926) 252