

R. Blackmore

and Sons

Auctioneers

Valuers

House and

Estate Agents

REMOVAL CONTRACTORS
AND WAREHOUSERS

Bideford, N. Devon

Telegrams : Blackmores, Bideford. Tel. 55



Official Guide to -

**Westward Ho! Northam
& Appledore**

FOR FAMILY HOLIDAYS

Telephone :
NORTHAM 171

Doungaton PRIVATE Hotel

Westward Ho!



First Residence Built 1750 Still Going Strong

First Rate Service First in Guide

Write FIRST to Us for Terms!

SUMMER OR WINTER



Ennisfarne Hotel

A.A. and R.A.C. Approved

WESTWARD HO!

Delightfully situated facing the Sea and adjacent to Promenade. The Hotel is comfortably furnished and has hot and cold running water and gas fires in most of its very attractive bedrooms. Service and Cuisine are of the best. Home-grown and local produce used extensively. Hard Tennis Court and Putting Green in grounds.

Write to the Resident Proprietors for—

ILLUSTRATED BROCHURE

Terms : Spring from 4½ Gns., Summer from 6 gns.

Telephone and Telegrams : Northam 445



THE DORMY HOUSE HOTEL

WESTWARD HO !

ADJOINING ROYAL NORTH DEVON GOLF CLUB
 Take a holiday where you can find Golf on your doorstep : Sea
 Bathing within easy reach. Good Food and every modern
 comfort, including a large Games Room and Cocktail Bar.
 Phone : Northam 288



ROCKINGHAM HOTEL

WESTWARD HO ! N. DEVON

A delightful position overlooking sea and Royal North Devon
 Golf Course, and standing in over 2 acres own grounds with
 lawns, kitchen gardens, etc. On main bus route. All rooms
 comfortably furnished with h. & c. all bedrooms

For Tariff apply to Resident Proprietors : Mr. and Mrs L. H. Podger
 Telephone Northam 398

HIGHFIELD MANOR

NORTHAM



A small, intimate Country Hotel, charmingly
 furnished and with every modern comfort, yet
 definitely old - fashioned in its emphasis on
 hospitality. Standing in its own grounds of over
 seven acres midway between Westward Ho !
 and Appledore and 1½ miles from Bideford, the
 hotel enjoys one of the finest views in North Devon
 over Bideford Bay and the Taw-Torrige Estuary.

*Excellent Cuisine. Own Garden Produce
 Pleasant Lounges, Billiards and Games Room
 Interior Spring Mattresses. H & C all bedrooms*

Golf (Royal North Devon Course), Fishing,
 Sailing and Surf Bathing may all be
 enjoyed in the immediate vicinity.

*Tariff from 6½ to 9½ gns.
 according to season*

TELEPHONE & TELEGRAMS: NORTHAM 563

Belle Vue Hotel

BUCKLEIGH, WESTWARD HO!

Telephone: Northam 468

Lovely secluded grounds, with grass Tennis Court, Lawn and Gardens
Excellent cuisine and service. Separate tables.

H. & C. and spring interior mattresses in all bedrooms. Garage.

Reasonable inclusive terms. No extras.

Brochure on application



ATLANTIC VIEW

Overlooking sea with lovely marine views
Terms moderate *Personal Service*
Open year round



**KINGSLEY TERRACE
WESTWARD HO! N. DEVON**

Telephone :
Northam 300/427

Telegrams :
Northam 300/427

A.A. and R.A.C.



CLEVELANDS HOTEL NORTHAM

Station : Bideford (Southern Region)

Beautifully appointed Hotel with Glazed-in Verandah, facing South—veritable Sun-trap. Lovely Grounds and Gardens, with magnificent view. Central Heating. Hot and Cold Water in every Bedroom. Unusually good Food. Own Farm and Garden Produce. Excellent Bus and Train Services.

"Ferndale Hotel" *Board Residence*

WESTWARD HO !

MODERATE TERMS FACING SEA
BED AND BREAKFAST

Proprietress - - Mrs. A. M. PETHICK
Tel. Northam 196

The Eversley Guest House

WESTWARD HO !

Eversley House is situated in an ideal position, to Golf Course and Tennis Courts, 2 minutes from Sea, Putting Green, Church, P.O. and Shops. Secluded sunny Garden.

Telephone : Northam 283. Station - Bideford

Under personal supervision of the Owners—
Mr. & Mrs. W. H. ALEXANDER

WESTWARD HO !

SUNSET HOUSE, MAIN ROAD

Standing in Own Grounds overlooking Sea.

Beach Five Minutes. Full Board 4½ and 5 gns.

Good Table and Comfort. V. HART

'FOSKETH HOUSE'

WESTWARD HO !

5 minutes Sea, Buses, Shops. Good Food. Comfortable Beds
Personal Attention

Proprs. : Mr. & Mrs. E. R. HUMPHREY

Taxi Service any Distance 'Phone : Northam 483

DUART HOTEL

BIDEFORD

Recommended
A.A., R.A.C.

Telephone
Bideford 524



The Ideal Holiday Hotel situate in 3 acres of beautiful grounds. Magnificent views from all rooms. Excellent centre for famous beauty spots of Devon and Cornwall.

GOLF, FISHING, BATHING, YACHTING, ETC.
H.C. ALL BEDROOMS. CENTRAL HEATING
COMFORTABLE LOUNGES FARM PRODUCE

Brochure sent on request

OPEN ALL YEAR

Seafield House

Westward Ho!

The Ideal Holiday House

Overlooking the Sea with Private Steps to
to Beach. Eleven Bedrooms nearly all
overlooking Sea. Central for well-known
Beauty Spots.

Children Welcomed

Good Food and Accommodation

Moderate Charges

Telephone : Northam 568

Proprietress : Mrs. L. WARE

YOU WILL HAVE A GRAND TIME
AT

WESTWARD HO!

AT THE

AGNELLA

GUEST **KINGSLEY TERRACE** HOUSE

OVERLOOKING BAY CHILDREN WELCOMED
CLOSE SANDS AND GOLF COURSE

Please write for Brochure :—

Mr. and Mrs. W. G. LATTER

Telephone Northam 499

Deoldon Hotel

NORTHAM



A beautifully appointed Country House standing in
8 acres of grounds overlooking Torridge Valley.

Ideal holiday centre within easy reach of the sea.
Swimming, Fishing, Sailing, Golf, Riding, etc.
Excellent Cuisine Own Produce
H. and C. all Bedrooms Central Heating

OPEN ALL THE YEAR

Telephone and Telegrams :
Northam 400

Resident Proprietors - Mr. and Mrs. W. A. MANSELL

"ULVIK"
WESTWARD HO!

CLOSE SANDS
Every Comfort. Highly Recommended. Colonial Cuisine
M. V. Kidson (Mrs.)

Telephone : NORTHAM 515

"Point Garry" Guest House

Three minutes from and overlooking Sea
Highly Recommended. Write for Brochure
Proprietors : Mr. & Mrs. B. G. HILDER

TRESILLIAN
RALEIGH HILL, BIDEFORD
NORTH DEVON

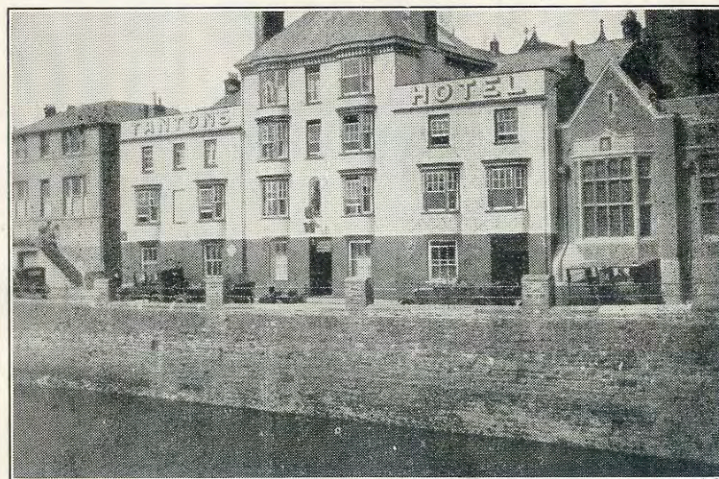
Guests Welcome. Country or Seaside Holidays
Personal Supervision. Moderate Terms
BIDEFORD 347 (Mrs. L. A. Grogan)

KIPLING GUEST HOUSE
WESTWARD HO!

Finest unrestricted marine views in the district
Three Minutes from Golden Sands
PERSONAL SUPERVISION GARAGE
FULL BOARD, BED & BREAKFAST, SEPARATE TABLES
Telephone : Northam 420 Mr. & Mrs. E. J. LOCOCK

TANTON'S HOTEL
BIDEFORD

Facing the River and the Old Bridge



A Fully Licensed Free House of comfort and charm. H & C all bedrooms. Three Lounges. Delightful Dining Room. Cocktail Bar.

GOOD CUISINE AND SERVICE

A.A. Telephone 94 R.A.C.

Be sure to visit

Ennisfarne Restaurant

AND

Tea Garden

WESTWARD HO!

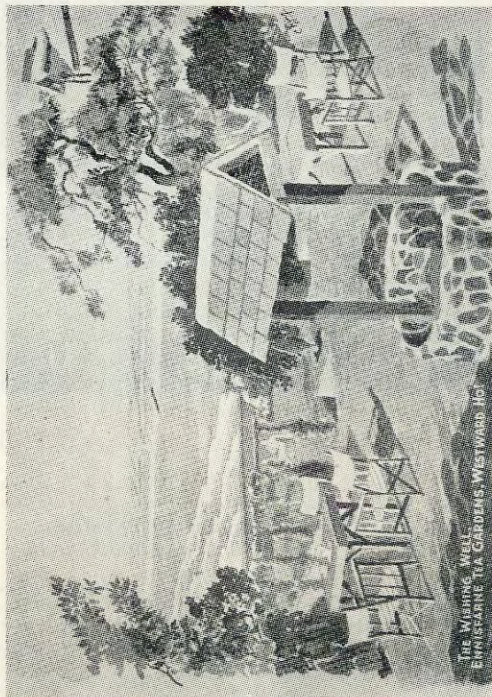
Open daily 10 a.m. to
11 p.m. for all meals, etc.

Large Free Car Park

Come and listen to the
ENNISFARNE

TRIO

who play in the Restaurant
on Monday, Tuesday, Wed-
nesday, Thursday and Friday
evenings, 8.30 to 10.30
during the season



THE WISHING WELL
ENNISFARNE TEA GARDENS, WESTWARD HO!

Westward Ho! Northam and Appledore



OFFICIAL GUIDE

Issued by Authority of the
Northam Urban District
Council in conjunction
with Northam and
Westward Ho!
Chamber of
Commerce

*Visitors or intending residents
requiring further information about
any of the three resorts mentioned
in this handbook should write to:*
**PUBLICITY OFFICER,
COUNCIL OFFICES,
NORTHAM, NORTH DEVON**

GAZETTE PRINTING SERVICE
5, GRENVILLE ST., BIDEFORD
Telephone Bideford 777

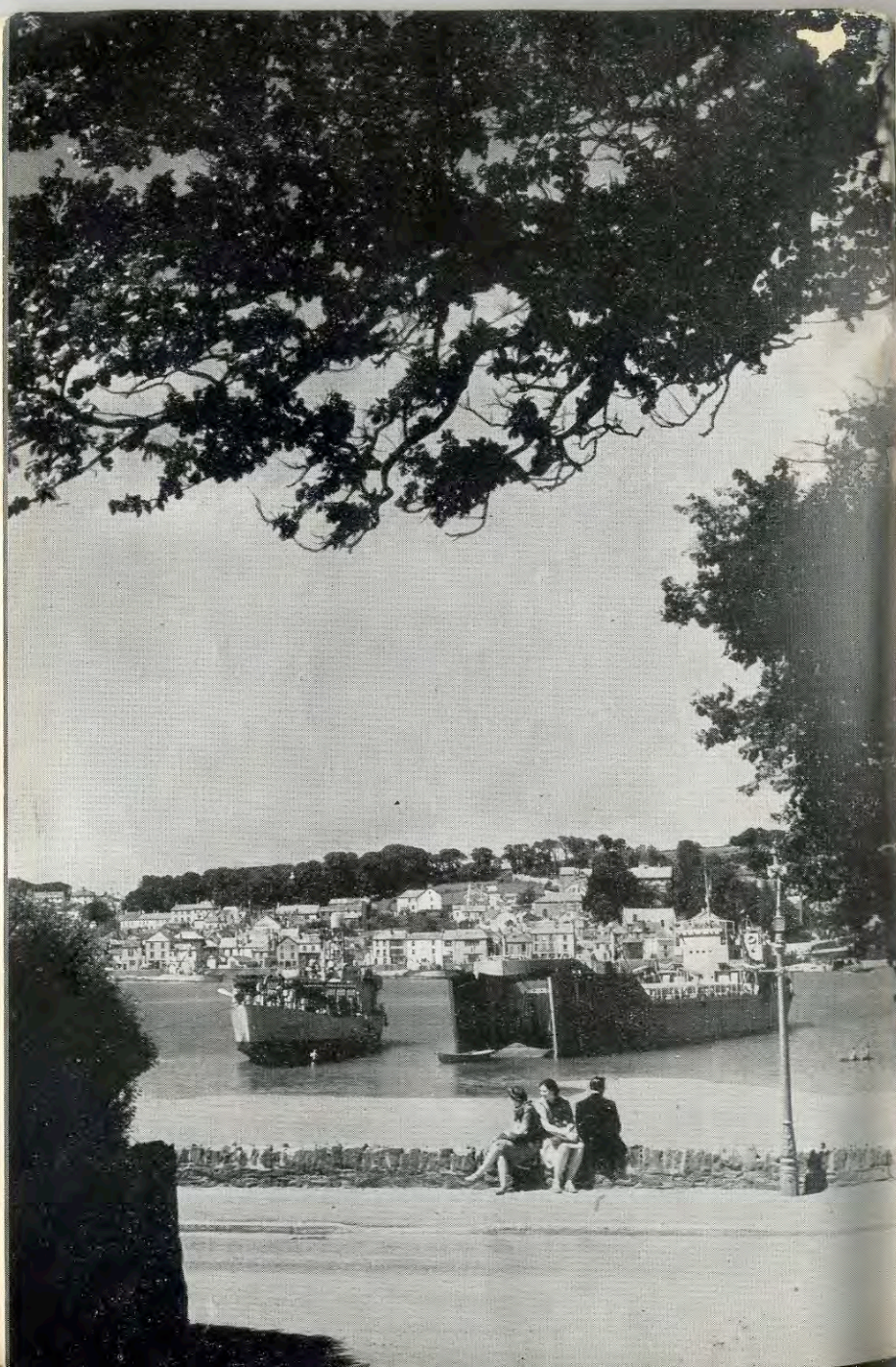
Printed in Bideford, Devon, England

CONTENTS

(Illustrations in Italics)

	Page Nos.
<i>Enjoying themselves at Westward Ho !</i>	Frontispiece
<i>The Spirit of Appledore</i>	16
INTRODUCTION	17
<i>Chanter's Folly and Sunken Wreck at Westward Ho !</i>	18
HISTORICAL—from Bronze Age to Present Day	19-21
<i>United Services College Buildings, Westward Ho !</i>	20
<i>The Spirit of Westward Ho !</i>	22
WESTWARD HO ! SECTION	23-25
<i>Choice of Scenes</i>	24
<i>Aerial photo of Northam shewing plan of Golf Links</i>	26
NORTHAM SECTION	27-31
<i>Northam Interest Photos...</i>	29
<i>Promenade Front and Swimming Pool, Westward Ho !</i>	30
<i>Appledore, showing docks, quayside and Appledore West</i>	32
APPLEDORE SECTION	33-36
<i>Quayside seats, Appledore</i>	34
<i>Sailing race from Appledore front</i>	35
<i>Marine Views from Appledore</i>	37
EDUCATIONAL SECTION	38-39
" AT-A-GLANCE " SKETCH STREET PLAN	centre fold
ROAD MAP TO SCALE for surrounding area	centre fold
<i>The Famous Fifth Green, Sand Yachting and Cricket</i>	42
SPORT AND RECREATIONAL SECTION	43-49
<i>Kipling Tors Walks, Westward Ho !</i>	50
ATTRACTIVE WALKS SECTION	50-51
<i>The Spirit of Bideford</i>	52
" TRIPS ROUND THE AREA " SECTION	53-55
<i>High Street, Clovelly</i>	53
<i>Seas at Hartland Quay</i>	55
Books of local interest	57
General Notes	59
A B C GUIDE TO LOCAL ACCOMMODATION and Trading Services (as advertised in the Guide)	74-76





By way of introduction . .

“ *NICE DAY for a sail, zir-r* ”
 . . . and in that open invitation, with its honest Devon burr, one has the direct answer to your holiday or residential problems.

Come Westward . . . to the intriguing trio of resorts—Westward Ho! Northam and Appledore—each entirely different in appeal, but united on a common peninsula, bounded by the Atlantic Ocean, the Estuary and a broad River.

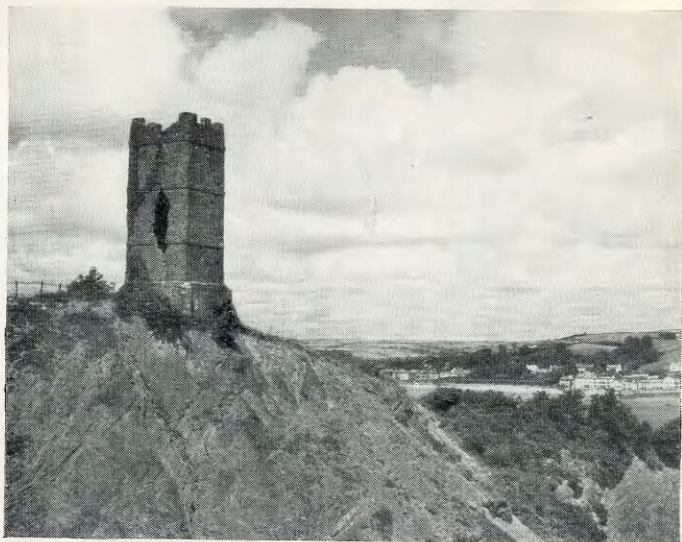
This corner of Devon gave inspiration to the British Railways to run from Waterloo the “ Atlantic Coast Express.” This has no serious rival because here is the only part of England which faces America direct.

On the front page of the cover, there is the resemblance of an old sea chart, and readers would do well to remember that it was from this peninsula that in Elizabethan days English sea-dogs, immortalised by Sir Richard Grenville who was a native, set forth to champion British freedom, to bring trade and glory to the homestead, and to be amongst the earliest settlers in America.

Go back a little farther, and you have authentic record of the death-blow struck by the Britons of this self-same peninsula on Hubba the Dane, when he dared to invade these shores from his boats.

Here then is history ; romance ; pleasing countryside and seascape ; clean surf and sand beaches ; bracken slopes where Kipling schooled and Kingsley wrote ; sand dunes where duck can be shot, and later in the day championship golf played ; a seaside front with modern hotels, or a quay-side port with quaint streets and ancient hostelry that wed welcome with affection ; Northam’s hill-top tower that is a landmark for ships miles away at sea, and a family people that are proud to share their heritage with you.





CHANTER'S FOLLY, APPLEDORE (See page 44) (R. L. Knight)



SUNKEN WRECK, WESTWARD HO ! (R. L. Knight)

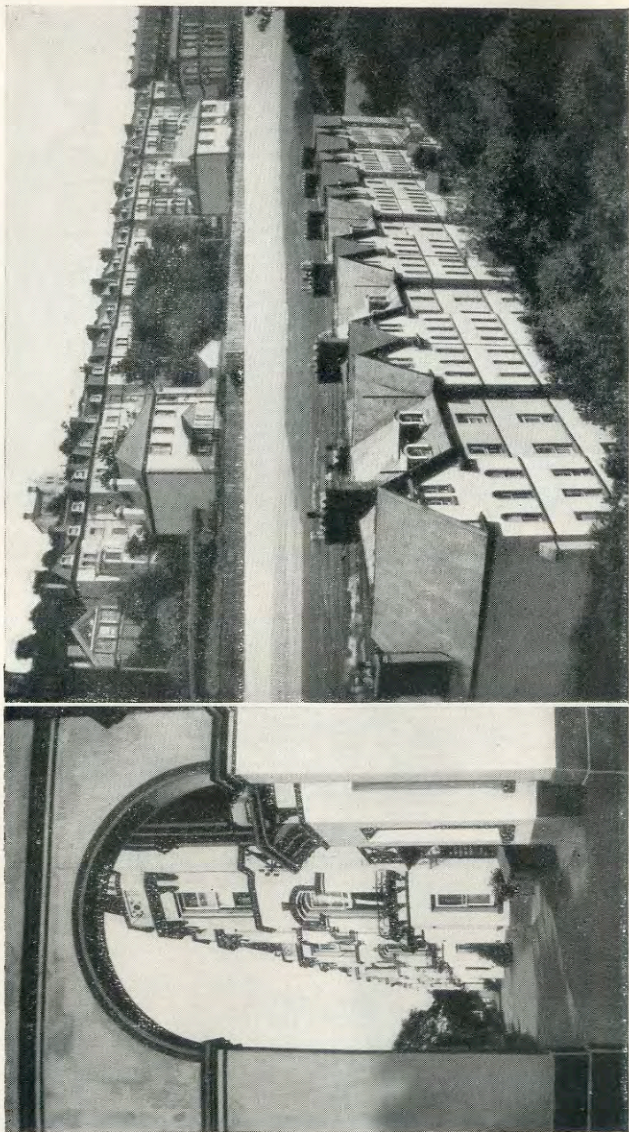
To dive into historical facts, one quickly realises that the Chanter's Folly tower, seen so interestingly from the distance, or the sunken wreck disclosed at low tide at Westward Ho ! might have taken effect but yesterday. Over 3,500 years ago people of the Bronze Age lived here, as has been proved by the recovery during excavations of axe-heads of that time, and though Westward Ho ! itself is of comparatively recent origin, Northam, the name which gives title to the Urban District Council for the area, and Appledore, have a recorded existence of over 1,000 years.

The name of Appledore comes from the Saxon *apuldor*, an apple tree, and that of Northam suggests that the town was the centre of one of the three areas into which Devon appears to have been divided in Saxon times. Northam's history is as old as that of Barnstaple, the oldest borough in the kingdom. It first came into prominence in 878 when King Hubba the Dane, after ravaging and burning South Wales, landed with a fleet of 33 ships near where Chanter's Folly now stands.

The story is (and as confirmed by the Anglo-Saxon Chronicle for 878) that Hubba advanced through Northam to an earth-work stronghold at Kenwith Castle, situated in the valley that geographically divides the Northam peninsula from the rest of the mainland and was in those days swampy. Here the Saxon garrison, under Odun, Earl of Devon, gave battle, forcing the Danes back over the Northam hills to their ships. At Bloody Corner, on the main-road between Northam and Appledore, came the end, with Hubba slain as well as " 800 men with him, and 40 of his army. There was also taken the war-flag, which they called *The Raven*."

It is also recorded that Odun's wife, who followed her husband into battle and threw herself in front to save him from Hubba's double-handed battle axe, was herself slain by Hubba. King Hubba was buried beneath a cairn heaped on the shore over a flat rock near Appledore quay, still called the Hubbastone. A tablet at Bloody Corner recalls :—

" Stop, Stranger, Stop,
Near this spot lies buried
King Hubba the Dane
Who was slain by
King Alfred the Great
In a bloody retreat."



THE OLD UNITED SERVICES COLLEGE, WESTWARD HO ! (The location of Kipling's "Stalky and Co.")

His dead warriors, together with the Saxons slain in the battle, were buried at Bonehill, which is a public prospect just north of Northam's Parish Church, and giving fine views of the sea and estuary.

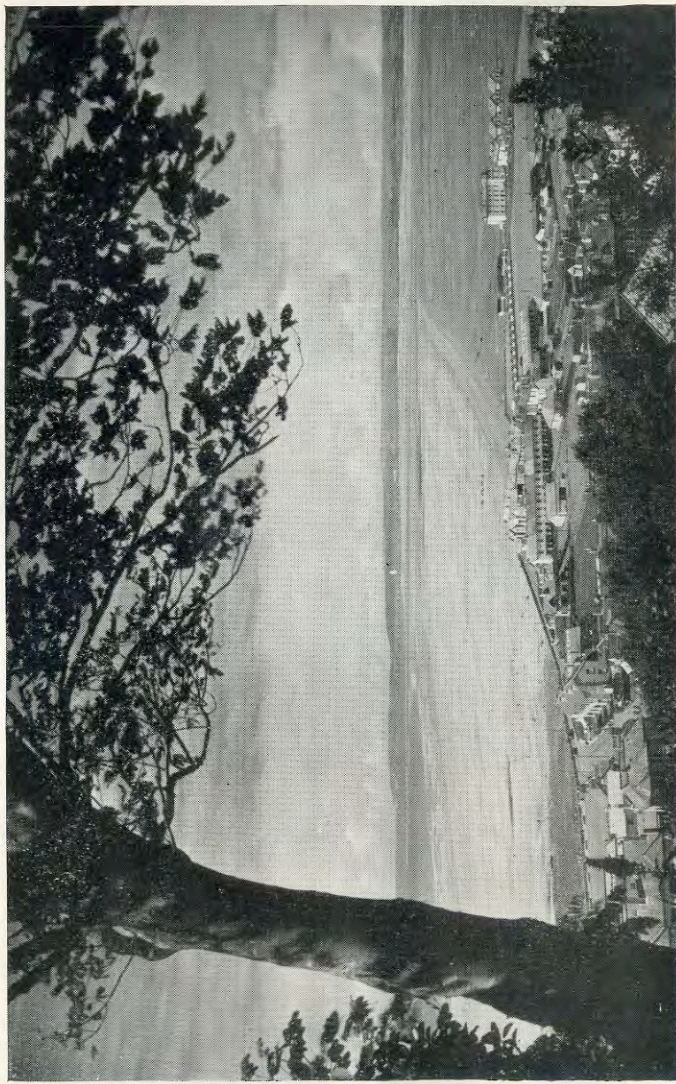
In 1066 the Manor of Northam was given by William the Conqueror to the Abbey of St. Stephen in Normandy, and this, with several other grants, was renewed by Henry I, and finally confirmed by Edward III.

In Elizabethan times, Northam and Appledore played a historic part in fighting the Spanish Armada, building and manning ships that sailed under the command of Sir Richard Grenville from Appledore "Pool," the gathering place for the vessels of the North Devon ports. In the colonisation days that followed, and in the tobacco trade and Newfoundland fisheries trade that developed, the district took its full share of enterprise and adventure.

Ship-building and repairing has continued to flourish at Appledore and remains its chief industry, and great service was rendered during the past two Great Wars. In the last war, Appledore became the home of a naval establishment, and early amphibious experiments for the 1944 invasion beach landings in Normandy began around the estuary here because of the similarity of coastal conditions.

To-day Northam, Westward Ho! and Appledore remain a loyal and devoted people, busy at their shipyards, on their farms, and in catering for visitors and residents, and are served by an able Urban District Council, consisting of (as from this year's elections) five members from the Appledore ward, four from Northam and Westward Ho! wards respectively, and three from the Orchard Hill ward, which incorporates the residential area between Northam and Bideford.

Resident population is 6,509, area 4,391 acres, and rates are at £1 0s. 6d. in the £. There are excellent services for water, gas, electricity, etc., serving the area as a whole. Good, well-connected roads, with excellent 'bus services, give contact within a few minutes of the adjoining market centre at Bideford, and Bideford Bridge, from which starting point there radiates easy access to all other parts of the country.



(R. L. Knight)

THE SPIRIT OF WESTWARD HO !

Westward Ho!



Fathers and mothers with their following of youthful adventurers and explorers will find much to satisfy them at Westward Ho ! which represents the seaside portion of this Guide. Here you have a friendly, casually-laid-out resort, which has only been developed during the past seventy years, and has a name that beckons to the visitor to come and enjoy the freedom of a holiday with the Western sun and the Atlantic health-giving ozone.

The same breath of inspiration that sent local sea-dogs out across the seas to new lands and exciting adventures, will entice young and old down to the miles of firm, golden sands, and the clean, sparkling Atlantic rollers that never cease the surge and roar of their welcome !

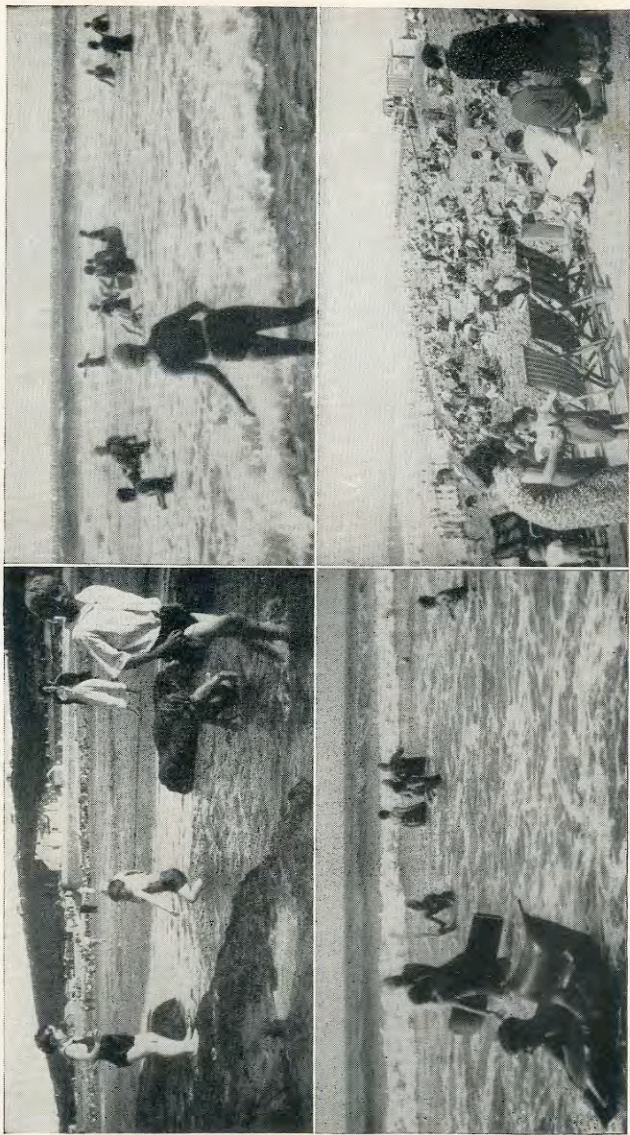
Westward Ho ! withstands all weathers, and has something fresh to say about each day. Each day brings fresh artistic charm to Westward Ho ! From its hillside one thrills in the contrasts of cloud and sunshine effects in sky and sea.

Take a look at the front page of cover and realise that, looking North, you are facing, on the one side the sea and sands, and on the right the expansive common-land, where the Royal North Devon Golf Club have their links.

Dividing the two (*see also opposite page*) and you can see the famous Pebbleridge stretching as far as the eye can see towards the Estuary—a natural barrier between land and sea.

Beyond there is the sweep of hills from East to West, Appledore, Exmoor uplands (in the blue haze), Braunton lighthouse, Saunton and Baggy Point, and as you swing your gaze around you are looking West again, towards the rocky isle, Lundy, and the ships on the Atlantic horizon.

Finally, you arrive South-West, touch land again at Hartland Point, and are gazing up at the gorse-clad, picturesque slopes of Kipling Tors : that is the spirit of Westward Ho !



CHOICE OF SCENES, WESTWARD HO !

(Parry)

It gives the background to Westward Ho ! history and early development. It was here that Rudyard Kipling went to school, at the United Services College, and his school-day stories tell of his adventures on these hills, which have now been taken over by the National Trust and thrown open for ever to the public.

Apart from about two old farms, now converted into boarding houses, the oldest and most interesting from a literary viewpoint, is the old United Services College. Now divided up into boarding-houses and flats and known as Kingsley Terrace, it was where Kipling received his education, and as editor of the school Chronicle began his journalistic writings. Readers of *Stalky & Co.* (Kipling's story of his school life while at Westward Ho !) will be interested to know the location of "Study No. 5." "M'Turk" (the late Mr. G. C. Beresford), author of *Schooldays with Kipling*, has provided reliable information :

"The Terrace of houses is now numbered 1 to 12 consecutively from the sea end, and during the time of *Stalky & Co.* the layout of the college was as follows :—

"The whole top floor of the terrace was used for dormitories, the basement consisted almost entirely of service rooms and servants' quarters, and the three intervening floors were used for form rooms, studies, dining halls, etc. On the first floor of the south side of house No. 3 was 'Study No. 5'—a small L-shaped room which in Kipling's day had walls stencilled by 'M'Turk.' The bay-windowed room on the north side of the same floor was used for the production of the pantomime *Aladdin*—the bay window being used as the stage. Houses Nos. 5 and 6 constituted 'King's' House, around which the most humorous incidents in the story—namely the dead cat episode—were written. 'King's' form rooms were the two ground floor bay-windowed rooms on the north side of Nos. 5 and 6.

"The detached house at the east end of the terrace was the school gymnasium, where 'Foxy,' the school sergeant, drilled Kipling and his colleagues. 'Keyte's' tuckshop was on the south corner of Nelson Road at its junction with Youngaton Road."

It was whilst he was at the college that Kipling wrote *Schoolboy Lyrics*.

On the south wall of the Westward Ho ! Church is a stained glass window in memory of Kipling's headmaster, Cormell Price, and underneath is a brass with these lines of Kipling's after the inscription :—

"Who with toil of his To-day,
Bought for us To-morrow."

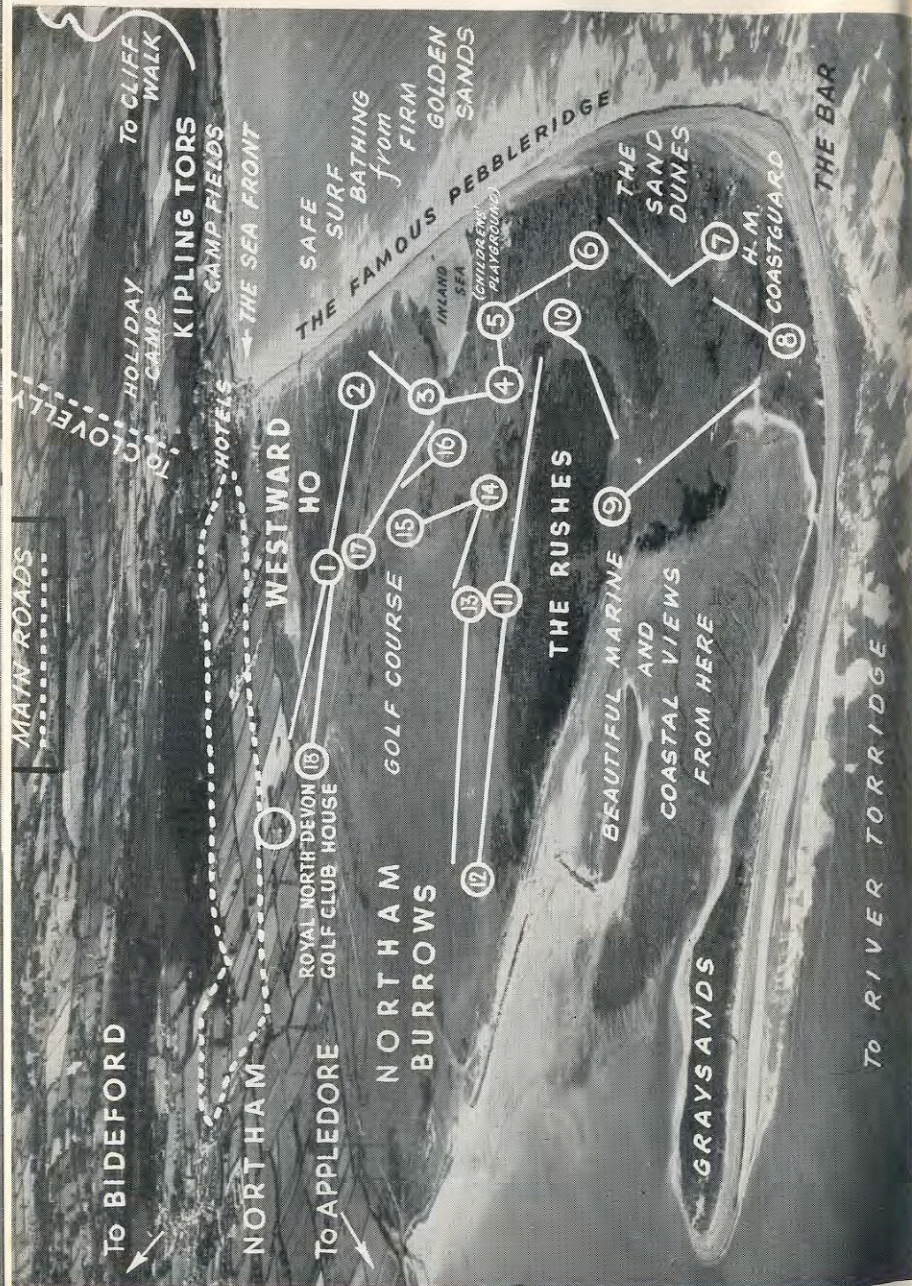
Northam



Northam—the centre of the urban district—is a pleasing and dignified township, with many points of interest. It is about a mile from Bideford, and about the same distance from Appledore and from Westward Ho ! The 'bus routes converge and separate and the main street—Fore Street—provides a parking ground for cars. Close at hand are excellent hotel bars, and accommodation, and it is usual to find a representation of inhabitants of all four places foregathering for social reasons, playing darts, skittles or discussing golf. Golf has been virtually the life-blood topic for Northam since the Royal North Devon Golf Club—the earliest of England's seaside courses—was founded in 1864. The whole village plays golf, and there have been as many as 80 Northam men serving as golf professionals in all parts of the world, from Calcutta to California. Mr. J. H. Taylor, five times open champion and one of the greatest professional golfers of all time, is a native and, though an octogenarian, still plays, respected and loved by all, a tribute to a healthy district, a healthy game as well as to a healthy character.

Hundreds of visitors come down to Northam specially to play on the famous course, which again this year stages a major championship meeting.

Explanation of the golfing importance is NORTHAM BURROWS, a magnificent expanse for the benefit of the people of Northam district, or the "potwallopers" as they are colloquially known, i.e., those who "boil their own pot." As seen by the sketch plan opposite, the course is delightfully situated, surrounded by the sea and river, and the sand-hill slopes designed, as if by providence, to match the skill of champions.



Those who decide to stay in Northam, or in the hotels that immediately surround, have glorious views, and always there is the choice—the seaside, golf, the river, or into the Market Town of Bideford.

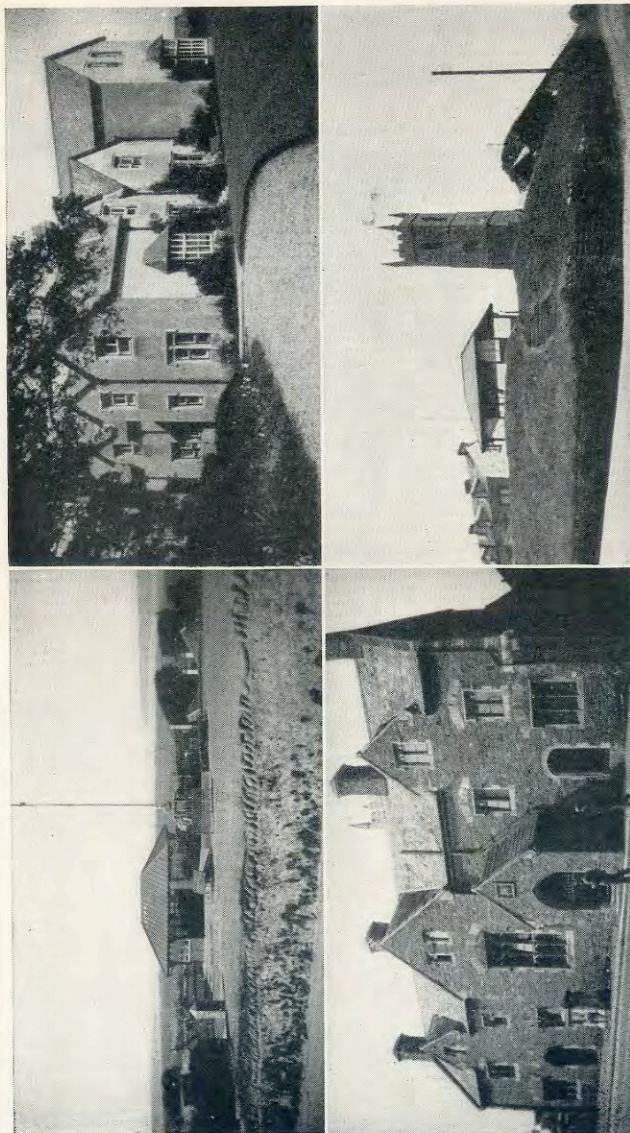
As already mentioned, Northam is historical and romantic. Bone Hill, the public park, has its associations with the invasion of the Danes in 878, and the romance of Charles Kingsley's classic, *Westward Ho!* takes one to the Parish Church to see the burial place of Salvation Yeo (to the West of the Church Tower) to Burrough House, the home of Amyas Leigh, and to note the tall long chimney and several interesting old houses in Cross Street, that hark back to those days.

Amyas Leigh, who came "of as good blood as any in Devon," was the hero of one of the finest adventure stories ever written, and in the Parish Church can be seen the tombs of the Leigh family. The earliest record of the church dates from 1261. During the vicariate of the Rev. H. P. D. Pinhey, M.A., and shortly before the last war, a Kyrie was discovered, written in the 14th century. It was sung in Northam Church at the time of the battle of Crecy. This Kyrie was found round a book of churchwardens' accounts used during the days of Queen Elizabeth and the Spanish Armada. In the churchyard, to the south of the "tall windswept tower," is the grave of Benjamin Rogers—guard of honour to Napoleon at St. Helena.

The following notes by Mr. Eric Parry, a well-known friend of Northam, tell interestingly of "THE ROMANCE OF BURROUGH" (a photograph of which appears on page 29) :—

Most towns would consider themselves fortunate if they could claim association with one famous figure in history, but Northam can lay claim to half a dozen such figures, all of whom were descendants of the same family, their history extending from before the time when Columbus discovered America in 1492 to the battle of Trafalgar in 1805.

As early as the year 1300, the Burrough family lived at Burrough House (now rebuilt), and as far back as their activities can be traced, they led a sea life. In 1553, Stephen Burrough, in a cockleshell of a vessel drawing only four feet of water, went in search of a north-east



(Parry)
NORTHAM INTEREST—BONE HILL PROSPECT, BURROUGH HOUSE, AND TRUST BUILDINGS



PROMENADE FRONT, WESTWARD HO !

(R. L. Knight)



SAFE BATHING, WESTWARD HO !

(R. L. Knight)

passage to China, on which occasion he visited Russia and established a high latitude record which remained unbroken for over 300 years. In recognition of his services, he was made Chief Pilot of England and one of the Four Masters of the Queen's Navy.

Stephen's brother, William, was also a great seaman. His ship was the *Golden Lion*, and he was Vice-Admiral of Drake's fleet which went to Cadiz to "sing the King of Spain's beard" the year before the defeat of the Spanish Armada. As a result of a disagreement with Drake, Burrough was sentenced to death, but not only was he pardoned, but also appointed Controller of Queen Elizabeth's Navy. He married the grand-daughter of the Lord Mayor of London.

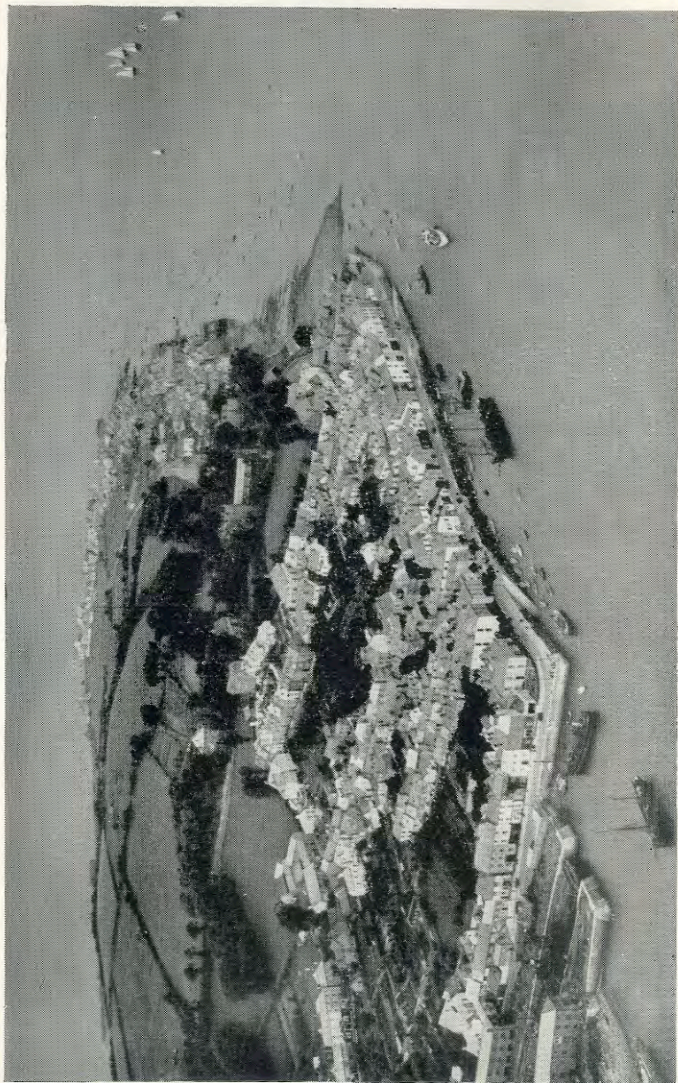
Christopher Burrough, a nephew of William, was a Merchant-Adventurer who went trading to Persia for silk and carpets.

Burrough House then passed to the Leighs, who figure in Kingsley's *Westward Ho !* or the *Voyages and Adventures of Sir Amyas Leigh, Knight of Burrough, in the county of Devon, in the reign of Her Most Gracious Majesty Queen Elizabeth*. The story of Amyas Leigh and his brother Frank is well known to all, but although the tombs of the Leighs are in Northam Church, no record of these brothers has yet been found.

Two hundred years later the Barton family inherited Burrough House. The career of Admiral Barton—the Frenchmen's Terror—is written in naval history. At Anguilla in the West Indies, he destroyed two French warships, with the loss of only one man killed and seven wounded, and in the following year he captured eight French vessels.

His son, Captain Barton, was a midshipman on Nelson's ship, the *Victory*, at the battle of Trafalgar. Coming to more recent times, two sons of Northam were on the *Exeter* during the glorious action of the River Plate.

A more disreputable relative of the Leighs of Burrough was Thomas Benson, the SMUGGLING M.P., who lived at Knapp House, 200 years ago. Although he inherited £40,000 from his parents, Benson preferred an adventurous life. In 1748 he leased Lundy Island from Lord Gower, and then contracted with the government to ship convicts from Appledore to Maryland and Virginia, taking them to Lundy instead ! Benson used the caves of Lundy for his tobacco and other contraband goods, which at last the government seized, along with the paternal estate at Knapp, which they held for the rest of Benson's life. He then heavily insured a ship's cargo, consigned to Maryland, unloaded it at Lundy, and then had the ship scuttled and burned some leagues to the westward. For this, the chief officers of the ship were executed, but Benson escaped to Portugal, where he ultimately died. Benson considered himself to be King of Lundy, and he would fire at any ship which did not hoist her flag in salute when passing the island.



FROM APPLEDORE DRY DOCK TO APPLEDORE WEST
(With a Sailing Race in the Estuary)

(Aerofilms Ltd.)

Appledore



We come now to Appledore—this “little white village,” as Kingsley described it. The romantic setting of this little sea-port of 3,000 souls is soon apparent. With its charming peeps through quaint, narrow cobbled streets, it has stood the test of time.

The wide waters of the Torridge estuary almost surround it, providing unrivalled views of land and water, of pretty sailing yachts, steamships and other craft lying at anchor, while the reflection of clouds and sunshine provides a changing scene of constant beauty. And just across the water, too, is the sweet little village of Instow, with its picturesque jetty pointing towards us, and from which the ferryboat is even now approaching with a party of visitors.

There is as much charm landwards. As a glance at the panoramic view on page 32 will show, interest travels from the first of Messrs. Harris and Sons' dry docks, upwards along the wide quayside, with mysterious and exciting little streets departing left “into the interior”—to be explored later—past the Church until we enter “West Appledore,” which is the portion of Appledore nearest the sea and commands Appledore Pool, where ships can lie safely at anchor at all tides, and where the Lifeboat swings at her moorings in instant readiness to proceed sea-wards.

The quay is always of interest, and leads to many inviting nooks and corners for the discerning artist. Blue-jerseyed seafaring men can be seen chatting about past or present voyages or gazing critically at some incoming vessel. Others are waiting to take visitors for a row or a sail up the beautiful river Torridge, from which the best views of Appledore can be obtained.

In the narrow streets the shops are busy and there is much coming and going, and the frequent arrivals of double-decked 'buses along the front serve to emphasise in contrast the quaint old-world character of Appledore.

Appledore's history goes back over 1,000 years and earlier references have been made to its links with the Danish invasion in 878. Its seafaring associations have led to it being chosen as the location for the making in recent years of the film of *Westward Ho!* and in 1950 of *Treasure Island*. For the last-mentioned film a schooner was converted locally to become the *Hispaniola*.

Between 1700 and 1750 Appledore did a flourishing tobacco trade with the Colonies. Owing to its position and depth of water, it could accommodate the biggest ships of the day.



QUAY-SIDE SEATS

(R. L. Knight)



SAILING EXCITEMENT

(Parry)

The Parish Church, though only 114 years old, is well worth a visit. It contains some splendid and valuable stained glass windows. The large and attractive wooden screen has been fashioned out of the famous old windjammer and sailing ship, the *Marco Polo*. The foundation stone of the church was laid in 1836 and the church was dedicated in June, 1838. The present Vicar is the Rev. H. C. A. S. Muller, M.A., Retired Royal Naval Chaplain.

Nonconformity in Appledore dates from the middle of the 17th century, when religious services were held in a barn. The present church in Meeting Street was built in the middle of last century.

Prince Charles is said to have landed at Appledore when fleeing to Cornwall, and to have stayed at Docton House. This building, which is now a workshop, has the Docton coat of arms on the outside. It was once a monastery and was later used as a rest house by pilgrims to Hartland Abbey.

Prior to the Napoleonic Wars, Appledore did a considerable coasting trade, and its ships were a prey to press gangs. One of the Appledore manned ships was stopped off the Longships (Land's End) and boarded by His Majesty's officials, and amongst the crew was young Daniel Jenkins, who was famous for his exceptional eyesight. He was placed on board Nelson's ship the *Victory*, and became one of the principal signalmen on the ship. His descendants claim that he was one of the signalmen who hoisted the famous signal at the battle of Trafalgar.

The *Victory's* coxswain was also an Appledore man named Cox, and Nelson nicknamed him "Warrior." At one time, after a long period of service afloat with Nelson, he deserted the ship, but Nelson happened to meet him at Milford, and being rather fond of "Warrior," gave him the choice of returning at once to the "Victory," or being hanged at the yard arm. Needless to say, "Warrior" chose the former alternative!

Two of Cox's direct descendants were coxswains of the famous lifeboat *Hope*, which was stationed on the Burrows. Their names were Nathaniel Cox and Joseph Cox, and they were bemedalled by grateful foreign countries for saving men of foreign ships.

When the graceful full-rigged sailing ships traded between England and Australia, Appledore men, as usual, took an active part, and anyone who walks on Appledore Quay to-day will find at least one old master mariner who can tell tales of those good old days when sails were set to the music of the sea shanty.

In 1936, Appledore played her part when R.M.S. *Queen Mary* recovered for Britain the blue riband of the Atlantic from the *Normandie*, as three of her officers and crew hailed from Appledore.

Charles Garvice, the world-famous novelist, lived for many years at "Boathyde near Appledore." J. Weare Gifford chose Appledore for the scene of his novel of smuggling days—*Lure of Contraband*—based, no doubt, upon the activities of Thomas Benson, the smuggling M.P., who lived at Knapp House, Northam, in 1748.

THE
Gay Adventure Cafe

108, Irsha Street, Appledore

for

BREAKFAST : LUNCH

TEA : SUPPER

or

LIGHT REFRESHMENTS

Limited Accommodation for Bed and Breakfast



MARINE VIEWS FROM APPLIEDORE

(Parry)

Of Educational Interest



Parents, whether contemplating a holiday in the district or of settling down permanently here, will be interested in the excellent educational facilities available both for boarders and day pupils.

Most are aware that the former United Services College, which was built at Westward Ho ! and at which Rudyard Kipling was educated, was sited not without due care and success.

From those days three other first-class boarding schools have been developed for girls in the district. At Northam there is the Stella Maris Convent school, which is gloriously situated, overlooking the estuary and the sea ; while at Bideford there is Edgehill College, sponsored by the Methodist movement, with about 200 boarders and a fine scholastic record ; and also at Bideford is West Bank School, which is sponsored by the Church of England. Junior boarding departments are included and each of the schools, of course, have a proportion of day pupils. For boys, there is Bideford Grammar School for day pupils, and a few miles from Bideford there is Shebbear College, the "brother" school to Edgehill, similarly sponsored by the Methodist movement. This school is almost entirely for boarders, and enjoys a nationwide reputation for educational achievement. Fees are reasonable compared with other schools of the same high standard elsewhere, a fact increasingly recognised by those retiring home from abroad, and other potential local residents.

CARAVANS, CHALETs AND FURNISHED FLATS ADJOINING SEA at WESTWARD HO!

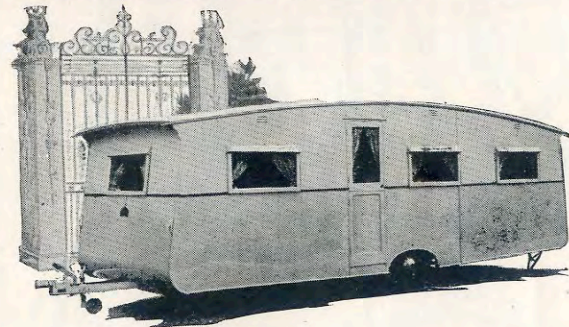
Sole Booking Agents :-

BRADDICKS

Furnishers, House Agents & Auctioneers
31, Mill Street, Bideford

Distributors for:
Berkeley, Sprite and
Willerby Caravans

Caravans also
Available for Touring
Hire



WE HAVE A LARGE SELECTION OF
CARAVANS FOR SALE AT OUR
SHOWGROUND AT WESTWARD HO !

*At the Main
NORTHAM—BIDEFORD
Road Junction*

Kelly & Littlejohns

*The Motor Engineers
Raleigh Garage, Bideford*



*For Breakdowns or Service
Phone BIDEFORD 384*

Telephone: Bideford 902/3

HANNAFORD, WARD AND SOUTHCOMBE

LIMITED

House and Estate Agents

Property and General Auctioneers,
Surveyors and Valuers

Insurances effected with Principal Companies

4, Bridgeland Street, Bideford

*Also at
Torrington, Chulmleigh & Barnstaple (John Smale & Co.)*



**come
and
join in
the fun**

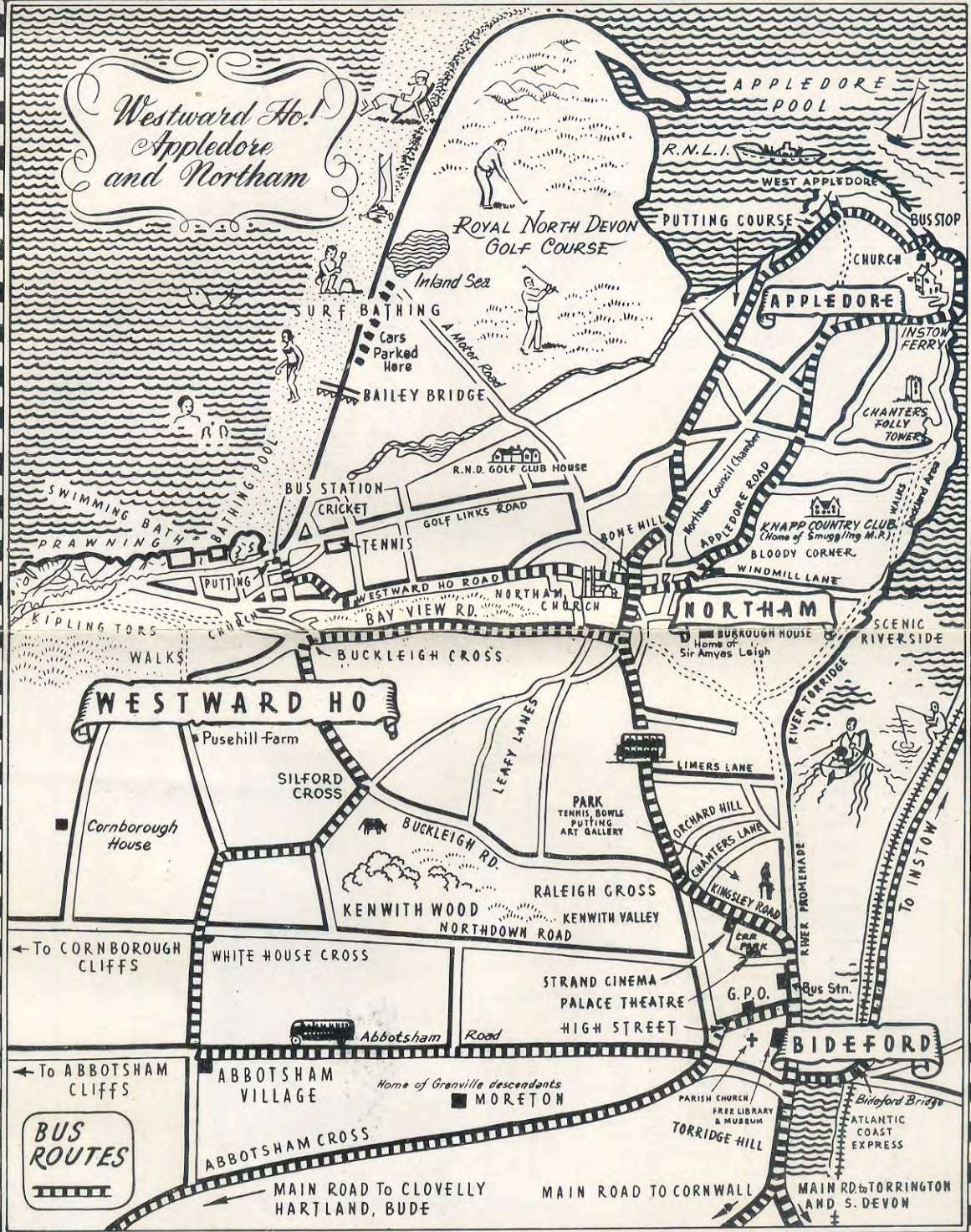


You'll have the holiday of your life at this gay, comfortable Holiday Centre on the sunny coast of glorious Devon. Well-furnished chalets fitted hot and cold water and own toilet. Spring interior mattresses. Good food well served in spacious dining hall. One of the largest ballrooms in North Devon, billiard room, games room, lounge. Concerts, film shows, tennis, putting, children's playground, children's rec-room. Competitions with prizes to be won. All entertainments and games FREE. Write for brochure NOW.

★ **WESTWARD HO!**
HOLIDAY CENTRE

NEAR BIDEFORD NORTH DEVON

*Westward Ho!
Appledore
and Northam*



← To CORNBOROUGH CLIFFS

← To ABBOTSHAM CLIFFS

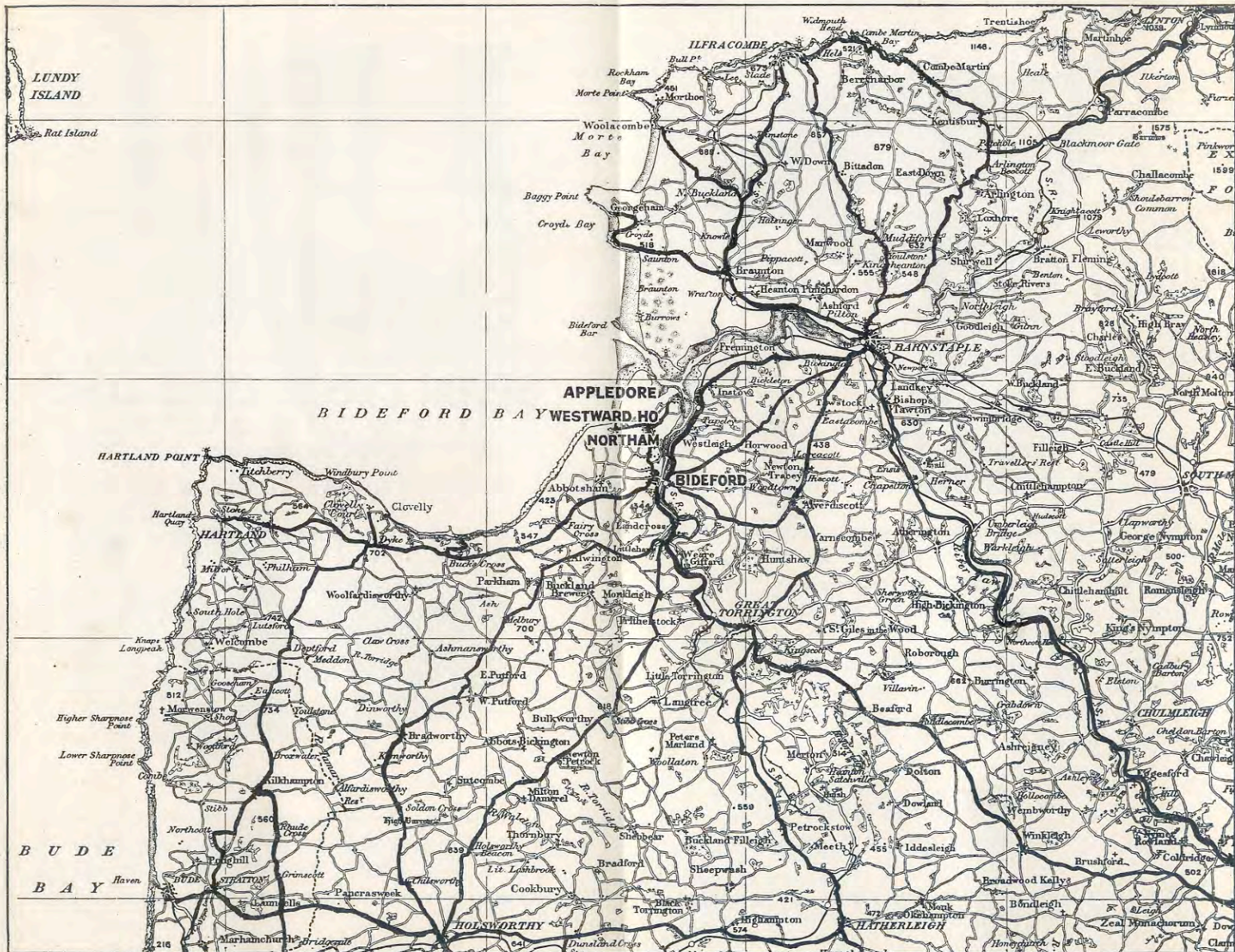
BUS ROUTES


ABBOTSHAM VILLAGE Home of Granville descendants
 ■ MORETON

ABBOTSHAM CROSS
 MAIN ROAD TO CLOVELLY HARTLAND, BUDE

MAIN ROAD TO CORNWALL

MAIN RD. TO TORRINGTON AND S. DEVON



Scale of Miles



Reproduced from the Ordnance Survey Map, with the sanction of the Controller H.M. Stationery Office

Bideford Gazette, Ltd



DEVON CREAMERIES Cafe

55 • MILL STREET • BIDEFORD
We serve Vegetables fresh from our own Kitchen Gardens.

R. L. KNIGHT, Ltd.

Photographic Studios at

BARNSTAPLE, BUDE & LAUNCESTON

- MODERN PHOTOGRAPHY
- PORTRAITURE
- EXPERT OPERATORS
- CINEMATOGRAPHY
- SOUND PROJECTION
- APPARATUS
- ADVICE
- SALES
- SERVICE

Mobile Sound Film Equipment Available
For Film Shows in Devon and Cornwall

EDUCATIONAL HOLIDAYS

Westward Ho ! is a centre to which day schools from various parts of the country come to spend Educational Holidays studying the district. They usually produce their own guide books, and information therein accumulates.

This is education in action. Maps of the district are prepared, and the raised beaches, historic finds, and the natural formation of the famous Pebbleridge are closely inspected. There is so much of general knowledge—the four lighthouses and their distinctive flashes, the different types of buoys used in the estuary channel, the lifeboat and shipbuilding interests, apart from the general knowledge to be gained from the natural surroundings.

Local history, as already given, provides much excitement and exploration, and there is a fine local museum and art gallery at Bideford.

Enquiries for educational holiday accommodation should be made as early as possible.

Edgehill Girls' College

BIDEFORD

(Recognised by Board of Education. Full Staff of Graduate Trained Teachers)

BEAUTIFULLY SITUATED, the estate consists of Main College buildings, 3 boarding houses, and spacious grounds, affording ample recreation gardens, playing fields, and vegetable gardens.

SENIOR SCHOOL, girls from 10 to 19 years.
JUNIOR SCHOOL, open to day girls of 7 to 10 years.

Applications for day and boarding vacancies in September are now being received and should be made as soon as possible to :

The Headmistress, Miss H. LAWSON BROWN, M.A. (Oxon).

Stella Maris Convent

LAKENHAM AND COMMONS
NORTHAM BIDEFORD

Boarding School for Girls

7 to 18 years

Separate Senior and Junior Houses

THE SCHOOL, ideally situated, overlooks the sea. It has its own playing fields, vegetable and fruit gardens. The aim of the School is to provide a sound education on modern lines in happy, home-like surroundings. A graduate staff prepares the pupils for the usual examinations to University Entrance. Much importance is attached to Music, Languages, Art and Domestic Science, and girls not wishing to proceed to Universities can specialise in any of these subjects in the Sixth Form. Dancing - Swimming - Riding

Complete charge taken of children whose parents are abroad.

For Illustrated Prospectus, apply to the Reverend Mother

Telephone : Northam 47

Stella Maris Convent



LAKENHAM, SENIOR RESIDENTIAL HOUSE

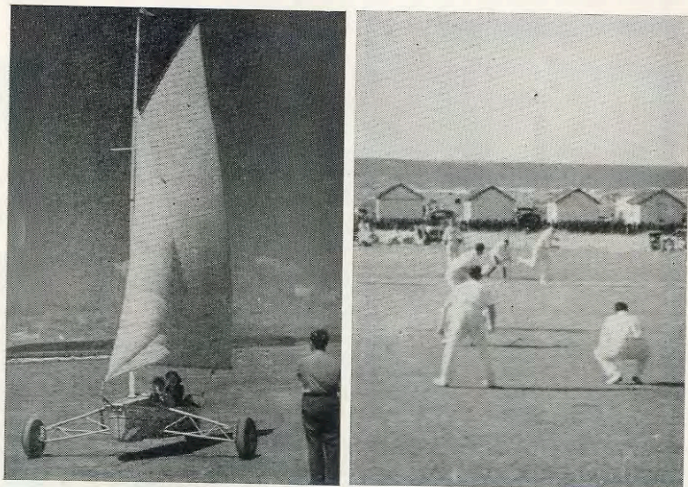


"COMMONS," JUNIOR RESIDENTIAL HOUSE



THE FAMOUS FIFTH !

(R. L. Knight)



SAND-YACHTING AND CRICKET
(Photos by Stuart J. Turner and A. K. Chope)

Sport and Recreational



Visitors need not fear the vagaries of the weather for a holiday in Westward Ho ! Northam and Appledore. When it's fine there is everything available on land, sea or in the air. And should perchance there be some soft, endearing rainfall, there is also much for the comfort of the whole family ! For father, the various local clubs for bridge or snooker ; for mother, the inspection at length of the excellent shops in Bideford ; and for the children, an exploration on the lines of an educational holiday (see page 39), visiting the local museums, the two modern cinemas, indoor games of table-tennis, the picture gallery and art exhibitions ; and for all there's nothing like reading one of the many adventure books about the district and which are available in the house, or per Messrs. Harper Library, Bideford (see page 57 for list of local books).

BATHING AND SURF-RIDING

With some three miles of firm golden sands, reaching out to glistening rollers, and a long, natural pebbleridge on which to undress and sunbathe, it is not surprising that bathing counts as one of the chief joys at Westward Ho!

It is an experience that all the family can enjoy in perfect safety, because the rollers, though they come straight in from the Atlantic and are sometimes nine-ahead in depth, are not dangerous. The child of tender years gets as much "kick" and exhilaration from the smallest sea-breaker, as the older ones who push farther out.

Surf-riding is a great sport, and surf-boards are obtainable at the shops on the front.

There is a delightful swimming pool amongst the rocks, provided by Northam Urban District Council, and this is conveniently sited for those staying at the hotels or holiday camps.

The Westward Ho ! Swimming Club has its headquarters at The Patio, a privately-owned open-air sea water swimming bath, where one can swim, sunbathe or enjoy

refreshment to the soothing strains of music. This pool, which has associations with Kipling and the old United Services College at Westward Ho ! is the scene of some interesting water polo matches and sports during the season.

BOATING

Canoes, rowing and motor boats can be hired at Appledore, which is a popular boating centre, and on a flowing tide visitors can sail with the minimum of effort for a distance of about six miles up the beautiful river Torridge to Weare Giffard, famous for its strawberries and cream, passing under the many-arched bridge of Bideford on the way. After picnicking on the river bank amid glorious woodland scenery, the return journey can be made on the ebb tide.

The enchanting scenery of the Vale of Torridge is viewed at its best from the river. The little white houses of Appledore can be seen climbing up the wooded hillside, sheltered from the prevailing winds, and watched by the crumbling tower known as Chanter's Folly—so named after the merchant who had it built to watch his ships come in over the bar, and then found that it was not high enough ! Higher up the river are the lovely slopes of Northam, opposite which are often moored ocean going vessels waiting for a commission, whilst across the ferry from Appledore sits sleepy little Instow.

BOWLS

Within about 10 minutes' bus ride of any part of the district, there are two splendid bowls rinks at Bideford, one belonging to the local Council, and the other, belonging to Bideford Bowling Club, which has a big bowling tournament during the August Bank Holiday week.

CRICKET

Amateur cricket matches are played throughout the season at the Westward Ho ! Ground, and are watched with great keenness by holiday-makers. The ground is

situated between the tennis courts and the sea-beach. Visitors wishing to participate in a game may do so by arrangement with the club secretary.

FISHING

Rod and line fishing can be obtained from the rocks by Rock's Nose, or **prawn fishing** (a very popular pastime) may be indulged in the innumerable pools amongst the rocks at **Westward Ho !** (nets and fishing tackle can be obtained locally).

Salmon fishing at Appledore is available, this being a chief occupation for the boatmen of that port, and this can provide great interest for visitors, either as spectators or participants. Fishing for bass, between Appledore "pool" and the bar, is also a popular sport.

Arrangements for fly-fishing from local rivers and reservoirs can also be made.

GOLF

THE ROYAL NORTH DEVON GOLF CLUB, Westward Ho ! (see plan of course on page 26 and a view of the fifth green on page 42), possesses a course which has been on the championship rota for a quarter of a century, and is not only universally acknowledged to be the finest in Devon, but it is also one of the greatest and best known in the world. His Majesty King George VI was Patron of the Club, and amongst famous golfers the course has produced must be included Mr. J. H. Taylor and Mr. Horace Hutchinson. As the course stretches all the way to Appledore, it is as equally convenient of access from there and from Northam as from Westward Ho !

The course is set in superb surroundings, and the natural hazards include dykes, and bushes of great sea rushes the height of a man, whilst the mobile hazards are the sheep of the Potwallopers" (the commoners) which keep the turf so short that it does not need mowing. The "Potwallopers" also keep the great pebbleridge in good shape, and thus protect the golf course from the action of the Atlantic breakers. In recent years, however, Northam

I can be of Service to
YOU!

*Specialised knowledge
combined with
Service and Civility*

Laundon

(R. LAUNDON, F.I.C.C.D.)

CONFECTIONER
and TOBACCONIST

*The Principal Walls' Ice Cream
Agent*

7, High Street, BIDEFORD



FOR SPEEDY- EFFICIENT SERVICE

Entrust your Car to

F. C. TWOSE, M.I.M.I.

The Nelson Garage

Westward Ho!

'Phone: Northam 129

A.A.

REPAIRS TO ALL MAKES

R.A.C.

CARS FOR HIRE

(With or without Driver)

SHELL-TECALEMIT LUBRICATION SERVICE

WASHING, GARAGE ACCOMMODATION

Skilled Staff, under Personal Supervision

Satisfaction Guaranteed

We will Collect and Deliver your Car at your
Convenience

Council with their coast protection work at Westward Ho ! have appropriated this responsibility. Apart from major and minor championships, there are Club meetings, the principal ones being in April, June, August, September and December. Visitors are warmly welcomed, ground fees being 5/- per round, 7/6 per day, 30/- per week and £4 per month; Ladies 4/- per round, 6/- per day, 25/- per week and £3 per month. New members for either the Royal North Devon, or the associated Westward Ho! Ladies' Club, will find fees very reasonable compared with elsewhere. There are, of course, resident professionals and further club details can be obtained from the Club Secretary, c/o the Club.

HORSES AND HUNTING

For those interested in horses, there are riding stables at Northam, and also at Bideford. Children (and adults) can have great fun riding on the horses on the sands.

In the season, good hunting can be had with the Stevenstone Foxhounds, and the Torrington Farmers' Hunt, while further afield there is hunting with the Tetcott and the Hatherleigh Harriers, and, of course, in the Exmoor direction good sport with the Devon and Somerset Staghounds.

INDOOR ENTERTAINMENT AND SPORT

Although holidays spent in Westward Ho ! Northam and Appledore are mostly family holidays or holidays planned with outdoor interests in view there are adequate facilities for billiards, darts, table tennis, skittles, dancing, etc.

To those who, having spent an enjoyably full day, seek light social interest, there are attractive lounge bars at Westward Ho ! Northam and Appledore, and it makes a pleasant evening excursion to take a quiet walk to one or the other, finding at each a happy mingling with local inhabitants as well as fellow visitors.

At Bideford, a convenient 'bus service takes one in to the Strand and Palace Cinemas, which are up-to-date both in films and modern comfort.

Throughout the season, there is much doing in organised entertainment, in connection with local Carnivals, Hospital fetes, etc.

PUTTING

There are three 18-hole putting greens, one at West Appledore and two at Westward Ho ! One of the courses at Westward Ho ! is on the promenade and the other adjoins the tennis courts. In addition, there are other courses in private grounds of hotels, etc. The charge is 3d. per round, with free score card and use of club, ball and pencil.

REGATTAS

Three local regattas are highlights in local "dated" events during the summer. Appledore Regatta (including the West of England Rowing Championship as well as sailing) is usually held in Bank Holiday Week, and "Appledore West" has an additional and quite exciting regatta all on its own, this being for sailing and in-rigged rowing events. The Port of Bideford Regatta in early September is the closing regatta of the West.

YACHT RACING

Born to a sea life, the sons of Appledore are never happier than when skimming over the billows in their sailing boats, engaged in the friendly rivalry of yacht racing. Twice a week throughout the season, this exciting sport gives added interest to the fascinating life of the river. It is thrilling to see the forty or so yachts of the Appledore Sailing Club, after the firing of the starting gun, straining to gain and maintain the lead from one another. Every square inch of the twenty-two yards of sail is used to capture every ounce of wind, and great skill is required when rounding the various buoys—an unexpected puff of wind and a "Lee O" at the wrong time may easily result in a yacht's sinking under her crew. Visitors who like a thrill and are good swimmers, might feel inclined to take part in such

races. A skipper is usually agreeable to taking one visitor amongst his crew, but such a visitor must not mind getting splashed nor must he be easily scared, as by inattention to his small duties he might cause his yacht to lose the race. Information regarding yacht racing may be obtained from Sladers, Ship Chandlers, The Quay.

There is also the Taw and Torridge Sailing Club at Instow, across the river from Appledore, which has frequent events during the season.

SAND YACHTING

A familiar sight on the magnificent sands at Westward Ho ! in recent years has been the gaily-coloured sails of sand yachts. These yachts have attained speeds of 35-40 miles per hour, according to wind, and the B.B.C. reported and televised races that took place in August, 1949.

Northam Urban District Council have officially recognised the sport, which is under the auspices of the Westward Ho ! Sand Yacht Club, but yachts are available for any visitor who wishes to hire them or enjoy a run with a competent helmsman in charge.

SURF-RIDING (See Bathing)

TENNIS AND SQUASH

Three public tennis courts are provided by Northam Council at Westward Ho ! within view of the beach. These hard courts have been laid out by experts, and are complete with pavilion and ladies and gentlemen's rooms.

Private tennis courts open to the public include those at the Golden Bay Hotel, Ennisfarne Hotel, both at Westward Ho ! and at the Country Club at Knapp there are both squash and tennis courts, available to temporary members.

Within 10 minutes' bus ride of any part of the district, there are the tennis courts of Torridge Vale Tennis Club, Bideford, which has a popular juvenile tennis tournament during August, and also there are public hard courts there.

Every Walk Inspires



Because of its fascinating and varied geographical nature, every walk has something to inspire the visitor. There are the excursions along the river-side, the estuary boundaries, along the beautiful coastal cliffs, or inland across wooded slopes, dotted with farmhouse, cattle, birds, and the unexpected spot of interest.

Here are a few suggestions (others are included in the list of excursions on pages 53-55) :—

FROM WESTWARD HO ! One of the most lovely cliff walks is that from beyond the Patio bath westwards towards Clovelly. For three or four miles one can walk on springy turf among the colourful heather and gorse, with the sea in sight all the way and with Hartland Point, Lundy Island and Baggy Point in the distance.

Interesting variations of this walk are as follows :—

- (1) Go through Kipling Tors top gate, turn right and follow the lane, keeping to the right all the time. Pass signpost "No through road" and turn right at notice saying "To the Cliffs." Take left stile at bottom and walk over grassy slopes at Cornborough Cliffs. Return along cliff edge to Westward Ho !
- (2) Take road opposite Kipling Tors top gate and follow winding road to Abbotsham Church. Turn right at Greencliff signpost, ignore minor crossroads and junction, and continue past duckpond until a "private road" sign is reached. At the tree beyond is an arrow pointing to the cliffs.

A pleasant easy walk, full of interest, is eastward along Golf Links Road, turning to the left at the end, and then across the golf course to the pebbleridge at Sandy Mere, from where fine views of the surrounding hills, bay and river are obtained.

Another interesting walk, which is almost a circular tour of the urban district, is across the golf course and burrows to Appledore, with its quaint narrow streets and curved quay, then along the river side path to leafy Windmill



KIPLING TORS WALKS, WESTWARD HO !

(R. L. Knight)

Lane, continuing along through Northam to the war memorial, along Bay View Road to Orme Lodge, turning to the right into Kipling Tors and then down to the sea front at Westward Ho !

FROM APPLIEDORE AND NORTHAM. Numerous walks may be taken from Appledore, and the visitors who own a camera will not regret bringing it on holiday.

The walks from West Appledore include one across the golf links to Westward Ho !—a distance of two miles—or one can branch off to Northam on the left.

From East Appledore is a lovely riverside path past Boathyde—the former home of Charles Garvice, the famous novelist—up Leafy Windmill Lane (so called because a windmill belonging to the Leighs of Burrough once stood near the summit) and on to the centre of Northam, or one can turn left and continue along the river bank, through Cleave Houses (a cosy Northam riverside retreat) and on to Bideford, famous for its long bridge of 24 unequal arches.

Similar routes can be taken in the opposite direction from Northam.



THE SPIRIT OF BIDEFORD

THE CHANTRY

WESTWARD HO !

Board Residence
Bed & Breakfast

Two minutes from Sea and Bus Stop. Ideal for kiddies.
Lovely Sands and Bathing Facilities. Car Space.
Special Terms for Winter Residents. Golfing and Riding.

Proprietors - - - - Mr. & Mrs. WILLETTS

Telephone : Northam 605

Trips Round the Area

(See also Map in Centre Pages)



Westward Ho ! Northam and Appledore make a very practical centre for radiating trips to the exciting places around. The Devon and Cornish coasts are easily reached by car, or by the use of the 'bus services and a little of "Shanks's Pony" ! There are beautiful combs and hidden valleys, old-world villages, and pleasantly scented riverside hamlets in all directions.

Here are a few places worth visiting :—

ABBOTSHAM. A well-signposted, delightful $1\frac{3}{4}$ miles walk south from Stanwell Hill brings one to the village of Abbotsham, which possesses what has been described as the prettiest little church between the Torridge and Hartland. The 16th and 17th-century bench-ends in the nave are magnificently carved, and each being different, deserve individual attention. Return via Bideford and Northam, or turn west and then north to return via Cornborough Cliffs.

BARNSTAPLE was a Royal Borough in the days of William the Conqueror. Places of interest are: Queen Anne's Walk; Castle Mound ; Market (Friday); Parish Church; St. Anne's Chapel; Church Lane Almshouses; Pottery; Penrose Almshouses; Rock Park; Atheneum. There are frequent 'bus and rail services.



HIGH ST CLOVELLY

BIDEFORD. $1\frac{3}{4}$ miles south of Northam is the town of Bideford, famous for its ancient bridge of 24 unequal arches. The Church has a brass plate to Sir Richard Grenville, who was killed in his ship the *Revenge* in 1591, which alone and for 24 hours, continuously held out against a complete ring of Spanish galleons. There is also a monument to John Strange, who died of the plague in 1646 after accepting the mayoralty whilst others were fleeing from the town.

In the Town Hall, east of the Church, is a small museum which is worth a visit. On the hill behind the railway station is the site of Chudleigh Fort, which was surrendered by the Roundheads to the Royalists in 1643, and from which good views of the district can be obtained. In the Victoria Park (north of the Kingsley Statue) are guns of the Armada period. These guns were formerly at Appledore. Return from the park, along the river path to Northam or Appledore.

BUCKS MILLS. A beautiful little fishing village in a wooded combe between Westward Ho! and Clovelly. Buses pass Bucks Cross. Good walkers can alight at Hoops Inn or Hobby Lodge and walk across country. Half to one day's outing.

CLOVELLY. A unique little beauty-spot in the cleft of a steep cliff, with its quaint cobbled and stepped street struggling up between picturesque cottages, pannier donkeys being the only means of transport. Gallantry Bower, a cliff about 400 feet high, is worth a visit, as also is Clovelly Church, the names on many of the tombs being reminiscent of the characters in Kingsley's *Westward Ho!* Visitors can either go direct to Clovelly by 'bus or they can alight at Hobby Lodge and walk for a glorious three miles along the winding Hobby Drive (toll road).

HARTLAND is to the west of Clovelly, in the midst of rugged cliff scenery. On the way to **HARTLAND QUAY** is the beautiful church of St. Nectan. A cliff walk leads to the Coastguard Station and Lighthouse. The return walk completes a circular route to Hartland Point. A whole day's outing.

ILFRACOMBE is reached by means of a half-hourly 'bus service from Westward Ho! and Northam. The pleasant journey through Bideford, Instow, Fremington and Barnstaple, and the diversity of interests in Ilfracombe itself, provide a good day's outing.

INSTOW is reached by ferry from Appledore. Its ancient church is on the hillside above the cross roads.



ATLANTIC SEAS AT HARTLAND QUAY

LITTLEHAM can be reached via Abbotsham or Bideford. Its church, situated in a wooded hollow, contains the most beautiful rood screen in Devon.

LUNDY ISLAND is about 12 miles from Hartland and 23 from Appledore. The history of the island goes back to about the 4th century, and for two and three-quarter centuries from about the year 1100 it was owned by the de Marisco family, who lived by piracy. Until about 200 years ago the island was almost continuously in the possession of pirates, and later, Thomas Benson, the smuggling M.P. of Northam, used it for the storage of his contraband goods. The island at present has about 40 inhabitants, and the postage stamps are valued in "puffins," but not valid on the mainland.

TORRINGTON is an ancient borough, whose manor lands were seized by William the Conqueror at the instigation of his vindictive wife, Matilda.

Said to be the most beautiful inland town in Devon, Torrington's chief items of interest are:—Parish Church (blown up during Civil War), Castle Hill Grounds (overlooking the Torridge Valley), Ancient Bowling Green, Glove Factories, Taddipport Bridge and Church. 'Bus and rail services. Half to one day's outing.

A. C. HOOPER

F.V.I., F.A.L.P.A.

22, MILL STREET, BIDEFORD

AUCTIONEER and HOUSE AGENT

Tel.: BIDEFORD 708

G. DAVIDSON

HARDWARE — CHINA — STATIONERY
FANCY GOODS — TOYS, Etc.

Agent for Dunlop Shoes and Wellingtons

5, NELSON ROAD, WESTWARD HO! NORTH DEVON

THE WESTERN COUNTIES BUILDING SOCIETY

WILL ASSIST YOU

★ TO PURCHASE YOUR HOUSE

Liberal Advances with Prompt Service

★ TO SAVE WITH SAFETY

Interest $2\frac{1}{2}\%$ tax paid. Ease of Withdrawal

Full Particulars—A. H. GOODMAN, A.C.I.S., Secretary
1, GRENVILLE STREET, BIDEFORD. Phone 90

Books of Local Interest



Fiction: *Westward Ho!* (C. Kingsley); *Stalky & Co.* (Rudyard Kipling); *Lure of Contraband*, *The Golden Bay*, and *The Riddle of the River* (J. Weare Gifford); *Lorna Doone* (R. D. Blackmore); *Maid of Sker*, *Last of the Grenvilles*, and *The Treasure of the Golden Cap* (B. Copplestone); *The Mighty Atom* (Marie Corelli); *Mary Lee* (G. Dennis); *Overlooked* (B. Hawker); *Curse of Doone* (S. Horler); *Katerfelto* (H. W. Melville); *Man of Genius* (M. P. Willcocks); *The Village Book*, *The Pathway*, *Tarka the Otter*, and *Tales of a Devon Village* (H. Williamson); *The Story of a Red Deer* (J. Fortescue); *Orange Street* (S. P. B. Mais); *Asenath of the Ford* (Rita); *The Murder on the Burrows* (E. C. R. Lorac); *The Terror of the Tideway* (Rev. P. J. Somers Cocks); *Roanoke Hundred* (Inglis Fletcher); *Wilderness of Monkeys* and *Island Providence* (Frederick Niven); *Queen Elizabeth's Story* (Rosemary Sutcliff).

Biography and History: *Something of Myself* (Rudyard Kipling); *Stalky's Adventures* (L. C. Dunsterville); *Vicar of Morwenstow* and *Devonshire Characters and Strange Events* (S. Baring Gould); *School-days with Kipling* (G. C. Beresford); *Worthies of Devon* (J. Prince); *Odd Ways in Olden Days down West* (Vic); *Charles Kingsley's Life and Letters* (By his Wife); *Survey of Devon* (T. Risdon); *Literary Landmarks of Devon and Cornwall* (R. T. Hopkins); *Rudyard Kipling—Craftsman* (McMunn); *Sir Richard Grenville of the Revenge* (A. L. Rowse); *History of Devon* (D. & S. Lysons); *History of Bideford* (J. Watkins); *History of Bideford and History of Grenville Family* (R. Granville).

Topography and Essays: *Walks in North Devon* and *Glorious Devon* (S. P. B. Mais); *A Farm in Creamland* (C. Garvice); *My Native Devon* (J. Fortescue); *The North Devon Coast* (C. G. Harper); *Unknown Devon* (L. du G. Peach); *North Devon with West Somerset* (B. & G. Holmes); *Highways and Byways in Devon and Cornwall* (A. H. Norway); *The Delectable West* (Sir H. Russell); *The Coasts of Devon and Lundy Island* (J. L. W. Page); *Devon* (W. H. Thompson); *Rambles in Devon* (J. H. Wade); *North Devon* (F. J. Snell); *On Foot in Devon*, *Life in a Devon Village*, and *Labouring Life* (H. Williamson); *This North Devon of Ours* (A. H. Slee); *Devonshire* (S. Baring Gould, revised by H. Ronald Hicks); *Home in Ham* (R. W. Thompson); *Journal of a Husbandman* (R. Duncan); *We See Devon* (Val Doone); *Devon* (A. Mee); *We Wander in the West* (S. P. B. Mais); *Wanderer in the West* (E. W. Martin); *Devonshire* (A. St. Leger Gordon); *Tempestuous Isle* (P. T. Etherton & V. Barlow); *Lundy, Isle of Puffins* (R. Perry).

Poetry: *Westward Ho!* (Jane Elliott); *Kenwith* (Eliza Down); *The Revenge* (Tennyson); *Poems of John Gay*; *Poems of Edward Capern*.

DISPENSING CHEMIST

PHOTOGRAPHIC

DEALER

M. SPARKES

M.P.S. (Lond.)

Circulating Library
All the latest books



Stockist of INNOYA, YARDLEY, GOYA,
MAX FACTOR, Etc. PREPARATIONS

THE PHARMACY (Nr. Promenade)
WESTWARD HO!

Phone Northam 29

Helpful Notes



ACCESSIBILITY

Rail : Express services run from London (Waterloo and Paddington), Manchester (London Road and Central) and other principal North and Midland stations.

Road : Passengers should book to Bideford, whence Southern National Omnibuses run frequently to Westward Ho! and Appledore, both passing through Northam. Royal Blue and other luxury coaches run from London and principal towns. Southern National 'buses cover the entire country between Minehead in Somerset and Newquay in Cornwall.

CLIMATE

Here is the maximum amount of sunshine. During the last sixty years the percentage has been higher than in any other part of the British Isles.

POSTAL FACILITIES

Appledore : The Quay. Hours of business, 9 a.m. to 6 p.m., Saturdays 9 a.m. to 1 p.m. Two deliveries of letters and parcels daily. Three despatches of letters and parcels daily.

Northam : Cross Street. Hours of business, 9 a.m. to 6 p.m., Wednesday 9 a.m. to 1 p.m. Deliveries and despatches as for Appledore.

Westward Ho! : Hours of business, 9 a.m. to 1 p.m. and 2 p.m. to 6 p.m. Tuesday 9 a.m. to 1 p.m. Deliveries and despatches as for Appledore and Northam.

Telegrams delivered 9 a.m. to 6 p.m. All classes of Post Office business, except Motor licences, transacted at all three offices.

Orchard Hill : Hours of business, 9 a.m. to 1 p.m. and 2 p.m. to 6 p.m., except Thursdays 9 a.m. to 1 p.m. Telegrams delivered 8 a.m. to 8 p.m. Two deliveries and five collections daily. Postal Orders, Pensions and Stamps.

The Tides : High-water times are given each week in the *Bideford & North Devon Gazette*.

Established 1817

Wickham & Co. Ltd.

*Wine & Spirit Merchants
Ale and Cider Bottlers*

A LARGE ASSORTMENT OF
LIQUEURS IN MINIATURES
AND LARGER SIZES

**21, High St.
BIDEFORD**

Telephones 10 and 662

Daily Deliveries

J. A. FRIENDSHIP

The Supply Stores

for . . .

GROCERIES

TOBACCO

CONFECTIONERY

**MAIN ROAD
WESTWARD HO!**

Thomas & Son

Jewellers

Inc. F. V. COLE

Limited

'Phone

864



21, Mill Street, Bideford

We have a fine selection of

DIAMOND and GEM SET JEWELLERY,
SILVER and SILVER PLATE,

CLOCKS and WATCHES

TROPHIES - CUPS - MEDALS

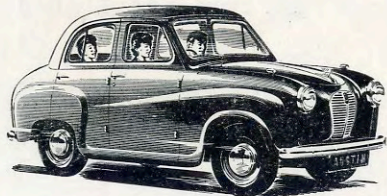
Prompt Repair Service

Associated with

THOMAS and SON, 35, HIGH STREET, ILFRACOMBE
and

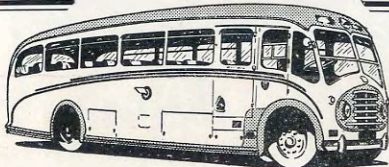
R. W. YEO LTD., Burlington Arcade, LONDON, W.1.

★ *Bideford's Largest Garage*
Elliott & Sons (Motors) Ltd.



Telephone
 744

Distributors for
 NORTH DEVON **ROVER**
Main Dealers **AUSTIN STANDARD**
KINGSLEY ROAD - BIDEFORD



REGULAR DAILY OMNIBUS SERVICES
 Excursions and Tours from Bideford, Appledore
 and Westward Ho!

**BUSES AND COACHES AVAILABLE FOR
 HIRE BY PRIVATE PARTIES**

"ROYAL BLUE" Express Coach Services for
 Long Distance Travel

Address your enquiries to the Company's Local Office:
THE QUAY, BIDEFORD. Tel. 193.

THE
SOUTHERN NATIONAL
 OMNIBUS COMPANY LIMITED

A/S 951

COLEBY

DISPENSING CHEMIST
NORTHAM

*Full Range of Toilet Requisites
 Dispensing Service:*

6-7 p.m. Monday, Tuesday, Thursday. Friday, Saturday

GOLDEN LION
Cross Street, Northam

COMFORTABLE ACCOMMODATION
 Hot and Cold in all rooms

Moderate Terms, on application . . .
 S. H. GULLIVER, Propr.

Tel. Northam 594

TELEPHONE NORTHAM 65

W. J. LAMEY & SONS LTD

(incorporating S. J. Metherall & Co.)

Bidna Yard, Appledore, Devon

- Coal, Coke, Logs, Anthracites, etc.
- Road and Drive Construction
 (Paths, Gravels, Tarmacadam
 Surfaces)
- Road Rollers for Hire

Truscott's Library

MAPS - GUIDE BOOKS - VIEWS
FANCY GOODS - STATIONERY
NEWSAGENT - BOOKSELLER

Largest Selection of Views in the District

Telephone 343



The Quay, Bideford

(Next Southern National Office)

Meredith & Son

18, HIGH STREET
BIDEFORD



The most comprehensive Stock
and the Finest Store of
Ironmongery in North Devon

THE COURTESY OF OUR STAFF IS PROVERBIAL

'Phone : 21

Proprietor : A. SLEE

For a Happy, Homely Holiday come to . . .

2, MEETING STREET, APPLIEDORE

Good Food and Comfortable Beds. Within easy reach
of Westward Ho ! Sands and Royal North Devon
Golf Course.

Attractive riverside and country walks, with boating and fishing
facilities close by. Bathing nearby. 'Bus stops opposite for
connecting with main centres. *Proprietress* : Mrs. C. A. Rees

The Paper for the District

Bideford and North Devon Gazette

Telephone 777/8

Offices - 5, GRENVILLE STREET, BIDEFORD

'Phone : *Bideford* 431

For BEST HOUSE COAL and ALL FUELS

Consult—

H. A. & E. J. Littlejohns

COAL MERCHANTS and HAULIERS

Personal Attention and Prompt
Service given to all Orders

Regular Deliveries to the following areas :

Bideford, Northam, Westward Ho ! Appledore, Instow,
Fremington, Newton Tracey, Horwood, Alverdiscott,
Dolton, Beaford, Putford, Buckland Brewer, Parkham,
Bradworthy, Woolsery, Higher Clovelly, Hartland,
Bucks Mills, Horns Cross, Fairy Cross, and Abbotsham

WESTCOMBE - - - - BIDEFORD

Sub-Office : Fore Street, Northam

FOR QUALITY AND SERVICE

GO TO

Barretts (North Devon) Ltd.

NORTHAM and WESTWARD HO !

Telephone

Northam 59

Westward Ho ! 182

*Regular Motor Deliveries
to all parts of the District*

- TEA
- COFFEE
- GROCERIES
- PROVISIONS
- CONFECTIONERY
- GREEN FRUIT
- DOG FOODS
- ETC., ETC.

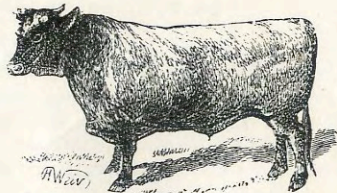
C. G. Bradford & Son

High-Class Family and Shipping Butchers
Rabbit and Poultry Dealers

Prime English Meat and New Zealand Lamb
Sausages made daily

Daily Deliveries to all parts of the District

Telephone :
Northam 32.



THE SQUARE - - - NORTHAM

Telephone : NORTHAM 168

Boyles Supply Stores

Market Street, Appledore

Grocer, Greengrocer

Confectioner



LICENSED TO SUPPLY SHIPPING



Chubb's The Wool Shop

Sole Agent for—

LADYSHIP, MUNRO, HERITAGE, SIRDAR, DON MAID
KNITTING WOOLS

Stockists of PATON'S, COPLEX, LAVENDA
and All High-Class Wools

★ 27, Mill Street, Bideford

Telephone Northam 57

E. W. Gale & Sons

*High-Class
Family Butchers*

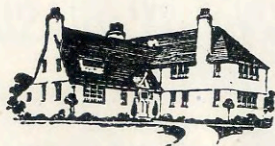
32, Cross Street, Northam
N. DEVON

Established 1920

Telephone : Northam 224

W. H. BADCOCK & SON

BUILDERS and
CONTRACTORS



—
*Repairs in all
Branches*

—
ESTIMATES
SUBMITTED



Sandaway - Northam - Devon

W. J. CORDING & SON

(W. L. CORDING)

*Ladies' and Gentlemen's
Tailors, Breeches Makers
and Men's and Boys'
Complete Outfitters*

Telephone 407



12, GRENVILLE STREET, BIDEFORD

Telephone 18

R. F. FRIENDSHIP FAMILY GROCER

PROVISIONS
TEA AND COFFEE - CONFECTIONERY
FRESH FRUIT
TOBACCO AND CIGARETTES

Kingsley Stores
15, FORE STREET, NORTHAM

'Phone : Northam 35

THE GIFT SHOP

TOBACCONIST, CONFECTIONER, STATIONER and
LIBRARIAN

48, MARKET STREET - - - APPLEDORE

TAW AND TORRIDGE CAFE

20, THE QUAY - - - APPLEDORE

Proprietor : J. S. PEAK

BOBBIE'S WOOL SHOP

(Proprietress : Mrs. G. H. Robertson)

— WESTWARD HO ! —

for

BEST QUALITY WOOLS

Art Needlework — Haberdashery

Ladies' and Children's Underwear

" RISING SUN INN," APPLEDORE

Situated centrally in one of the most picturesque and old-world
fishing villages on the North Devon coast. Ideal for a Restful
Holiday. Home Comforts and Personal Attention

- | | | |
|-----------|-----------|-----------|
| ● FISHING | ● BOATING | ● GOLF |
| ● BATHING | ● RIDING | ● TOURING |

Fully licensed. Elec. light. H. and c. in bedrooms. Good table

Tariff on application to Proprietors—Mr. and Mrs. S. J. PIKE

Telephone : Northam 493

'Phone : Northam 147

LEWIS'S CAFÉ

MORNING COFFEE

Hot and Cold Luncheons Special Afternoon Teas

Agents for Lyons' Ice Cream

WESTWARD HO !

Large Parties Catered for

Taxi Service

REMEMBER YOUR HAPPY HOLIDAY

BY TAKING HOME

DEVON POTTERY

from

The Pottery Shop

(Just two doors above Grenville Street)

22, High Street

Bideford

Also—

ART POTTERY

SOUVENIR GIFTS

WE WELCOME YOUR INSPECTION OF
THIS FINE SELECTION OF

POTTERY

A. L. Taylor

'Phone 871

For Holiday Car Service (Tel. 470) . .

HEARD BROTHERS

(Proprietors : Brindleys Garages, Ltd.)

The Quay Showrooms
BIDEFORD



Main Distributors for North Devon for

MORRIS AND M.G. CARS

★ *Tecalemit Service and Quick Repairs !*

for First-Class Photography . .

★ **STUART J
TURNER**

24, THE QUAY, BIDEFORD
TELEPHONE 1014

★ **24-hour Developing & Printing Service**

FOR YOUR GROCERY,
PROVISIONS AND ALL
GOOD THINGS TO EAT

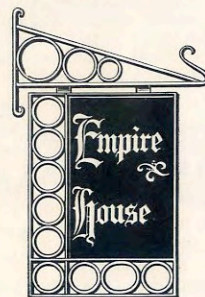
Come to . . .

Empire Stores

Nelson Terrace
Westward Ho!

Proprietor : W. Powell

PHONE NORTHAM 120



Mrs. A. E. Powell

*Personal Attention
H. & C. all Bedrooms
Well Recommended*



2, NELSON TERRACE, WESTWARD HO !

Phone Northam 120

INDEX TO ADVERTISEMENTS

● ACCOMMODATION		Page
Agnella Guest House, Kingsley Terrace, Westward Ho !	8	
Atlantic View, Kingsley Terrace, Westward Ho !	4	
The Chantry, Westward Ho !	52	
Empire House, 2, Nelson Terrace, Westward Ho !	73	
Eversley Guest House, Westward Ho !	6	
Ferndale Hotel, Westward Ho !	6	
Fosketh House, Westward Ho !	6	
Kipling Guest House, Westward Ho !	10	
"Point Garry" Guest House, Westward Ho !	10	
Prospect House, 5, North Street, Northam	76	
Mrs. C. A. Rees, 2, Meeting Street, Appledore	65	
Rockingham Hotel, Westward Ho !	2	
Seafield House, Westward Ho !	8	
"Sunnyside," Appledore Road, Northam	76	
Sunset House, Main Road, Westward Ho !	6	
Tresillian, Raleigh Hill, Bideford	10	
Ulvik, Westward Ho !	10	
AUCTIONEERS, VALUERS, HOUSE & ESTATE AGENTS		
R. Blackmore & Sons, The Quay, Bideford	Back Cover	
Hannaford, Ward & Southcombe, Ltd., 4, Bridgeland Street, Bideford	Map Inset	
A. C. Hooper, 22, Mill Street, Bideford	56	
AUTOMOBILE ENGINEERS		
Elliott & Sons (Motors) Ltd., Kingsley Road, Bideford	62	
Heard Brothers, Broad Quay, Bideford	72	
Kelly & Littlejohns, Raleigh Garage, Bideford	Map Inset	
Nelson Garage, Westward Ho !	46	
BUILDERS, CONTRACTORS, ETC.		
W. H. Badcock & Son, Sandaway, Northam	68	
Arthur Griffey & Son, Cross Street, Northam	76	
BUILDING SOCIETY		
Western Counties Building Society, 1, Grenville Street, Bideford	56	
BUS SERVICE AND COACH TOURS		
Southern National Omnibus Co., Ltd., The Quay, Bideford	62	
BUTCHERS		
C. G. Bradford & Son, The Square, Northam	66	
E. W. Gale & Sons, 32, Cross Street, Northam	68	
CAFES AND RESTAURANTS		
Devon Creameries Cafe, 55, Mill Street, Bideford	Map Inset	
Ennisfarne Restaurant and Tea Garden, Westward Ho !	12	
Gay Adventure Cafe, 108, Irsha Street, Appledore	36	
Lewis's Cafe, Westward Ho !	70	
Taw & Torridge Cafe, 20, The Quay, Appledore	70	
CARAVANS, CHALETS, FURNISHED FLATS		
Braddicks Ltd., Mill Street, Bideford	Map Inset	

CHEMISTS AND PHOTOGRAPHIC DEALERS		Page
Cobley, Northam	63	
M. Sparkes, M.P.S., The Pharmacy, Westward Ho !	58	
COAL MERCHANTS AND HAULIERS		
H. A. & E. J. Littlejohns, Westcombe, Bideford	65	
W. J. Lamey & Sons, Ltd., Bidna Yard, Appledore	63	
FANCY GOODS		
G. Davidson, 3, Nelson Road, Westward Ho !	56	
FUNERAL DIRECTORS		
Arthur Griffey & Son, Cross Street, Northam	76	
GREENGROCERS		
Boyles Supply Stores, Market Street, Appledore	67	
GROCERS AND PROVISION MERCHANTS		
Barretts (North Devon) Ltd., Northam and Westward Ho !	66	
Boyles Supply Stores, Market Street, Appledore	67	
Empire Stores, Nelson Terrace, Westward Ho !	73	
J. A. Friendship, Main Road, Westward Ho !	60	
Kingsley Stores, 15, Fore Street, Northam	69	
HOLIDAY CENTRE		
Westward Ho ! Holiday Centre	Map Inset	
● HOTELS		
Belle Vue Hotel, Buckleigh, Westward Ho !	4	
Cleavelands Hotel, Northam	5	
Dormy House Hotel, Westward Ho !	2	
Duart Hotel, Bideford	7	
Ennisfarne Hotel, Westward Ho !	1	
Highfield Manor House Hotel, Northam	3	
Tanton's Hotel, Bideford	11	
Yeoldon Hotel, Northam	9	
Youngaton Hotel, Westward Ho !	Inside Front Cover	
INNS		
Golden Lion, Cross Street, Northam	63	
Rising Sun Inn, Appledore	70	
IRONMONGERS		
Meredith & Son, 18, High Street, Bideford	64	
JEWELLERS		
Thomas & Son Ltd., 21, Mill Street, Bideford	61	
KNITTING WOOL SPECIALISTS		
Bobbie's Wool Shop, Westward Ho !	70	
Chubb's Wool Shop, 27, Mill Street, Bideford	67	
GENTLEMEN'S AND BOYS' TAILORS AND OUTFITTERS		
W. J. Cording & Son, 12, Grenville Street, Bideford	69	
LAUNDRIES		
Buckleigh Laundry, Westward Ho !	Inside Back Cover	
NEWSAGENTS, STATIONERS AND BOOKSELLERS		
Truscott's Library, The Quay, Bideford	64	

NEWSPAPERS		<i>Page</i>
Bideford & North Devon Gazette		65
PHOTOGRAPHIC SPECIALISTS		
R. L. Knight, Ltd., Boutport Street, Barnstaple	Map Inset	
Stuart J. Turner, Bridgeland Street, Bideford		72
POTTERY		
The Pottery Shop, 22, High Street, Bideford		71
SCHOOLS		
Edgehill		39
Stella Maris		40 and 41
TOBACCONISTS AND CONFECTIONERS		
The Gift Shop, 48, Market Street, Appledore		70
R. Laundon, 7, High Street, Bideford		46
WINE AND SPIRIT MERCHANT		
Wickham & Co., 21, High Street, Bideford		60

ADDITIONAL ACCOMMODATION:

Mrs. Day, "Sunnyside," Appledore Road, Northam.
Full Board and Bed and Breakfast.
Mrs. George Ross, Prospect House, 5, North Street,
Northam. Board Residence, Bed & Breakfast, High Tea.

Telephone NORTHAM 212

Arthur Griffey & Son

BUILDERS, CARPENTERS
and UNDERTAKERS
Cremations Arranged



Cross Street, Northam
DEVON

The BUCKLEIGH LAUNDRY

Situated on high ground in open country, this Laundry is devoted to high-class laundry work and dry-cleaning. Collection and delivery over a wide area



WESTWARD HO!

Telephone - - 112 Northam