

R. Blackmore  
and Sons

*Auctioneers*  
*Valuers*  
House and  
Estate Agents

REMOVAL CONTRACTORS  
AND WAREHOUSERS

Bideford, N. Devon

Telegrams: Blackmores, Quay, Bideford.  
Telephone: Bideford 4133/4

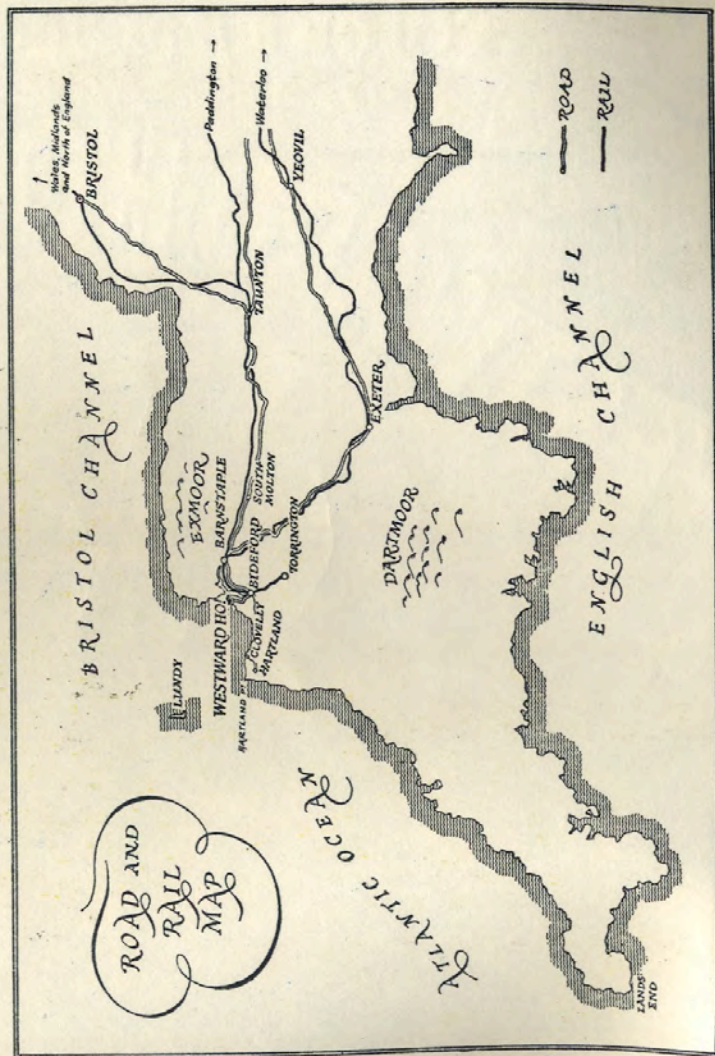
COMPLIMENTARY COP.

OFFICIAL GUIDE  
to  
**WESTWARD HO!**

DEVON

*Safest Sea Bathing  
in Glorious North Devon*

**3 MILES OF GOLDEN SANDS**



# Westward Ho!

in a Nutshell

**W**onderful golden sands—3 miles long.

**E**asily reached by train or bus or road.

**S**afest bathing on the North Devon coast.

**T**ents, caravans, hotels, guest houses, bed & breakfast.

**W**eather best in British Isles.


**A**n ideal spot for fishing, golfing, bathing, sailing.

**R**ight on the sea and right for your holiday.

**D**on't delay, book right away.

**H**owever the weather you'll find it a pleasure.

**O**nly Westward Ho ! can offer so much.



*Westwara Ho!*  
*Northam and Appledore*



OFFICIAL  
GUIDE

*Issued by*  
NORTHAM U.D. COUNCIL,  
COUNCIL OFFICES,  
NORTHAM, NORTH DEVON



*Visitors or intending residents*  
*requiring further information about*  
*any of the three resorts mentioned*  
*in this handbook should write to :*  
PUBLICITY OFFICER,  
COUNCIL OFFICES,  
NORTHAM, NORTH DEVON

Printed and Published by  
GAZETTE PRINTING SERVICE  
at 5, GRENVILLE ST., BIDEFORD  
Telephone Bideford 2615  
for the Northam U.D. Council

## CONTENTS

(Illustrations in Italics)

	<i>Page Nos</i>
<i>Road and Rail Map to Westward Ho !</i> ..	<i>Inside Front Cover</i>
Westward Ho ! in a Nutshell .. .. .	1
<i>Panoramic View of Westward Ho !</i> .. .. .	2
Westward Ho ! Offers .. .. .	5
<i>The Rock Pool</i> .. .. .	6
<i>A Safe, Happy Holiday</i> .. .. .	7
Westward Ho ! Today and Yesterday .. .. .	8
<i>A lovely evening, with tide full in</i> .. .. .	9
<i>Aerial View of Golf Course</i> .. .. .	10
Northam .. .. .	11
<i>Looking Along the Pebbleridge</i> .. .. .	12
<i>A sunny stroll along the Promenade</i> .. .. .	13
Appledore .. .. .	14
<i>Aerial View of Appledore and Estuary</i> .. .. .	15
<i>Appledore from Instow</i> .. .. .	16
<i>North Devon Road Map</i> .. .. .	17
Trips by Coach, Car or Bus .. .. .	18-20
<i>A happy group</i> .. .. .	21
Safe bathing (with photo of Lido) .. .. .	22
<i>All the fun of surfing</i> .. .. .	23
Boating and sailing (with photos) .. .. .	24
Water Ski-ing (with photos) .. .. .	25
Bowling and Cricket (with photos) .. .. .	26
Fishing (with photos) .. .. .	27
Golf—a lively challenge (with photo) .. .. .	28
Horse Riding (with photo) .. .. .	29
Putting and Tennis (with photos) .. .. .	30
Football—Association and Rugby (photos) .. .. .	31
Walks (with photo) .. .. .	32
<i>The Magnificent Cliff Walk</i> .. .. .	33
Hotels, Guest Houses, Flatlets, Sites, etc. .. .. .	34-82
List of Apartments, Caravans, etc. .. .. .	83-84

There is a coloured section in the centre of the Guide, flanked by a key plan of the district and street plans of Westward Ho! Northam and Appledore.

*The panoramic view of Westward Ho ! on Page 2 is by A. C. Littlejohns, Bideford.*

## Westward Ho!



OFFERS firstly a glorious sand beach three miles long and sloping gently into the sea, making it the safest bathing beach in North Devon.

The children enjoy making sand castles and paddling in the sea, and parents can relax in deck chairs without the worry of danger.

Behind the beach stands the famous Pebbleridge—three miles long—which holds the sea back from the Burrows, a large green expanse on to which you can drive your car to within a few yards of the sands.

Pony rides, surf-riding and sand yachting are also available on the beach.

When you fancy an ice cream or cup of tea, kiosks and cafes are close at hand. Shops are handy for your post-cards, buckets and spades and all the necessary for gloriously lazy days on the beach.

When the day is done it is only a few minutes' walk to any of the hotels or camp sites or guest houses.

When evening comes how about a stroll over the lovely Kipling Tors where you will get a most wonderful view of the bay with Baggy Point to the North, Hartland Point to the West and in the distance where the sun is setting, Lundy—the romantic rocky island, famous for smugglers in the past and for a never-closing bar in the present.

On to a game of putting on one of the two putting courses, a game of tennis, a variety concert or a dance or a drink at one of the well-appointed bars.

To-morrow brings another day and why not explore the beautiful countryside around—take the car or book a coach tour to Clovelly or Exmoor, Dartmoor, Cornwall, or a score of other entrancing spots. Or there are regular sailings to Lundy from Ilfracombe and Clovelly, and occasionally from Bideford.

What a glorious thought and may we help you to enjoy your holiday in North Devon's fascinating **WESTWARD HO!**



THE ROCK POOL, WESTWARD HO!

(R. L. Knight)



A SAFE, HAPPY HOLIDAY FOR ALL THE FAMILY

(A. C. Littlejohns, Bideford)

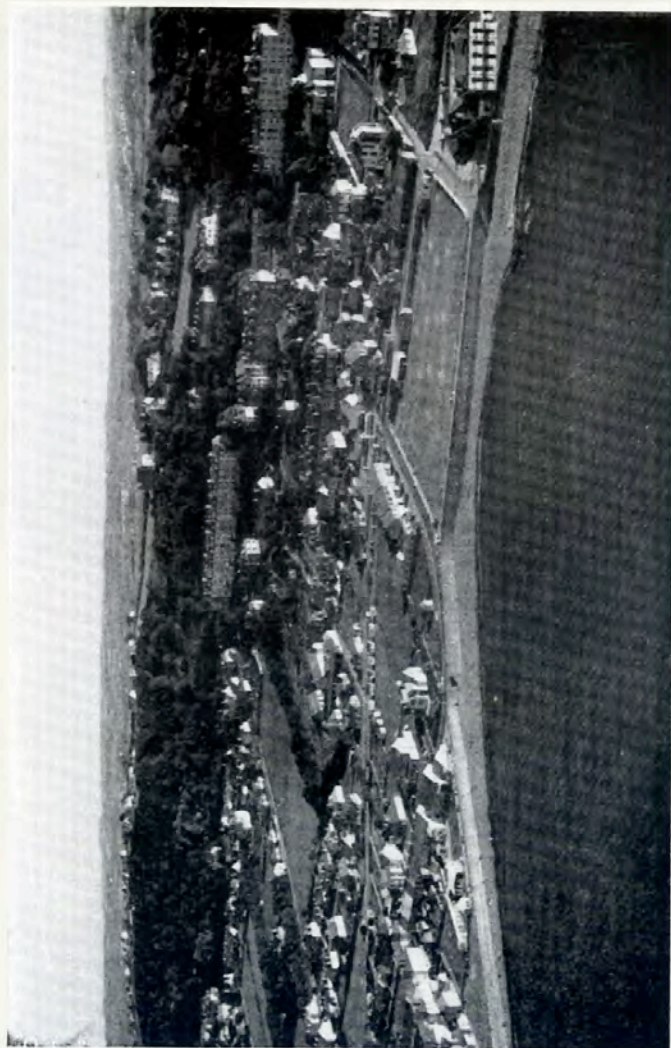
## WESTWARD HO ! TO-DAY . . .

Driving from London, one crosses Salisbury Plain with its ancient Stonehenge—through the lovely countryside of Hampshire, Dorset and Somerset until “ Devon, Glorious Devon ” is reached and on to North Devon where, nestling in Bideford Bay, one finds WESTWARD HO ! which proudly boasts of its magnificent beach and safest bathing.

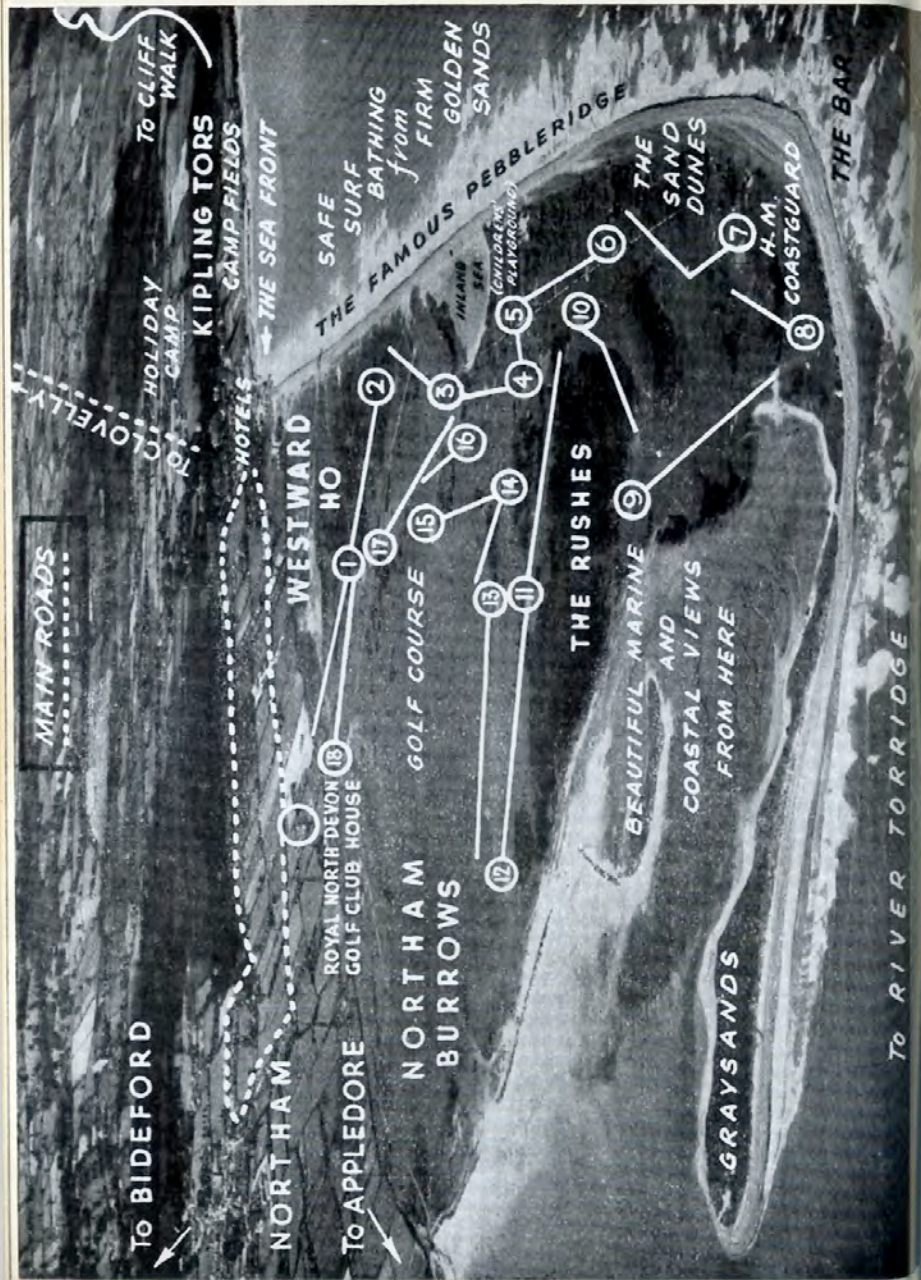
Steeped in history but alive to the present day holiday needs, one will find ample accommodation for bed, breakfast, etc., with shops, cafes, bathing pools, putting greens, tennis courts, golf course, good parking facilities, in fact everything to suit everyone's taste.

## . . . AND YESTERDAY

Historically, we think of stirring days for the magic words “ WESTWARD HO ! ” bring visions of a bygone Elizabethan era, when from Bideford those little ships of Grenville, Raleigh, Drake and Hawkins and a hundred more set sail “ Westward Ho ! ” to the Spanish Main. We derive our name from these beginnings, when the might of England lay in the near piratical activities of the men of Devon. The argument rages to this day—“ Did Bideford or Barnstaple send most ships to meet the Spanish Armada ? ” It is thought that the first tobacco to be landed in England was landed on Bideford Quay, then the third largest port in England, by Sir Walter Raleigh. We know by the Church records that Raleigh brought a North American Indian to Bideford where he was baptized and died within twelve months. Nearer present day, Rudyard Kipling was at School at Westward Ho ! and readers of *Stalky & Co.* will delight in walking where he walked and seeing the famous Kipling Tors about which he wrote so delightfully.



A LOVELY EVENING AT WESTWARD HO ! WITH THE TIDE FULL IN



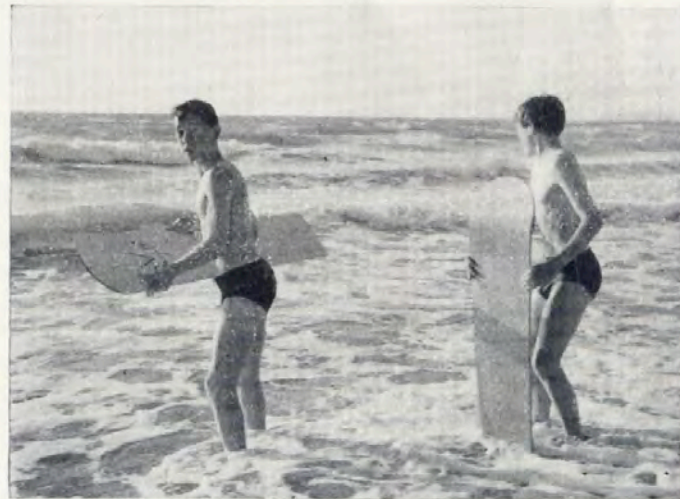
## Northam

This village is an integral part of a Westward Ho! holiday.

Northam and golf are synonymous. The Royal North Devon Golf Club—the earliest of England's seaside courses—was founded in 1864 and Northam is very proud of the late J. H. Taylor, five times Open Champion and possibly the greatest professional ever, who was born in Northam.

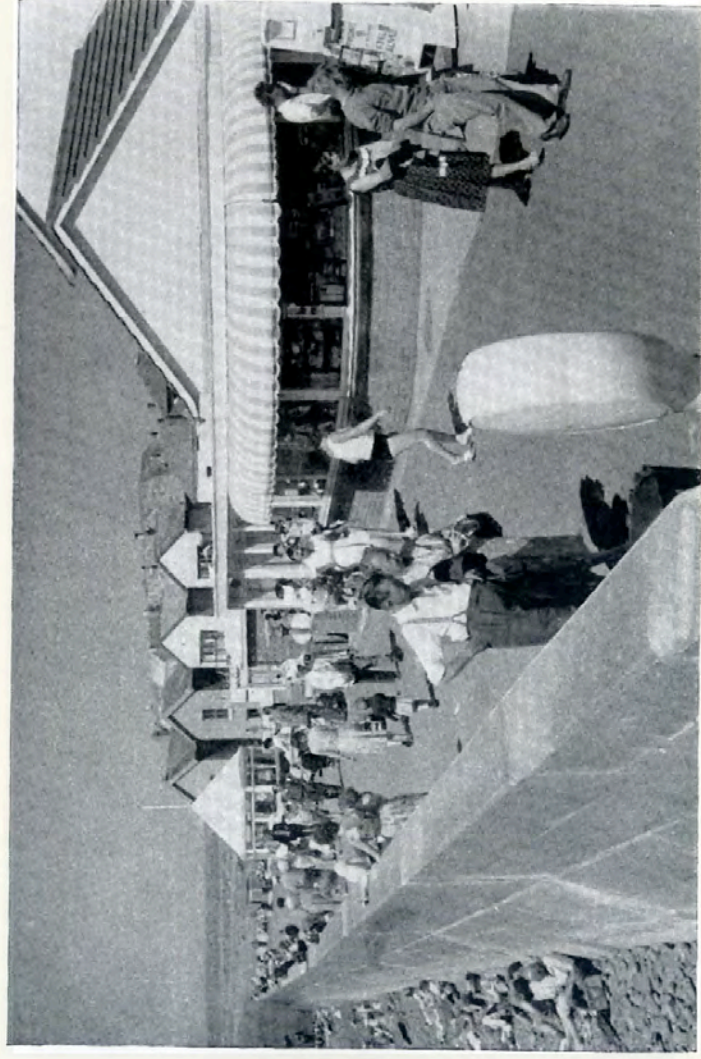
The sketch map on the opposite page shows how nature has laid out the land for a very lovely course, enclosed by the sea and river and so handy for Dad to pop the children and Mum on the beach while he saunters round the course.

Elizabethan history again is prominent and Kingsley's *Westward Ho!* leads us to Northam Parish Church where Salvation Yeo lies buried and to Burrough House, the home of Amyas Leigh.





LOOKING ALONG THE PEBBLERIDGE TOWARDS WESTWARD HO ! (A. C. Littlejohns, Bideford)



A SUNNY STROLL ALONG THE PROMENADE

(A. C. Littlejohns, Bideford)



# Appledore



A short distance from Northam, passing on the way the historic "Bloody Corner," lies Appledore.

But stay a while and let us read the notice at "Bloody Corner" which states :—

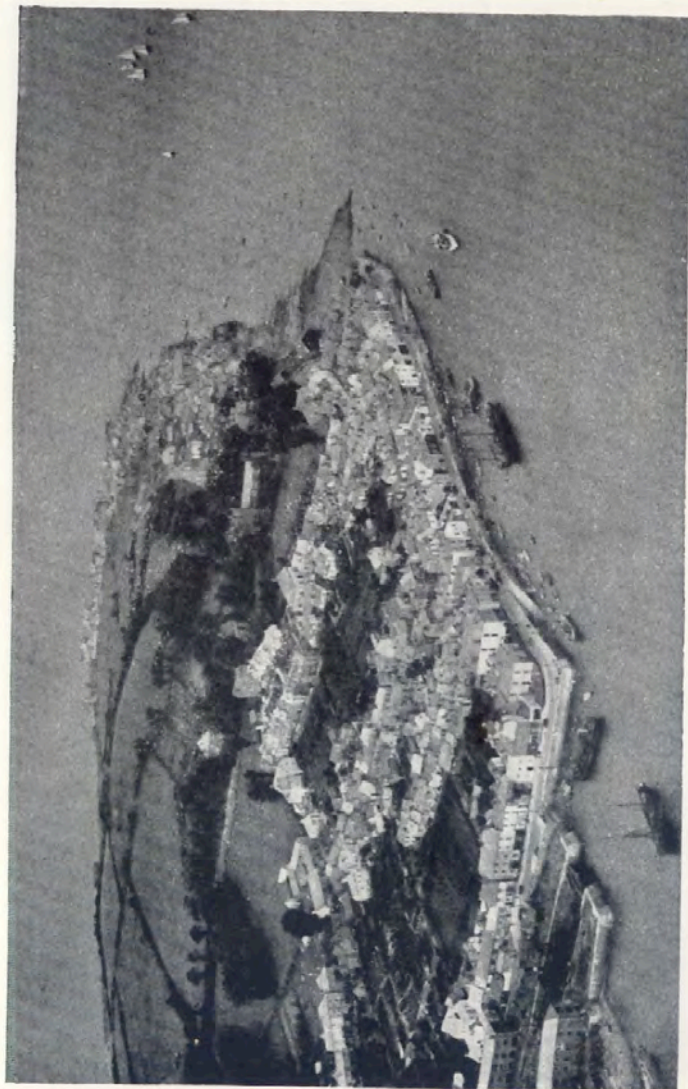
" Stop, Stranger, Stop,  
Near this spot lies buried  
King Hubba the Dane  
Who was slain by  
King Alfred the Great  
In a bloody retreat."

King Hubba the Dane was defeated and slain in 878.

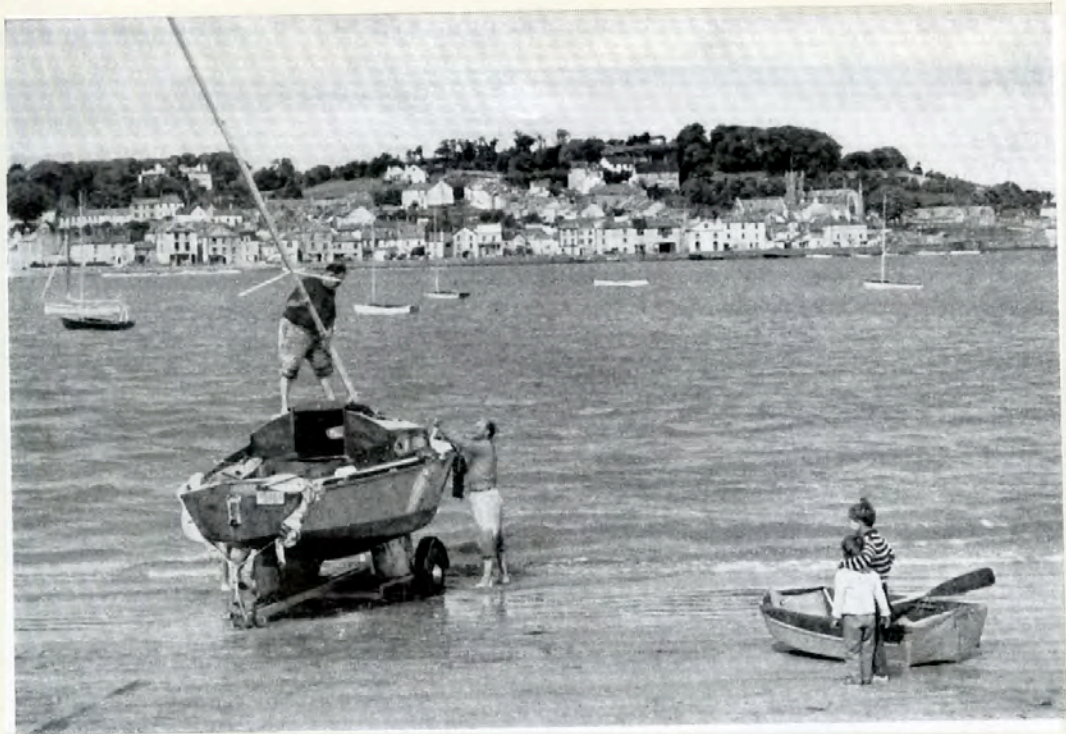
And so to Appledore, a quaint seaport with narrow streets and many an old sailor with whom to pass the time of day or tempt into spilling an old sea yarn.

The sea and boats are Appledore's heritage and who can say how many Appledore lads have sailed the seven seas under so many famous captains. And to-day, at her moorings in Appledore Pool, the lifeboat rides easily, ever ready to answer a call for help.

Suffice it is to say that if it's fishing, sailing or boating you are looking for, Appledore can most certainly supply it.



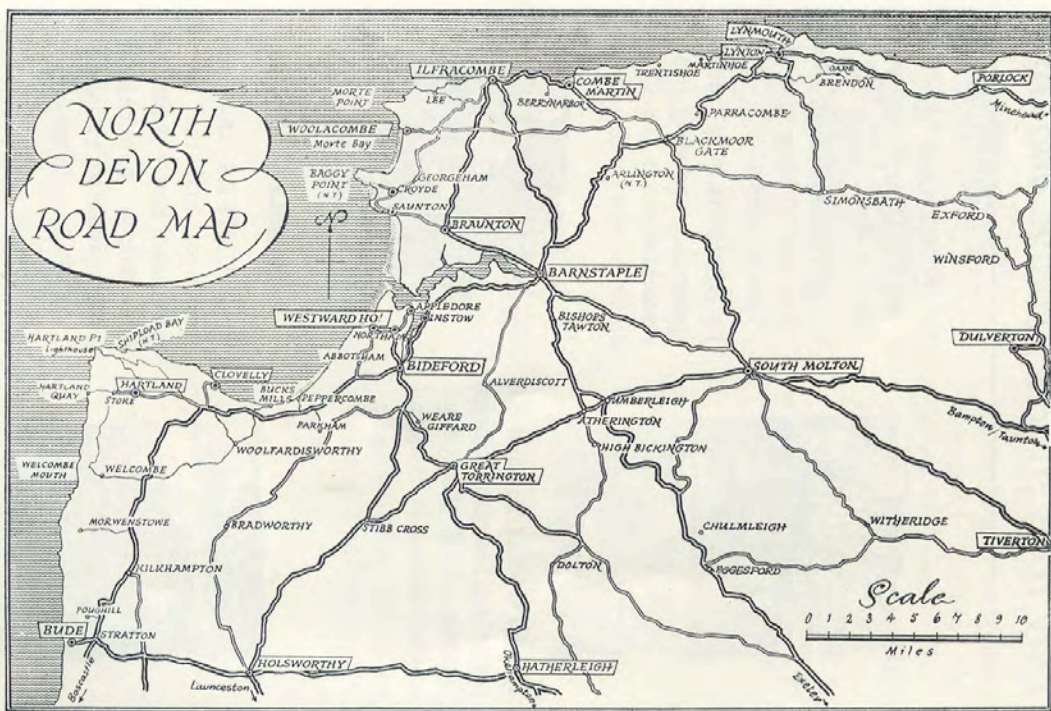
LOOKING WEST OVER QUAIN APPLEDORE (with a sailing race in the Estuary)



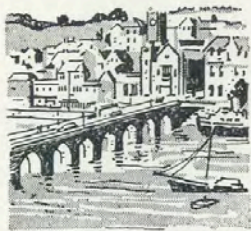
APPLEDORE FROM INSTOW

*E. Ludwig, John Hinde Studios*

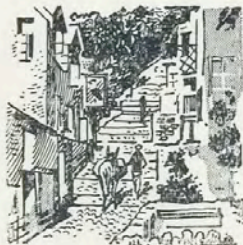
17



## Day trips by car, coach and 'bus



To CLOVELLY, and its world - famous cobbled street. This cliffside village is unique in its appeal.



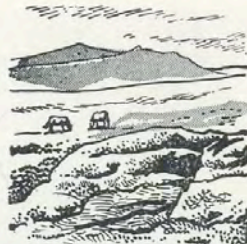
To HUNTERS INN and Exmoor and the lovely Woody Bay. Miles of moorland, a delightful inn. Return via Ilfracombe.



To NORTHAM for its historic Church and wonderful views.

To APPLEDORE for boating and fishing and the quaint streets.

To BIDEFORD for shops, cinema, bowling and markets.

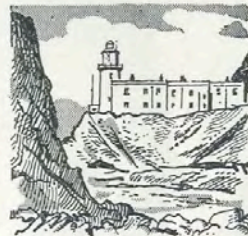


To HARTLAND QUAY and Lighthouse for magnificent coastal scenery that will take your breath away.

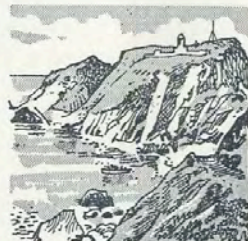


To LUNDY, the fascinating little island, by boat from Bideford or steamer from Ilfracombe.

To DARTMOOR, through Hatherleigh, Moretonhampstead, seeing the prison, and on to Torquay. Return through Exeter.



To LYNTON and Lynmouth—a most enjoyable run to the scene of the tragic floods and to see the wonderful transformation now.



## IT'S THE IDEAL CENTRE . . .

For COACH TOURS to many other beauty spots and places of interest in Devon, Cornwall and Somerset. Seats may be booked at Westward Ho! Northam or Appledore.

Below are given some examples of the tours with earliest times of leaving and latest times of returning in parenthesis—these times should be checked on booking.

**PLYMOUTH**, via Torrington, Hatherleigh, Okehampton, Tavistock, Princetown, Yelverton (9.30 a.m., 8 p.m.).

**TORQUAY** via Okehampton, Moretonhampstead, and Newton Abbot, back through Teignmouth, Dawlish, Exeter (7.45 a.m., 8.15 p.m.).

**EXMOOR and MINEHEAD** via Bratton Fleming and Dunster and returning through Lynmouth (9.30 a.m., 8 p.m.).

**BOSCASTLE and TINTAGEL** via Clovelly Cross, Kilkhampton, back through Widemouth Bay and Bude (9.30 a.m., 7.45 p.m.). This trip is sometimes extended to NEWQUAY when the times are 8.30 a.m., 7.45 p.m.

**DOONE VALLEY and LYNMOUTH** via Bratton Fleming and Simonsbath, returning through Blackmoor Gate (9.30 a.m., 7.45 p.m.).

**LOOE and POLPERRO** through Launceston and Liskeard and back over Torpoint Ferry and Plymouth (8.30 a.m., 8.30 p.m.).

**WELLS and CHEDDAR CAVES** by way of Taunton and Glastonbury and home through Bridgwater (8.30 a.m., 9.15 p.m.).

**EXMOUTH** over Beaford Moor, through Winkleigh and Exeter (9.45 a.m., 7.30 p.m.).

**FALMOUTH and TRURO** over Bodmin Moor, back through St. Austell and Launceston (8.30 a.m., 8.30 p.m.).

Shorter, half-day tours include those to Clovelly and Hartland, Bray Valley and South Molton, Croyde, Woolacombe and Ilfracombe, Lynton and Hunters Inn, in most cases earliest leaving time being 1.30 p.m., latest returning time 7 p.m., except Lynton (8 p.m.).

In addition there are many pleasant evening tours, times being 5.30 p.m. to 9.30 p.m., including Melbury and Parkham, Newton Tracey and Barnstaple, Shebbear and Petrockstowe, Torridge Valley, Umberleigh.



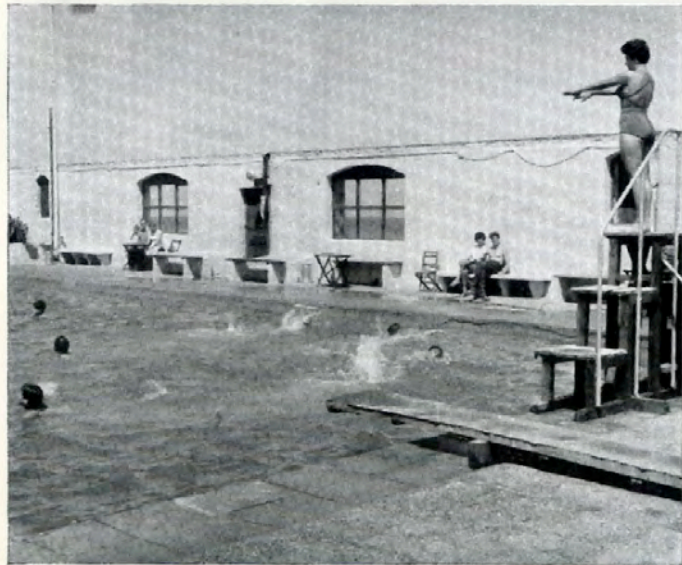
THE PEBBLERIDGE MAKES A BACKGROUND FOR THIS HAPPY GROUP (A. C. Lirtlejohns.)

## *Safe bathing in sea or pool*

Westward Ho ! has two bathing pools, one fully open, among the rocks (*see page 6*), and The Lido, sheltered from the breezes but open to the sun (*see below*) . . . and then there's the sea—so clean, so safe, so exhilarating !

## *All the fun of surfing too !*

For the surfing enthusiast, Westward Ho ! is ideal and for those who have yet to taste the joy of this fine sport, the Atlantic rollers provide a safe, yet thrilling introduction. Surfboards can be hired locally.



(A. C. Littlejohns, Bideford)



ALL THE FUN OF SURFING, TOO !

## *Boating and Sailing . . .*

Boats are available for hire at Appledore, Instow and Bideford for trips up the river about six miles, and around the lovely estuary.



*(A. C. Littlejohns)*



## *Water Ski-ing too!*

For sailing, boating (motor or rowing) and water ski-ing, the estuary of the twin rivers Taw and Torridge is perfect and essentially safe.



*Photos)*



## Bowling

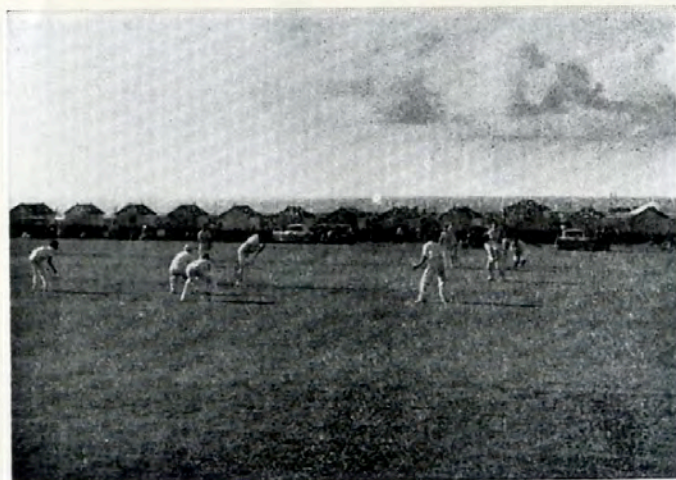
There are two bowling greens at Bideford, one owned by Bideford Bowling Club, the other by Bideford Borough Council. There is an annual tournament in the first week in August.



## Cricket

(A. C. Littlejohns)

Cricket can be seen at Westward Ho! on Sundays, Wednesdays and Saturdays, on a beautifully situated ground with the sea in the background. Chairs are available.



## Fishing

Rod and line fishing from Westward Ho! rocks, from boats at Appledore, in local rivers and reservoirs. Arrangements can be made for sea fishing. Net salmon fishing takes place at Appledore and up-river.



The Westward Ho! rock pools make a paradise for prawning and lobstering.



## *Golf . . . A lively challenge !*

In the Royal North Devon, Westward Ho ! can boast one of the greatest golf courses in the world—and visitors are warmly welcomed. In superb surroundings, with great natural hazards and the invigorating sea breezes, it presents a lively challenge to all golfers.

The course includes dykes, and bushes of great sea rushes the height of a man, whilst the mobile hazards are the sheep of the "Potwallopers" (the commoners) which keep the turf so short that it does not need mowing.



THE FAMOUS FIFTH !

(R. L. Knight



(A. C. Littlejohns, Bideford)

## *Horse Riding*

There are riding stables at Westward Ho ! and at Northam and the country round about provides many enjoyable rides.

And on the sands, pony riding is exceptionally popular, especially among the children.

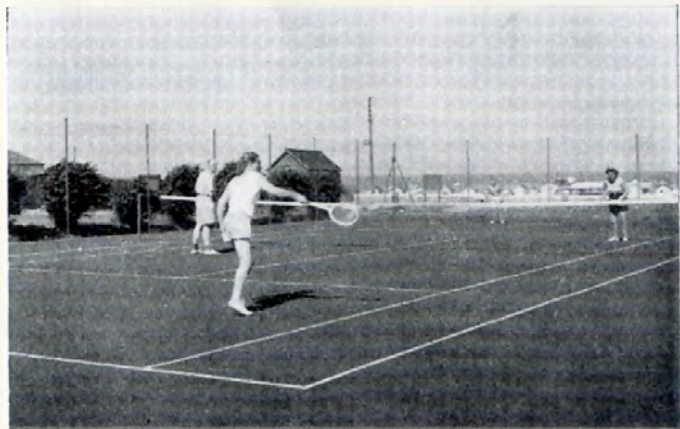
In the season, good hunting can be had with the Stevenstone Foxhounds, and the Torrington Farmers' Hunt, while further afield there is hunting with the Tetcott and the Hatherleigh Harriers, and, of course, in the Exmoor direction good sport with the Devon and Somerset Staghounds.





**PUTTING.**—There are two 18-hole courses at Westward Ho!—one right on the sea front and the other (*pictured above*) a few minutes' walk from the sea. Course fee 6d. including score cards and use of putter and ball.

**TENNIS.**—As well as private courts open to the public, there are three newly laid hard courts at Westward Ho!



*Photos)*

30

(A. C. Littlejohns, Bideford

## Football

Come early or late and there will be attractive Association Football matches at Appledore, Northam and Bideford and Rugby Football at Bideford.



*Photos)*

31

(A. C. Littlejohns, Bideford

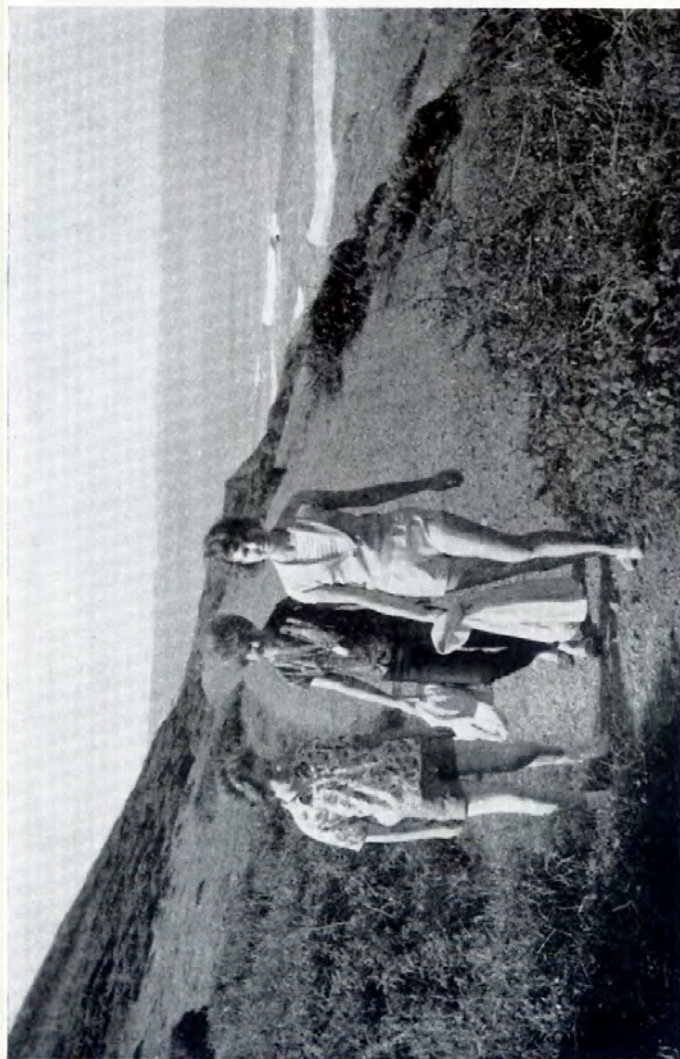
## Walks

The district abounds in delightful walks, but two stand out above all—along the cliffs at the west end of Westward Ho ! where the scenery is truly great (*see opposite*) and along the river path from Appledore to Bideford, one of the views from which is seen below.

A pleasant easy walk, full of interest, is eastward along Golf Links Road, turning to the left at the end, and then across the golf course to the pebbleridge at Sandy Mere, from where fine views of the surrounding hills, bay and river are obtained.



(A. C. Littlejohns)



WESTWARD HO! THE MAGNIFICENT CLIFF WALK

(A. C. Littlejohns)

Telephone : BIDEFORD 4171

# Grenville Arms Hotel

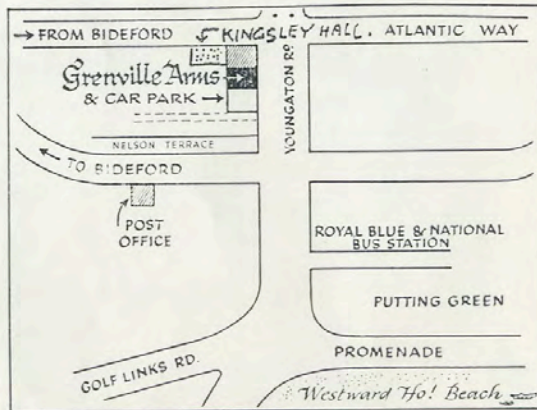
FULLY LICENSED

BUILT 1750

FIRST RATE SERVICE. ONE MINUTE SEA

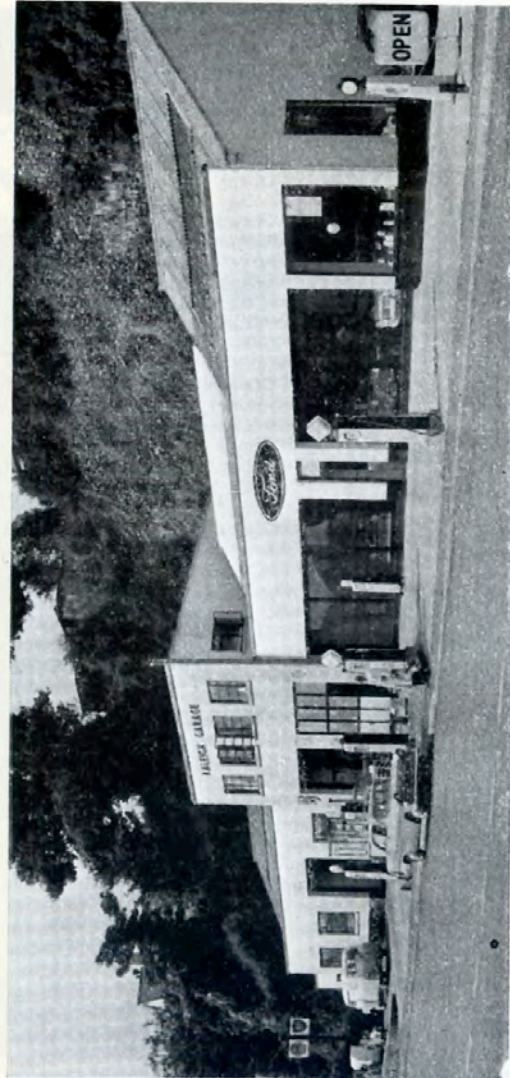
*The favourite rendezvous for visitors at*

## Westward Ho!



OPEN FOR BED AND BREAKFAST  
ALL THE YEAR ROUND

Resident Proprietors : Mr. and Mrs. A. H. SMITH  
(late of Worcester)



YOUR CAR will enjoy the holiday, too, if it's SERVICED by .

**RALEIGH GARAGE (Bideford) Ltd.** FORD SALES  
AND SERVICE  
NORTHAM ROAD, BIDEFORD. Tel. 2384.5. (On Main Road to Northam, Westward Ho! and Appledore)



RECOMMENDED

# KIPLING HOLIDAY FLATS

DIRECTORS: M. G. AND B. M. GARDNER

of WESTWARD HO!



This interior shows the emphasis on comfort

- \* 45 Flats—and every flat has lovely sea views
- \* Spacious accommodation with 1, 2 or 3 bedrooms.
- \* A few minutes from the sands, sea and shops
- \* Cheaper rates for Children
- \* Pets welcome at no extra charge
- \* Fully equipped Laundry for residents' use
- \* Refrigerators in larger type flats
- \* Television available in every flat

Send for our interesting brochure to:  
Resident Directors, Kipling House, Westward Ho! Devon]

EVERYTHING YOU HAVE ALWAYS WANTED IN A HOLIDAY FLAT—SO CLEAN, COMFORTABLE and INEXPENSIVE!

**BOOK WITH ABSOLUTE CONFIDENCE!**

You will find a friendly welcome awaiting you when you arrive. A Spotlessly Clean, nicely furnished and well equipped flat. A genuine interest in your comfort and welfare given by the Directors and Staff. The unobtrusive but efficient organisation is at your service from the day you make your booking until the time of your departure. Our whole aim is to provide you with—

**A REAL HOME OF YOUR OWN BY THE SEASIDE!**



The Lounge/Diner of a 3-bedroom flat.

**SUNSET**  
**HOLIDAY FLATLETS**  
 ATLANTIC WAY - WESTWARD HO!



In own grounds, overlooking sea  
 Beach 5 mins. walk

**COMFORTABLE, WELL-FURNISHED**  
**HOLIDAY FLATLETS**

FREE CAR PARKING  
 CHILDREN WELCOME

*Props. : Mr. & Mrs. T. McCosh, Phone Bideford 4459*



***Economical Family Holidays***

Beautifully situated in the midst of ten acres of private woodland and a mile from the sea, modern furnished bungalows, each with its private bath, hot and cold water, indoor sanitation. Two, three and four-bedroom types as desired.

Fully licensed club house (*pictured above*), games room, children's swimming pool.

*Brochure on request.*

**LENWOOD NORTHAM**

Telephone Bideford 4372

N. DEVON

## Auctioneers and Estate Agents

RESIDENTIAL PROPERTIES  
HOTELS            GUEST HOUSES  
FARMS            SMALLHOLDINGS  
BUSINESSES        BUILDING SITES  
INDUSTRIAL SITES        FACTORIES

**John Lewington & Co.**  
**19, The Quay,**  
**Port of Bideford**        Tel. 3166 (2 lines)

THE  
**WESTERN COUNTIES  
AND BARNSTAPLE  
BUILDING SOCIETY**

WILL ASSIST YOU

- ★ **TO PURCHASE YOUR HOUSE**  
*Liberal advances with prompt service.*
- ★ **TO SAVE WITH SAFETY**  
*Interest with tax paid. Ease of withdrawal.*

*Full Particulars:*

A. A. GOODMAN, A.C.I.S., Manager and Secretary  
20, THE QUAY, BIDEFORD        Phone 2421



## *Family Holidays in Britain!*



**WESTWARD HO!**  
*HOLIDAY CENTRE*

Magnificent ballroom, licensed bars, billiard room, comfortable lounges, films, the Centre's Concert Party, tennis courts, putting green, children's playground, spacious dining room, good and plentiful food. Chalets fitted H & C and toilet.



**KIPLING TORS**  
*SELF-CATERING HOLIDAY CENTRE*

In this section of Westward Ho! Centre, you have your own brick-built villa, fully equipped for up to six people—bath and toilet, gas cooker, electric light, television, and refrigerator. You are also invited to enjoy the entertainment facilities at Westward Ho!

*Send for free brochure, illustrated in colour.*

**WESTWARD HO! HOLIDAY CENTRE**  
**near Bideford, North Devon**

Member of N.F.P.H.C.        Terms are lower in May and September

## LONG BEACH HOLIDAY FLATLETS



NEAREST ACCOMMODATION TO THE BEACH  
**Long Beach Holiday Flatlets, Westward Ho!**

Clean comfortable holiday flats.  
 3 miles of Golden Sands. Safe Bathing.  
 Children and Pets welcome.

S.A.E. for brochure to: J. M. CUMMINGS,  
 Nelson House, Westward Ho! Tel. Bideford 4148.  
 Photo) (E. Sweetman and Son Ltd., Tunbridge Wells

## Westward Ho!

### HOLIDAY CHALET/BUNGALOW

Comprising—Lounge, 2 Bedrooms, Kitchen, and Bathroom with W.C.

Hot Water System, Refrigerator, Cooking and Lighting, all Electric.

Accommodate 7 Persons.

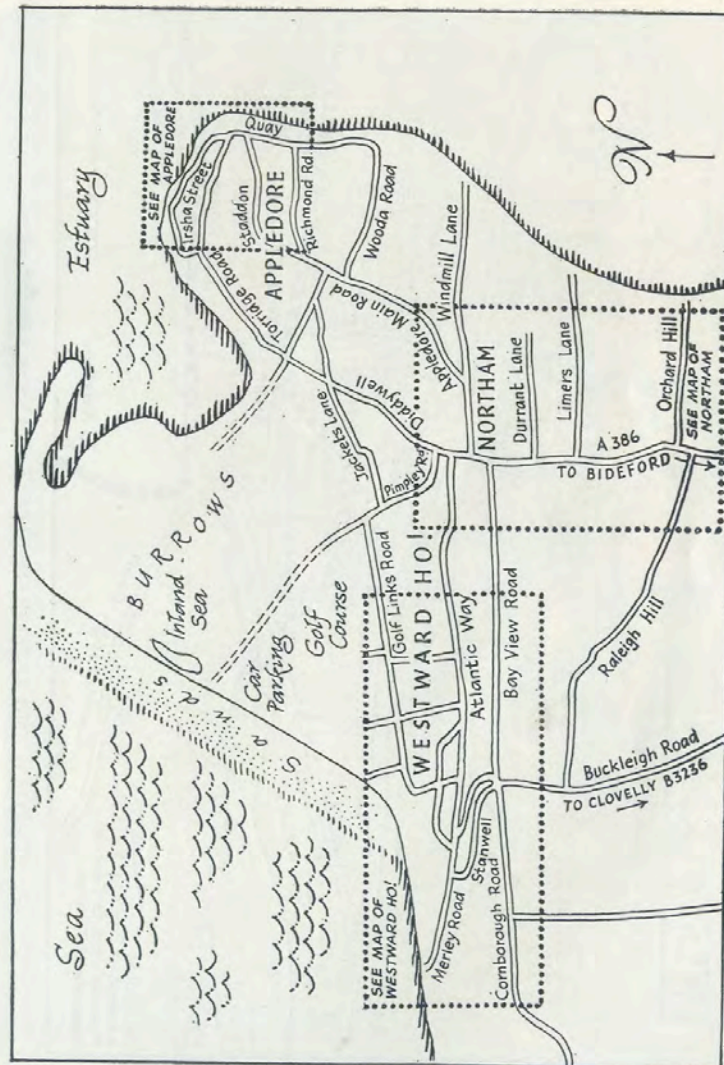
Parking Space.

Two minutes from Sea Front with pleasant Sea View, near Bathing Pool, Swimming Bath, Golf, Putting, Tennis, Cricket and Fishing.

Shops, Restaurants three minutes away.

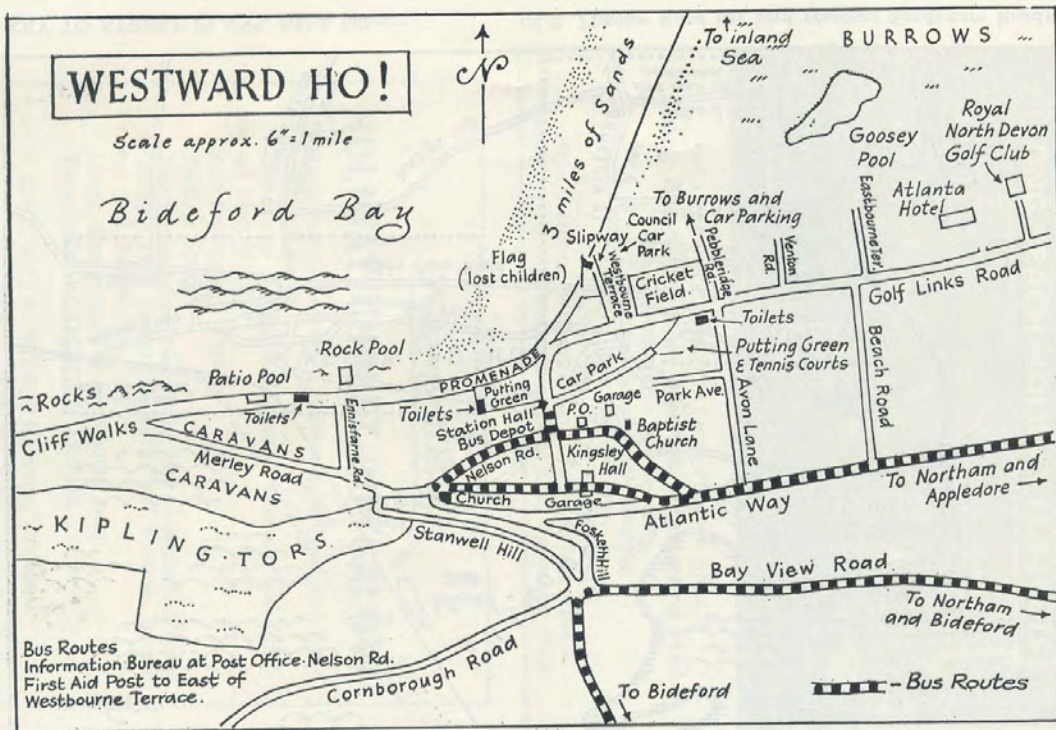
Three miles of GOLDEN SANDS.

S.A.E. to C. A. BEER, "Glentorr," Bideford.  
 Phone : Bideford 2216.



KEY TO STREET PLANS, which follow :

(N.B. Pimpley Road has been renamed Sandymere Road)



NORTHAM AND APPLIEDORE STREET PLANS on following pages.



THE SHORE, WESTWARD HO! DEVON

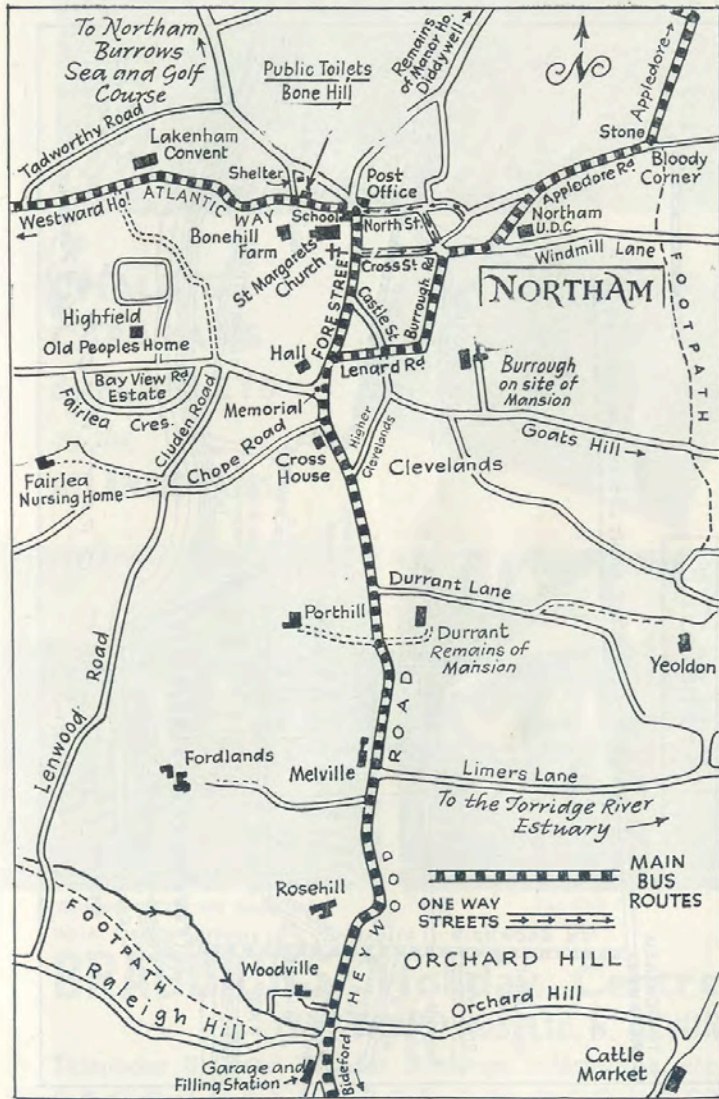


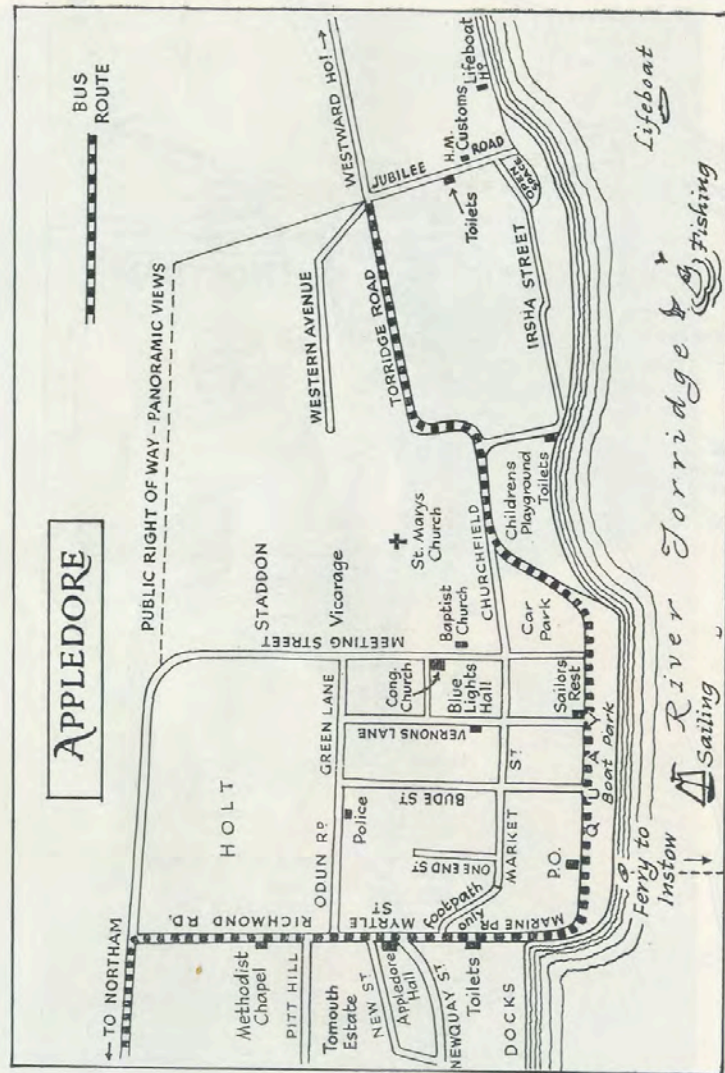


WESTWARD HO! DEVON

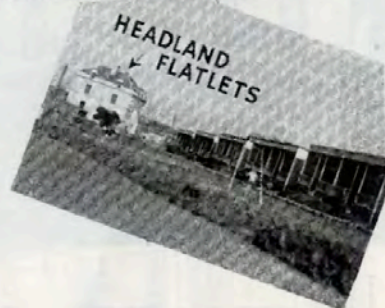


APPLEDORE QUAY, DEVON





for  
**CHALETS  
 CARAVANS  
 & FLATLETS**  
 on the  
**ATLANTIC COAST**



Elizabethan Club and Restaurant



The Club Bar

Write: Dept. N.G.

**BRADDICKS Holiday Centre**  
 (WESTWARD HO!) Ltd. N. DEVON

Telephone Bideford 3263 for Bookings, information, etc.  
**BROCHURES FREE ON REQUEST**



## KNAPP HOUSE

### NORTHAM, DEVON

(Historic)

Ideally situated in 10 acres, giving carefree self-service holidays in flats, flatlets, chalets or caravans, about 1 mile from sea.

32 UNITS ACCOMMODATING UP TO 9 PERSONS.

Shop, Licensed Club, Games Room, Billiards, Tennis, Laundry. Car parking for over 50 cars.

Every flat has electric fire, radio, refrigerator, and electric or gas cooker.

All beds have internally sprung or rubber foam mattresses.

Under the personal supervision of the Proprietors, Mr. and Mrs. J. T. Westwood.

Telephone BIDEFORD 4804

WESTWARD HO!

## HOLIDAY BUNGALOWS

Adjoining beach and sea



- ★ BATHROOM and W.C. LOUNGE, 2 BEDROOMS, SEPARATE KITCHEN.
- ★ HOT AND COLD RUNNING WATER.
- ★ T.V., FULL SIZED ELECTRIC COOKER, ETC.
- ★ ACCOMMODATION 4-8 PERSONS.
- ★ BATHING STRAIGHT FROM BUNGALOW.
- ★ PLEASANT SEA VIEWS.

Almost at water's edge yet actually in the Town. Genuine 2 minutes walk to Sea, Shops, Restaurant, Bars, Everything. Children welcome. Free Parking. Special Terms April, May and September.

**Write John Fowler**

**Dept. 17, Devon Coast Holidays, Winkleigh, Devon**

*Tel. Winkleigh 235*

## "RISING SUN INN," APPLEDORE

Situated centrally in one of the most picturesque and old-world fishing villages on the North Devon coast. Ideal for a Restful Holiday. Home Comforts and Personal Attention

- FISHING                      ● BOATING                      ● GOLF
- BATHING                     ● RIDING                        ● TOURING

Fully licensed. Elec. light. H. and c. in bedrooms. Good table  
Tariff on application to Proprs. : Mr. and Mrs. A. C. Woodland  
Telephone : Bideford 4493

## EVERYTHING PHOTOGRAPHIC

### JAMES A. INSLEY

(Official Photographer to Westward Ho! Holiday Centre)

High Street, Bideford

Telephone 2637

Camera Sales & Exchanges



The Ideal Holiday Rendez-vous at Westward Ho! . . .

## PEBBLE RIDGE HOTEL

adjoining the sea-front.

Fully licensed. Two lounge bars (drinks also served in hotel gardens). Enquire terms for flatlets. Phone : Bideford 4404

## GAYSANDS

ATLANTIC WAY, WESTWARD HO! N. DEVON

## LUXURY HOLIDAY FLATS AND FLATLETS

A few minutes only from the Beach



FULLY EQUIPPED & COMFORTABLY FURNISHED  
TO ACCOMMODATE FROM 2 to 6 PEOPLE

A Lovely House with a Most Delightful Rose Garden,  
Lawns and Attractive Grounds of 3 Acres.

Superb Position with Magnificent Views Across the Bay.

FREE CAR PARK IN GROUNDS

WRITE FOR BROCHURE with Full Details (DEPT. G)

Telephone BIDEFORD 3819

Telephone : BIDEFORD 4168

## J. E. Boyles & Son

25, Market Street, Appledore

*Grocers and Greengrocers*

*Speciality : OUR OWN COOKED HAM*



FRIGIDAIRE REFRIGERATION

*Send your holiday order to us for delivery on arrival*

FOR SPEEDY EFFICIENT SERVICE

*Entrust your Car to*

F. C. TWOSE

## The Nelson Garage

**WESTWARD HO !**

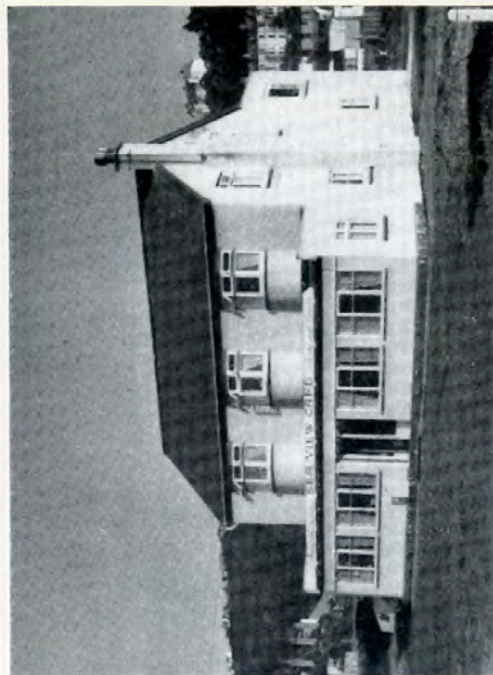
A.A.      PHONE : BIDEFORD 4129      R.A.C.

Repairs to All Makes

New or used Cars for Sale or Hire

B.P./ENERGOL LUBRICATION, WASHING,  
B.M.C. SERVICE, BREAKDOWN, BATTERY and TYRE  
SERVICE. MORRIS DEALER.

*Skilled Staff, under personal supervision, satisfaction guaranteed*  
We will Collect and Deliver your Car at your Convenience



## SEA VIEW

LICENSED RESTAURANT AND GUEST HOUSE  
**Westward Ho !**

Ideal for Bed and Breakfast

—o—

Also

SELF CONTAINED FLAT

(for 5 Persons)

—o—

EXTENSIVE CAR PARK

—o—

THE NEAREST GUEST  
HOUSE TO THE BEACH

—o—

Free Brochure

Personal Supervision

MR. & MRS. B. R. MOLLAND

(Res. Prop.)

Tel. Bideford 4737

## FOSKETH HOUSE

WESTWARD HO!

Boasts one of the most magnificent views on the coast. Here you can relax and enjoy yourselves. Our aim is to ensure you have a happy holiday.

### GOOD FOOD

REASONABLE TERMS

LARGE T.V. LOUNGE

SEPARATE TABLES

NINE BEDROOMS

THREE BATHROOMS

SPRING INTERIOR MATTRESSES

CHILDREN OVER FIVE WELCOME

PARKING SPACE

Five minutes Sea, Buses, Shops.

Bed, Breakfast and Dinner from 7 guineas.

Telephone Bideford 4483.

Proprietor : Mrs. G. King

Long before the charms of the Westward Ho! district became known to holidaymakers throughout the country the . . .

## Bideford & N. Devon Building Society

were giving their friendly, helpful service to the community

SAVING or BUYING, SECURITY IS THE KEYNOTE

Tax paid on investments with ease of withdrawal.

Liberal advances to House Purchasers.

Enquiries welcomed at :

**5, THE QUAY, BIDEFORD**

Est. 1853.

Tel. 3608 TRUSTEE STATUS

Member of Building Societies' Association

## Yeoldon Hotel

NORTHAM



A beautifully appointed Country House standing in 8 acres of grounds overlooking Torridge Valley.

Ideal holiday centre within easy reach of the sea.

Swimming, Fishing, Sailing, Golf, Riding, etc.

Excellent Cuisine

Own Produce

H. and C. all Bedrooms

Central Heating

MODERATE TARIFF

PERSONAL SUPERVISION

OPEN ALL THE YEAR

Telephone and Telegrams :

Bideford 4400

Resident Proprietors : Mr. and Mrs. W. AXON MANSELL

Established 1817

## Wickham & Co. Ltd.

*Wine & Spirit Merchants  
Ale and Cider Bottlers*

A LARGE ASSORTMENT OF  
LIQUEURS IN MINIATURES  
AND LARGER SIZES

**21, High St.  
BIDEFORD**

Telephone 3292/3  
and at HIGH STREET  
ILFRACOMBE Tel. 442

*Daily Deliveries*

Telephone Bideford 2014

## GEORGE BOYLE

LIMITED

THE LEADING GENERAL

*Drapers and Outfitters*

SPECIALISTS IN LADIES' AND  
GENTLEMEN'S WEAR

*Tailors and General House Furnishers*

There are always varied stocks of Holiday  
and leisure wear at

**2, 3 & 4, HIGH ST., BIDEFORD**

## OVERBOROUGH

HOLIDAY FLATS

WESTWARD HO!



*The TV Lounge*

### SELF-CONTAINED HOLIDAY FLATS

to sleep 4-8 persons. Open all the year round.  
Central Heating

Wonderful panoramic views of sea and sands

- ★ SPACIOUS AND COMFORTABLE ROOMS
- ★ GAS FIRES
- ★ H. & C. WATER
- ★ LINEN SUPPLIED

PLEASE BOOK EARLY TO AVOID DISAPPOINTMENT  
CHILDREN AND PETS WELCOME

Write for brochure with full details to Resident Proprietors,  
Mr. & Mrs. F. Wright, Overborough, 18 Atlantic Way,  
Westward Ho!

Telephone: Bideford 4405



## " FERNDALE " *Board Residence*

WESTWARD HO !

Hot & Cold Water

MODERATE TERMS

FACING SEA

BED AND BREAKFAST

*Proprietress*

Mrs. A. M. PETHICK

Free Parking. Tel. Bideford 4196

## HOLIDAY FLATS

ONE MIN. FROM SEA AND SANDS AT WESTWARD HO !  
FULLY SELF-CONTAINED, SLEEP 4/6 PERSONS,  
SEA VIEWS, CLOSE SHOPS, BUSES, Etc.

Also BED AND BREAKFAST, Homely, One minute to Sea  
And TAXI AND 11-SEATER MINIBUS FOR HIRE  
S.A.E. to Mrs. E. ELSTON, 4, Nelson Terrace, Westward Ho!

Tel. Bideford 4193

ENJOY A CAREFREE

## CARAVAN HOLIDAY AT WESTWARD HO !

Well equipped 2, 3, 4 and 5 BERTH CARAVANS  
overlooking the sea, with good site facilities.

Enquiries to:—Mrs. R. SEALY, "Uplands," Orchard  
Hill, Bideford. Tel. Bideford 2661

WESTWARD HO !

## Newly Erected Continental Chalet/Bungalow

Comprising—Lounge, kitchen, two bedrooms, bathroom  
and W.C. ; Hot water system, all electric, fully furnished ;  
Parking space. Up to seven persons accommodated—children  
welcomed. Within seconds of the promenade and sea.

For details write :

P. J. Gooding, 2, Myrtle Gardens, Bideford, Devon.

## DURRANT HOUSE

NORTHAM

Private Hotel and Country Club. A.A. & R.A.C. Approved



Standing in three acres of delightful grounds,  
this lovely Georgian mansion has been entirely  
redecorated and modernised to provide a hotel  
where guests have every comfort.

Frequent buses to Bideford, Westward Ho ! and  
Appledore stop at the gates.

Golf (Royal North Devon course), Fishing,  
Riding, Sailing, Swimming and Surf-bathing are  
all within easy reach.

CHILDREN ARE VERY WELCOME HERE

Telephone and Telegrams :

BIDEFORD 3844

Brochure from Resident Proprietress : Miss C. Halstead

DISPENSING CHEMIST PHOTOGRAPHIC DEALER

# M. SPARKES

M.P.S.

Stockist of YARDLEY, GOYA, MAX FACTOR,  
COTY Etc. PREPARATIONS

**THE PHARMACY** (Nr. Promenade)  
**WESTWARD HO!**

Phone Bideford 2829

B  
E  
A  
C  
H  
W  
E  
A  
R  
  
F  
O  
R  
  
T  
H  
E  
  
F  
A  
M  
I  
L  
Y

SWIMWEAR by JANTZEN, BUKTA, TREND and AVRO

SLACKS  
JEANS  
BLOUSES  
SHIRTS  
NYLONS  
SOCKS  
CRAVATS  
ANORAKS  
SKIRTS

## BEACH SHOES FOR ALL THE FAMILY

The largest selection  
in the district

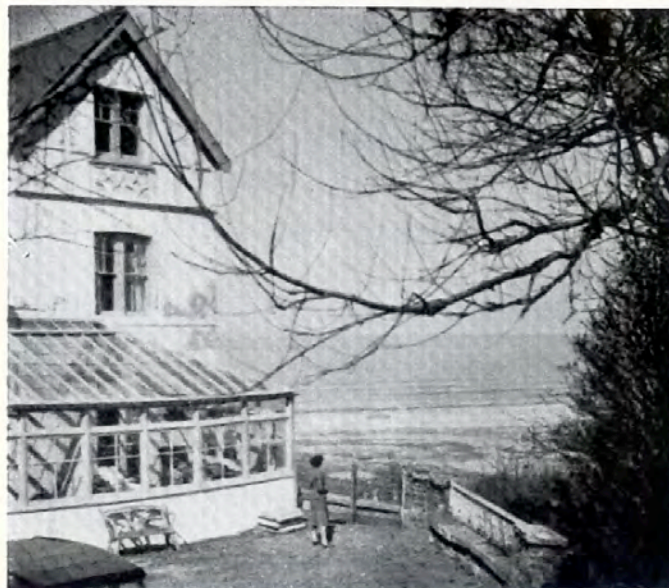
OPEN SUNDAY MORNINGS  
DURING JUNE, JULY and AUGUST

## The Beachwear Shop

1, NELSON TERRACE, WESTWARD HO!

AGENTS for LADYBIRD CHILDREN'S WEAR

56



THE PLACE WITH THE VIEW.

# STANWELL WESTWARD HO!

Overlooks the entire Bay with its famous sands and Pebble Ridge, and has views stretching from Lundy Island in the West to Baggy Point and the fringe of Exmoor in the East. 5 mins. from sands, shops and buses, and 2½ miles from Bideford.

- MODERN SELF-CONTAINED FLATS, including bathroom, h. and c., sleep 2, 4, 6, or 8 people.
- BUNGALOWS, 5 rooms, sleep seven.
- BUNGALETTES, 3-rooms, sleep five.
- CHALET to sleep two.
- CARAVANS in private and sheltered position. All Mains Services. Bath, Showers, Washbasin.

Write for illustrated brochure (Tel. Bideford 4526).

Proprietors: Mr. and Mrs. K. EVERS

57

OUR AIM—TO MAKE YOUR HOLIDAY MORE ENJOYABLE

## KINGSLEY HALL

COMMUNITY CENTRE

WESTWARD HO!

*What's on . . .*

<b>Monday</b>	<b>BINGO</b> Doors open 7.30. Commence 8 p.m.
<b>Tuesday from July</b>	<b>FOLLIES</b> (For details see poster)
<b>Wednesday</b>	<b>BINGO</b> Doors open 7.30. Commence 8 p.m.
<b>Thursday</b>	<b>OLD TIME DANCE</b> Admission 3/-, 8-11 p.m.
<b>Friday</b>	<b>BINGO</b> Doors open 7.30. Commence 8 p.m.
<b>Saturday</b>	<b>BINGO</b> Doors open 7.30. Commence 8 p.m.
Refreshments available at all promotions	

BINGO MEMBERSHIP 1/- PER ANNUM

ENROLL AT THE POST OFFICE

## HAPPY CAREFREE HOLIDAYS

Self-contained Holiday Flatlets overlooking Sea. Licensed Club, Free Parking, Children and Pets welcome. All facilities h. and c., Gas Fires. Shop on Premises. Everything for your Comfort and Enjoyment.

AT WESTWARD HO!

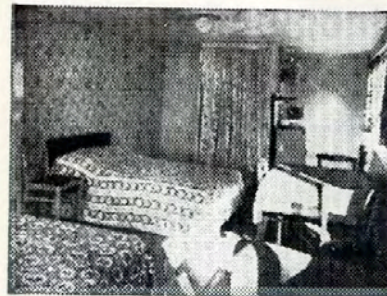
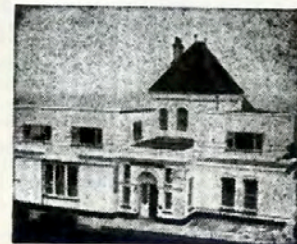
ONE MINUTE FROM  
GOLDEN SANDS

\* \* \*

ON 'BUS ROUTE

\* \* \*

NEAR ALL  
AMENITIES AND  
ENTERTAINMENTS



REDUCED  
RATES

MARCH  
APRIL  
MAY and  
OCTOBER

Book early to avoid  
disappointment.

*Interior of Flatlet*

Booking Office :

## Atlantic Flatlets

7, ATLANTIC WAY

WESTWARD HO! NORTH DEVON. Tel. Bideford 4115

## BAY VIEW GUEST HOUSE

2, Eastbourne Terrace, Westward Ho!

ON LEVEL, CLOSE SEA, SANDS, GOLF LINKS

Bed and Breakfast. Evening Meal if required. Moderate terms. Free Parking. *Personal supervision: Mrs A. W. Bolton*

## LUXURY HOLIDAY CHALET

This new Chalet adjoins the sea front, with beautiful marine views. There are 2 double bedrooms, one with double bed and one with twin beds, and a large lounge with studio couch which converts to a double bed.

The kitchenette is fully equipped with new electric cooker, kettle and iron, and there is a plentiful supply of kitchen utensils. There is a bathroom and separate toilet. Parking space provided.

*Write for brochure: OGDEN, Herons Lea, Westward Ho!*

Phone: Bideford 2431

For BEST HOUSE COAL and ALL FUELS

Consult—

## H. A. & E. J. Littlejohns

COAL MERCHANTS and HAULIERS

Personal Attention and Prompt Service given to all Orders

*Regular Deliveries to the following areas:*

Bideford, Northam, Westward Ho! Appledore, Instow, Fremington, Newton Tracey, Horwood, Alverdiscott, Dolton, Beaford, Putford, Buckland Brewer, Parkham, Bradworthy, Woolsery, Higher Clovelly, Hartland, Bucks Mills, Horns Cross, Fairy Cross, Abbotsham and Torrington.

WESTCOMBE - - - BIDEFORD

ORDER OFFICE: 51a, Mill Street, Bideford.

## HOLIDAY FLATLETS

HOMELY, COMFORTABLE, FULLY FURNISHED AND EQUIPPED

—o—

Spring Interior Beds, H. and C. Running Water, Gas Cookers and Fires

On level. Five minutes Sandy Beach. Free Parking.

CHILDREN WELCOME. STAMP FOR BROCHURE

ALSO 4-BERTH CARAVAN ON TORVILLE CAMP.

WRITE TO MRS. L. COMER,

3, EASTBOURNE TERRACE, WESTWARD HO!

FOR BROCHURE or TELEPHONE BIDEFORD 4799

FOR THE PERFECT HOLIDAY BY THE SEA TRY A

## CARAVAN THIS YEAR AT WESTWARD HO!

Caravans are situated in a small select Garden Site set amongst flowers and shrubs, and each has a perfect sea view. The Caravans have Electric Lighting, are Fully Equipped and all have running water, mains gas and showers. Mains sanitation.

Personal Supervision

Cleanliness Guaranteed

FOR FREE BROCHURE WRITE TO DEPT "N"

### Sunray Caravan Gardens

Westward Ho! Devon

Phone: Bideford 4678

# RIVERSFORD

## PRIVATE HOTEL

LIMERS LANE, NORTHAM,  
BIDEFORD, N. DEVON. Tel. BIDEFORD 4239

The gardens of Riversford slope down to the River Torridge with dinghy park, slipway, and car park.

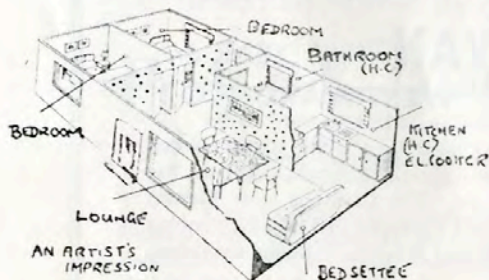
### EVERY COMFORT & PERSONAL ATTENTION

H. and C. all rooms. Gas or Electric Fires.  
Residents' Lounge.

T.V. and Sun Lounge with magnificent river views.

Resident Proprietors : Mr. and Mrs. I. H. Wickersham

## Newly opened — SANDY BURROW HOLIDAY BUNGALOWS



New and select site with only a few bungalows in spacious, pleasant field. The site practically adjoins the famous Burrows and Golf Course with five minutes' walk to safe and lovely Westward Ho! Beach.

Bungalows which sleep 2-6 comprise 2 bedrooms, W.C., bathroom (h. and c.), lounge, separate kitchen (h. & c. and electric cooker).

Plenty of room for children to play. Free parking.

Brochure with pleasure from : Mrs. W. F. Withecombe, Bidna Farm, Northam, N. Devon. Phone Bideford 4429. Special terms for April, May and September.



## ROSSKERRY ORCHARD HILL BIDEFORD

Standing in two acres of ground. Ideal touring centre for Devon and North Cornwall.

WINTER OR SUMMER — A WARM WELCOME !

A brochure with pleasure Resident Directors :  
or phone Bideford 2872 Mr. and Mrs. A. V. McCULLAGH

# SANDYMERE

## Holiday Bungalows

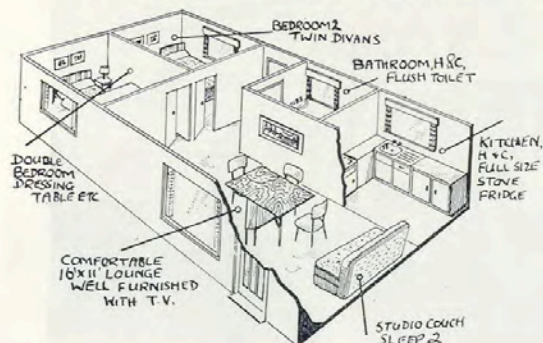
- ★ Accommodate 4/7 persons
- ★ Lounge, 2 bedrooms, bathroom and W.C., separate kitchen
- ★ Hot and cold water in kitchen and bathroom
- ★ All electric
- ★ T.V. available

Well-spaced semi-detached bungalows on small private site across the Burrows from Westward Ho! Sands.

Mrs. M. N. ROBERTS,  
"SANDYMERE"

SANDYMERE ROAD, NORTHAM. Tel. Bideford 3975

## WESTWARD HO! HOLIDAY BUNGALOWS



ADJACENT  
BEACH  
and  
SEA

Location—  
between  
Nelson Road  
and Ennis-  
farne Road.  
(See West-  
ward Ho!  
Street Plan).

- Bathroom and W.C., Lounge, 2 bedrooms, separate kitchen.
- H. & C. running water, T.V., full size electric cooker, fridge, etc.
- Accommodation 6 persons.
- Bathing straight from bungalows. Almost at water's edge, yet actually in the town. Genuine 2 minutes' walk to sea, shops, restaurant, bars. Free parking. Special terms March, April, May, September.

M. J. SHUTE, 38, North View Avenue, Bideford. Telephone 3657.

## F. Johns & Son

INSTOW

Phone 78

YACHT CHANDLERS

Appledore - Instow Ferry Service

Moorings available

Small craft transport up to 2 tons

MARLOW ROPES  
TALURIT SPLICING  
CORDAGE  
FITTINGS  
LIFEJACKETS  
ANCHORS

INTERNATIONAL PAINTS  
RIGGING  
PADDLES  
OARS  
FISHING TACKLE  
SAILING WEAR

ALL IN STOCK

HOLIDAY ACCOMMODATION AVAILABLE

## ROSLYN CARAVAN GARDENS

offer you

FIRST CLASS CARAVANS FITTED WITH ELECTRIC  
LIGHT, MAINS GAS, FULL OVEN COOKERS AND  
MAINS RUNNING WATER

CLEANLINESS GUARANTEED

N.C.C. Approved, Select, Very Attractive Garden  
Site, with Lovely Sea Views from all Caravans.

Promenade under 100 yards

Brochure from ROSLYN CARAVAN GARDENS (Dept. G)  
MERLEY ROAD, WESTWARD HO! N. DEVON.  
Telephone BIDEFORD 2833

ENJOY YOUR HOLIDAY AT . . .

## SUNNY VIEW CARAVAN PARK

Golf Links Road, Westward Ho!

Five minutes from Sea, Sands and Shops, Tennis,  
Golf, Putting, Cricket and Riding Stables

Mains gas, water, showers, baths and toilets; and all  
modern conveniences. Public telephone. TV. Room.  
Camp Shop and Licensed Restaurant.

Perfect surroundings—No overcrowding

PERSONAL SUPERVISION

Write for Tariff

J. W. Martin (Mr.)

S.A.E.

Phone : BIDEFORD 3348

## *Seadrift* HOLIDAY FLATS

72, ATLANTIC WAY, WESTWARD HO !

★  
Sleep 4 to 8 persons

(5 minutes from sea)

SPACIOUS ROOMS. FULLY EQUIPPED.  
INTERIOR SPRING MATTRESSES.  
SEPARATE KITCHENS. CONSTANT HOT WATER.  
OVERLOOKING BAY. SECLUDED LAWNS

★  
Phone Bideford 4321 or S.A.E. for Brochure to  
Mrs. HAYES, "Seacot," Station Road, Westward Ho !

## ATLANTIC SANDS TRAILER PARK

WHY NOT SPEND YOUR HOLIDAYS WITH US ?

We have one of the finest views in North Devon and yet only six minutes walk to the beach which has 3 miles of golden sands with safe bathing and surf riding. Golf course nearby, shop on site with farm produce. Flush sanitation. Hot and cold showers. We look forward to your paying us a visit. S.A.E. for brochure. SITES—SALES—CARAVANS FOR HIRE.

**ATLANTIC SANDS TRAILER PARK**  
CORNBOROUGH ROAD WESTWARD HO !  
North Devon Tel. BIDEFORD 4774

## BUCKLEIGH PINES

BUCKLEIGH CROSS, WESTWARD HO ! Tel. Bideford 4783  
BUNGALOWS and CHALETs

Situated in private wooded garden, very secluded ; ample room for cars ; fully equipped (except linen) ; mains gas and electricity ; flush toilets ; bathrooms : 5 mins. shops and beach. Shop on site : swing and sandpit for children. Dogs welcome. Send S.A.E. for Brochure.

Resident Proprietors : Mr. & Mrs. Grover

## "Culberkeys"

GUEST HOUSE

BUCKLEIGH WESTWARD HO !

Comfortable and attractive house. Good food. H. & C. in bedrooms. Bed, breakfast and dinner. Free parking.  
Special rates for children. No restrictions.

Write Mrs. D. E. Miller. Tel. Bideford 4608. R.A.C. Listed

## ◆ TRUSCOTT'S LIBRARY

FOR BOOKS, STATIONERY, FANCY GOODS  
ARTISTS' MATERIALS

Largest selection of Local Views in the district.  
MAPS and GUIDES, NEWSPAPERS and MAGAZINES

THE QUAY, BIDEFORD Phone 2343

## HOLIDAY BUNGALOW

ADJACENT BEACH AND SEA. TO SLEEP 6 PERSONS  
BATHROOM & W.C., LOUNGE, 2 BEDROOMS, KITCHEN.  
Electric lighting, heating, cooking, hot water, refrigerator.  
SAFE BATHING STRAIGHT FROM BUNGALOW.

Shop on site. Television and Games Room. Easy access shops,  
buses, etc. Free Parking.

SPECIAL TERMS APRIL, MAY, SEPTEMBER  
Write R. A. BRYANT, 69, Allington Rd., Southville, Bristol 3.

# THE CHANTRY

WESTWARD HO!



Two minutes from Sea and Bus Stop. Ideal for kiddies. Lovely Sands and Bathing Facilities. Car Space. Terms : 6 - 6½ gns. Reduced Terms for Children. Cot, High Chairs available.

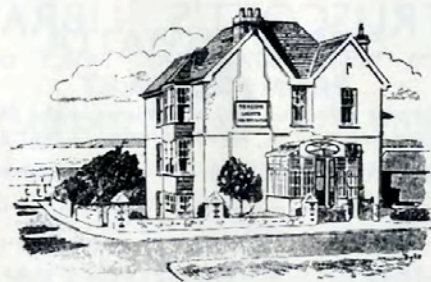


Bed & Breakfast and Evening Dinner

Proprietors

Mr. & Mrs. WILLETTS

Telephone : Bideford 4605



## BEACON LIGHTS FLATLETS

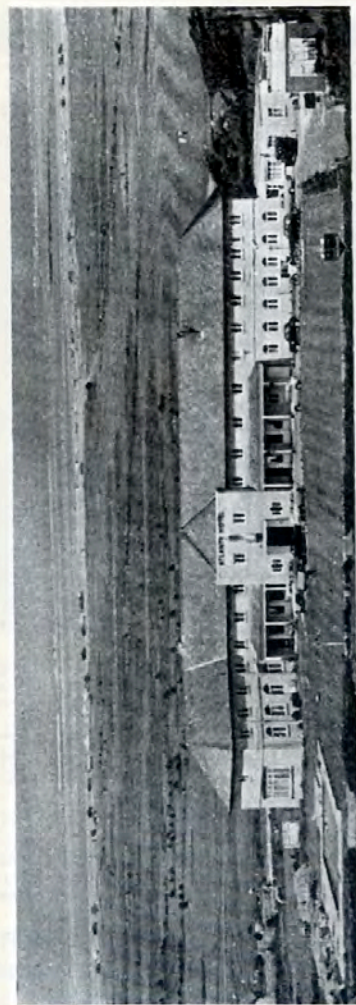
Ideal position on sea-front, within half-minute of bathing beaches, adjacent to shopping centre, 'bus terminus, etc.

Reasonable terms. Apply Westward Properties Ltd., The Shrubby, Westward Ho !

# The ATLANTA HOTEL

Signpost Recommended

A.A., R.A.C. Appointed.



## HOTEL AND GOLDEN BAY

The most modern hotel on Devon's Atlantic Coastline and unequalled for the amenities it has to offer for your pleasure. Standing in 10 acres of smooth grassland close by the magnificent beaches of Westward Ho !

- Swimming Pool
- Ample Parking
- Tennis
- Games Room
- Private Cinema
- FRESH PRODUCE DAILY FROM EXTENSIVE KITCHEN GARDENS
- Stables
- Night Porter
- Golf
- Ballroom

Terms 11-17gns. (according to room and season). Suites available.

Coloured Brochure on request.  
SUN — SANDS — SURFING.

ATLANTA HOTEL, WESTWARD HO ! Bideford 4288.



## *The Store with the Stores*

To make your Holiday Shopping easy and pleasant, shop at the most modern equipped Store in the District

For :—  
GROCERY  
PROVISIONS  
FRUIT  
VEGETABLES  
FROZEN FOODS OF ALL KINDS  
BREAD  
FRESH MORNING ROLLS  
CAKES and PASTRIES  
MEAT PASTIES, PIES, SAUSAGE ROLLS  
COOKED MEATS, EXCELLENT VARIETY  
FRESH MILK, STERILISED MILK  
FULL OFF LICENCE FOR WINES, BEERS,  
SPIRITS

*All this plus Excellent Service at . . . .*

## **EMPIRE STORES**

**NELSON TERRACE WESTWARD HO !**

Proprietor W. POWELL

Phone BIDEFORD 4120

SEND US AN ORDER AND YOUR GOODS WILL  
BE DELIVERED READY FOR YOUR ARRIVAL

## A.A. **Belle Vue Hotel** R.A.C.

BUCKLEIGH, WESTWARD HO !  
(Residential Licence)



Ideally situated, five minutes from the sea, in two acres of pleasant secluded grounds with delightful gardens, tennis court, and putting green. A very restful atmosphere prevails. The hotel is tastefully furnished and decorated, and for the comfort of guests, there is a licensed bar in one of the lounges and another lounge with television

H. and C. in all bedrooms  
Spring interior mattresses  
Bed lights fitted  
Noted for good food

Sunbathing Patio  
Children welcomed  
Parking facilities  
Good touring centre

Film shows are arranged in season  
A games room is situated in the grounds  
Safe bathing, golfing, fishing, surfing, all close to hotel.

Brochure on request from proprietors  
Mr. and Mrs. L. H. Grimsley. Tel. Bidford 4468

For Holiday Car Service (Tel. 3304) . . .

## HEARD BROTHERS

(Proprietors : Brindleys Garages, Ltd.)

The Quay Showrooms  
BIDEFORD



Main Distributors for North Devon for  
**MORRIS AND M.G. CARS**

★ *Shellubrication Service and Quick Repairs !*

Daily Services  
Bristol

Regular Services  
London

for . . .

TRANSPORT & WAREHOUSING

## LAMEY & SONS LTD

APPLEDORE . DEVON

Daily Services  
Somerset, Devon & Cornwall

Telephone :  
Northam 3546-7

## Golden Bay Bars

WESTWARD HO !

Telephone Bideford 4477

Situated opposite church and overlooking sea



### FULLY LICENSED FREE HOUSE

Large selection Beers, Wines and Spirits including Flowers, Red Barrel, Worthington, Whitbreads, M. & B. etc. not forgetting Youngers Draught Bitter and Guinness.

Friendly, happy atmosphere assured as our aim is to please you. Enjoy a drink on the sun patio or a chat with the locals in the bar, or relax in the Zodiac Lounge.

Let your Hair Down. Sing and Dance in the SILHOUETTE ROOM. Music every night.

Hot Pasties, Sausage Rolls, etc. cooked and served fresh daily.

*Resident Owners :* Mr. and Mrs. A. L. Pipe (Iris and Alf.)

ENJOY A CAREFREE HOLIDAY AT WESTWARD HO! IN A

### MODERN CONTINENTAL CHALET/BUNGALOW

Fully equipped for 6 (except linen) comprises: Lounge, kitchen, 2 bedrooms, bathroom and W.C. All Electric. H. & C. T.V. Close to Promenade and Beach with lovely views. Parking Space.

S.A.E. Brochure: Mrs. I. CARPENTER, 39, North View Avenue, Bideford. Phone Bideford 2755.

COME AND BROWSE

50,000

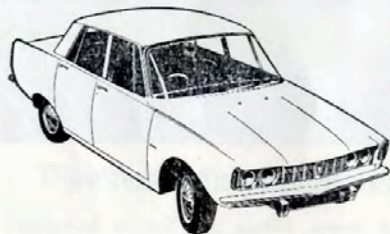
### SECOND-HAND BOOKS

ROBERT HARPER & DAUGHTER

3, WESTBOURNE TERRACE, WESTWARD HO!

(near the Slipway)

Phone: Bideford 4464



AND FOR THE  
BEST  
IN SERVICE  
GO TO

**ELLIOTT'S**  
of BIDEFORD

PHONE BIDEFORD 2546



SALES AND SERVICE

ROVER · LAND ROVER · AUSTIN · SINGER

# THE PINES

ATLANTIC WAY, WESTWARD HO!



## HOLIDAY FLATS & FLATLETS

Standing in own grounds of nearly 6 acres of gardens and woodlands and with a magnificent sea view

- ① Self-contained
- ② Well furnished
- ③ Fully equipped
- ④ All bed linen supplied
- ⑤ Spring interior mattresses
- ⑥ Modern oven cookers
- ⑦ Gas fires
- ⑧ Hot and cold running water
- ⑨ Every comfort
- ⑩ Free parking
- ⑪ Personal supervision
- ⑫ Cleanliness guaranteed
- ⑬ T.V. Hire Service
- ⑭ Terms moderate

Brochure free from

Dept. N., The Pines, Atlantic Way, Westward Ho! Devon.  
Phone: Bideford 4789

## "CONTINENTAL CHALETS"

LUXURY HOLIDAY BUNGALOW AT WESTWARD HO !

Fully furnished for six persons : Lounge, two bedrooms, kitchen, bathroom, W.C. Free parking. Shops close at hand. Ideal for children with : Direct access to sea front, television, games rooms, lawns, etc.

Full details from :—

S. ALFERT, 34, Woodville Gardens, Gants Hill, Ilford, Essex.

## SELF-CONTAINED HOLIDAY FLATS

with all modern conveniences — one minute from sea and sands

### WESTWARD HO !

SLEEP 2/7 PERSONS. SEA VIEWS. CLOSE SHOPS, BUSES, ETC.

S.A.E. to Mrs. R. BRADFORD, 8, NELSON TERRACE, WESTWARD HO ! Tel. BIDEFORD 3832

## LESLIE BOSHER & Co.

F.V.I., F.C.I.A.

Agents for

NEW BUNGALOWS,  
RESIDENTIAL AND BUSINESS  
PROPERTIES IN THE AREA

18, BRIDGELAND STREET  
BIDEFORD Tel. 3241/2

Incorporated Auctioneers and Estate Agents

## ★ Star Holiday Chalets ★



### SUPERIOR HOLIDAY CHALET BUNGALOWS

4- 5- and 6-Berth with 4 Rooms and Home Comfort.  
All Main Services with Electric or Gas Cooker. Own  
Inside Toilet.

All with Television and Radio inclusive.

COMPLETELY SELF CONTAINED

## ★ Star Holiday Caravans ★

BEST IN THE WEST



4- 5- and 6-Berth Caravans on well-spaced privately-owned site near miles of Golden Sands and Safe Bathing. Each Caravan has Electric Light, Water direct to Sink and Main Drainage. Gas Cookers and Radio. Larger Caravans with Television. Modern Flush Toilets, Hot Showers and Launderette.

CAMP SHOP

Write for fully illustrated brochure of Chalets and Caravans to—  
STAR HOLIDAYS, GOLF LINKS RD. WESTWARD HO!  
BIDEFORD, DEVON. Phone Bideford 4548

ALL TRAINS AND COACHES  
MET BY APPOINTMENT.  
DISTANCE NO OBJECT

## TIFFEN'S TAXI SERVICE

Phone Bideford 4487

G. C. TIFFEN,  
"Sunnyside," Alpha Place, Appledore, North Devon.

## CHICO'S of NORTHAM

LUNCHES SERVED 12.30 to 2 p.m. 2 course from 4/6d.  
SNACKS 9 a.m. until 9 p.m.

DINNERS BY RESERVATION

A Good Selection of Most High Class Confectionery  
always available

Telephone : Bideford 4793

## HOLIDAY BUNGALOWS

WESTWARD HO ! DEVON. CLOSE SEA

4-6 berth, 2 bedrooms, lounge, kitchen, bathroom and  
W.C. (h. and c.), T.V.

Special terms May and September. Ideal children.

Write : WESTWARD HOLIDAY SERVICE, Barnstaple  
Street, Winkleigh, Devon

## KIPLING GUEST HOUSE

WESTWARD HO !

*Finest unrestricted marine views in the district*

Three Minutes from Golden Sands

PERSONAL SUPERVISION GARAGE

BED AND BREAKFAST AND EVENING MEAL

SEPARATE TABLES For Brochure write Proprietor

## EDGEHILL Holiday Flatlets and Chalets

134, BAY VIEW ROAD,  
BUCKLEIGH

### Westward Ho !

Fully equipped.  
H. & C. Own meters  
Laundry facilities.  
Real beds with interior  
spring mattresses.  
Gas fires.  
Shaving points in all rooms.  
Free Parking.  
5 minutes Sea and Shops.  
Children welcomed.  
Ideal position.  
Open all the year.  
Write for brochure.  
Tel. : Bideford 4798.



A VIEW FROM THE GARDEN

## Seafield House

*Westward Ho!*

### The Ideal Holiday House

Overlooking the Sea with Private Steps to Beach. Eleven Bedrooms nearly all overlooking Sea. Central for well-known Beauty Spots.

*Children Welcomed*

*Good Food and Accommodation*

Moderate Charges

Telephone : Bideford 4568

Proprietress : Mrs. L. WARE

*For carefree holidays away from the "hurly-burly" with plenty of golf, fishing, boating, etc., book up with . . .*

## PRINCE OF WALES HOTEL

(Fronting the Estuary)

### APPLEDORE

- ★ Commanding delightful views, fully licensed.
- ★ B. and B. (with evening meals as desired). Reliable cooking. Interior spring mattresses, etc. Private residents' lounge and public bars. Terms moderate.

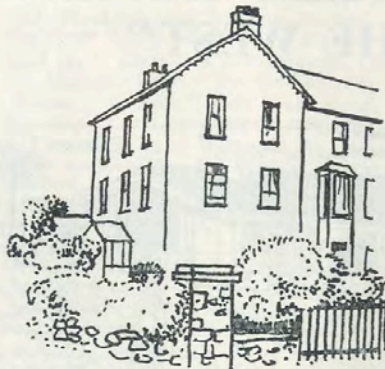
*Write to resident proprietors, Mr. & Mrs. Kevin Conway  
(Phone Bideford 4335)*

## EASTBOURNE LODGE

WESTWARD  
HO!  
N. DEVON

HOLIDAY  
FLATS &  
FLATLETS  
under resident  
care.

Special terms  
early and late  
from £5



Close to the magnificent stretch of sandy beach, golf, riding, bathing, surfing. S.A.E. for brochure, DOCHERTY, 2, Thames Bank, Riverside Road, Staines, Middlesex. Phone Staines 55992.

### HAPPY, HEALTHY HOLIDAYS

within easy distance of beach

at

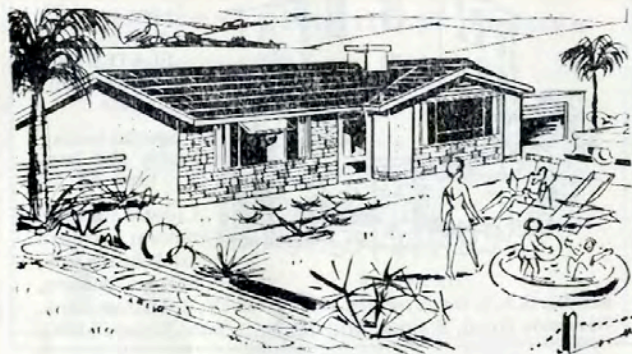
## TORVILLE CAMP

Beach Road, Westward Ho!

Send S.A.E. for full details of Chalets and Caravans available to :—

R. P. BAIN, c/o above address,  
Tel. Bideford 4216

## "A DREAM HOME IN THE WEST"



### RICHMOND PARK

NORTHAM, N. DEVON

## LUXURY BUNGALOWS

on a gently sloping site overlooking the sea and golf links and close to unspoiled Village with Church, Shops, Post Office and through bus service to Bideford, Barnstaple and Ilfracombe

2 bedroom type with garage—from £3,575

3 bedroom type with garage—from £3,925

Prices include Freehold, main services. No road charges.

### IDEAL FOR RETIREMENT

Plans and full particulars from the Selling Agents:—

**KIVELL & SONS, 4 Bridgeland Street, Bideford**

**FOSTER FOX & SONS, 22 Cathedral Yard, Exeter**

Telephone Bideford 2146 for an appointment

## LIST OF APARTMENTS AND CARAVANS, ETC.

### NORTHAM, WESTWARD HO ! and APPLEDORE

Bed and Breakfast and Evening Dinner.—Mrs. Day, "Sunnyside," Appledore Road, Northam, N. Devon.

Westward Ho ! Clean, sea level caravans, close sands, shops, all amenities. Moderate terms.—Yeovale Caravans, Bideford.

Mrs. Davies, "Belmont," Golf Links Road, Westward Ho ! B. & B., Evg. meal, ½ min. sea, homely, mod. Bungalow.

4-berth Caravan to let at Westward Ho ! on sea front. Mains, services camp shop.—Mrs. E. Bardsley, Deanhart, Meadowville Road, Bideford.

2, Meeting Street, Appledore. Good food and comfortable beds. Children welcomed.—Mrs. C. A. Rees.

4-berth Caravan to let at Torville Camp, Westward Ho !—Crawford, 71, Hessel Road, Ealing, London, W.13 (Tel. EAL 7333).

Westward Ho ! Modern 4-berth Caravans. Excellent condition. Personal supervision. Cleanliness guaranteed. Good site with all amenities. Near sea. S.A.E. Jewell, "Nicosia," Westward Ho !

Comfortable accommodation, Board Res., B. & B. 1 minute sea. Mrs. Crawford, 4, Westbourne Terrace, Westward Ho ! Tel. Bideford 4679.

XVI Century Farmhouse, peaceful and delightful surroundings, 1 mile Westward Ho ! and Bideford, offers Bed and Breakfast. Good food and comfortable beds. Reasonable terms. Car space.—Mrs. M. Squire, Fordlands Farm, Lenwood Road, Northam, Bideford, N. Devon. Tel. Bideford 2276.

Westward Ho ! 4 and 7 berth modern caravans. Excellent site, nr. sea. Every amenity. Licensed Club.—W. Smith, "Harwyn," Torville Camp, Westward Ho !

4-Berth Caravans to let at Westward Ho ! Well equipped, good site, club, shop, etc.—Mrs. Shutt, Sunnyside, Kingsley Road, Bideford.

Appledore. Holiday flat, wide sea views, accommodates 3 or 4.—Groves, "Garth," Appledore..

Donnington Guest House, 47, Atlantic Way, Westward Ho ! Phone Bideford 4765. B and B., H. and C. all bedrooms, garage, T.V. Personal supervision.—F. J. and E. K. Sawle.

Self-contained spacious, furnished Holiday Flat, sleep 6. All mod. cons. incl. elec. cooker. Hot water included. 100 yards sea. Central, close shops, buses, etc.—Laws, Newsagent, Westward Ho !

Westward Ho ! Holiday Flat. Sleep up to 6. Full details Jaggard, 7, Nelson Terrace.

4-berth Caravan. Fully equipped, end kitchen.—Ponsford, 39, Wellington Road, London, W.5. Eal. 5994.

Westward Ho ! Flats, sleep 3-9. ½ min. sea, shopping area.—Mrs. Salmons, 5, Nelson Terrace.

Westward Ho ! Bed and breakfast, children and pets welcome. Car space. Moore, "Ocean Swell," 95, Atlantic Way, Westward Ho !

Mrs. B. M. Lee, "Syringa," Silford Cross, Northam, N. Devon. Tel. Bideford 4530. Bed and Breakfast (evening meal optional). Homely modern bungalow in quiet surroundings. Good food and comfortable beds. Car space. Reasonable terms.

LIST OF APARTMENTS AND CARAVANS, ETC.—Contd.

Self-contained Furnished Flat, on sea front, Westward Ho !—Apply T. H. Trickey, Seagull Cafe, Westward Ho !

Westward Ho ! Sea Front. Small 4-berth caravan.—Apply Clarke, Ivy Cottage, Weare Giffard, Bideford, N. Devon.

Westward Ho ! 4-berth Caravan. Ideal end site. 20 yards beach, with view across Bay.—S.A.E. 141, Bridgwater Road, Taunton, Somerset.

SURROUNDING DISTRICT

Bed and Breakfast. Free access during day. Central residential area. Recommended.—Mrs. E. M. Lugg, Mandalay, 30, Northview Avenue, Bideford.

Mrs. P. Trewin, "Trehaven," 5, Moreton Park, Abbotsham Rd., Bideford, N. Devon, Tel. Bideford 2256. Attractive bungalow accommodation. B. & B. and evening meal. One double available. H. & C. Garage or car space. Central for all local beaches.

Mrs. J. Garnsey, 32, Northview Ave., Bideford. Bed and Breakfast, Evening Meal if required. Quiet area, near river, shops, park. 1½ miles Westward Ho ! Personal attention. Mod. terms. Tel. Bideford 3352.

NURSERYLAND

14, BRIDGELAND STREET  
BIDEFORD. Tel. 3262

★ COTS, PRAMS,  
PUSH-CHAIRS FOR HIRE

AGNELLA GUEST HOUSE

WESTWARD HO !

*A.A. and R.A.C. Approved and Listed*

For happier holidays at reasonable cost. Close sea and sands. Lovely view. H.C. all rooms. Children welcomed. Bid. 4499.

SEASTONE HOUSE

WESTWARD HO !

Superior type flats to let in glorious position, overlooking sea. Near bus route and shops. All main services. Write Mr. & Mrs. Noonan (resident proprietors). Tel. Bideford 4499.

QUAY GIFT CENTRE  
& VARIETY STORE

TELEPHONE: BIDEFORD 2033

*BIDEFORD has a unique past . . .  
Its future looks quite pleasant,  
And this is the shop where you're bound to stop  
For that unique, pleasant, PRESENT.*

DEVON and CORNISH  
COTTAGE POTTERY  
DEVONSTONE CRAFTS  
CONTINENTAL and Far  
Eastern Imported Novelties  
DEVON VIOLETS  
PERFUME  
PIXIES, GNOMES and  
HOBGOBLINS  
JEWELLERY and  
BRASSWARE  
LOCAL ARTS & CRAFTS  
SEASIDE NEEDS  
VIEW CARDS

And a host of Novelties  
you will be tempted to buy



Agents for :—

TRIANG, DINKY,  
KEIL KRAFT,  
PEDIGREE and all  
the Better Toys.

★ ★

*A friendly Shop where  
people walk around and  
serve themselves.*



COME & WISH AT THE ANCIENT PIXIE WELL